

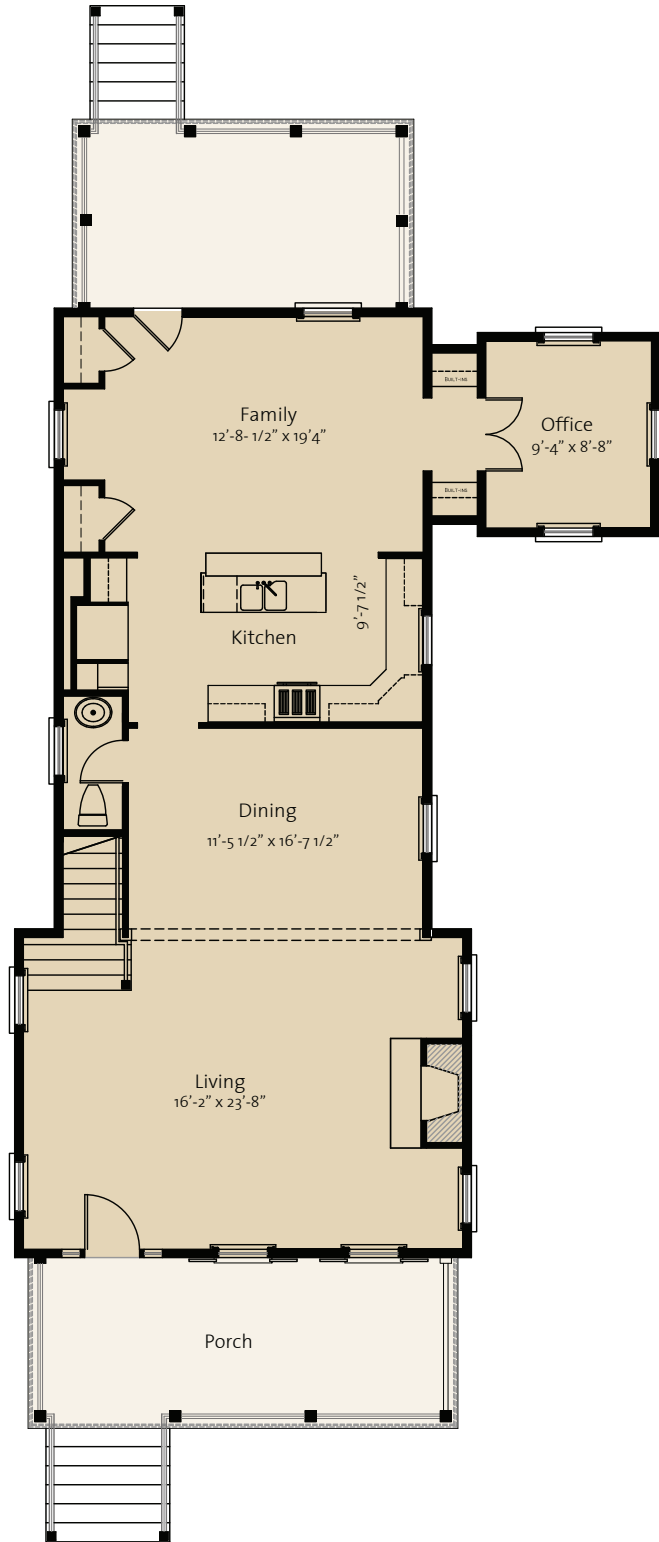
1676 Paradise Lake Drive



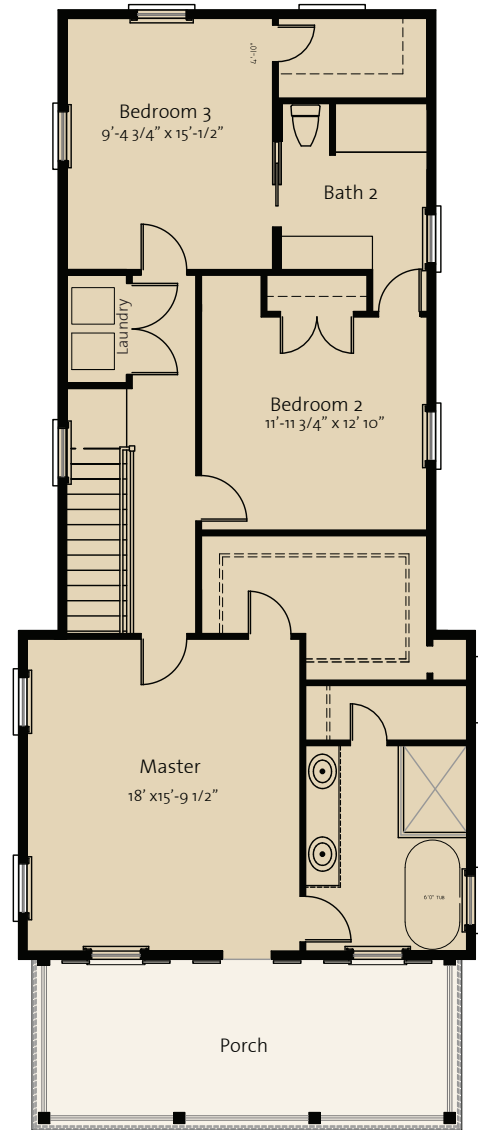
SAUSSY BURBANK
BEAUTIFUL - TIMELESS - CRAFTSMANSHIP

3 Bedrooms
2.5 Bath
1st Floor: 1,289 sq. ft.
2nd Floor: 1,152 sq. ft.
Total Heated: 2,441 sq. ft.

1676 Paradise Lake Drive



First Floor Plan



Second Floor Plan