

1680 Paradise Lake Drive



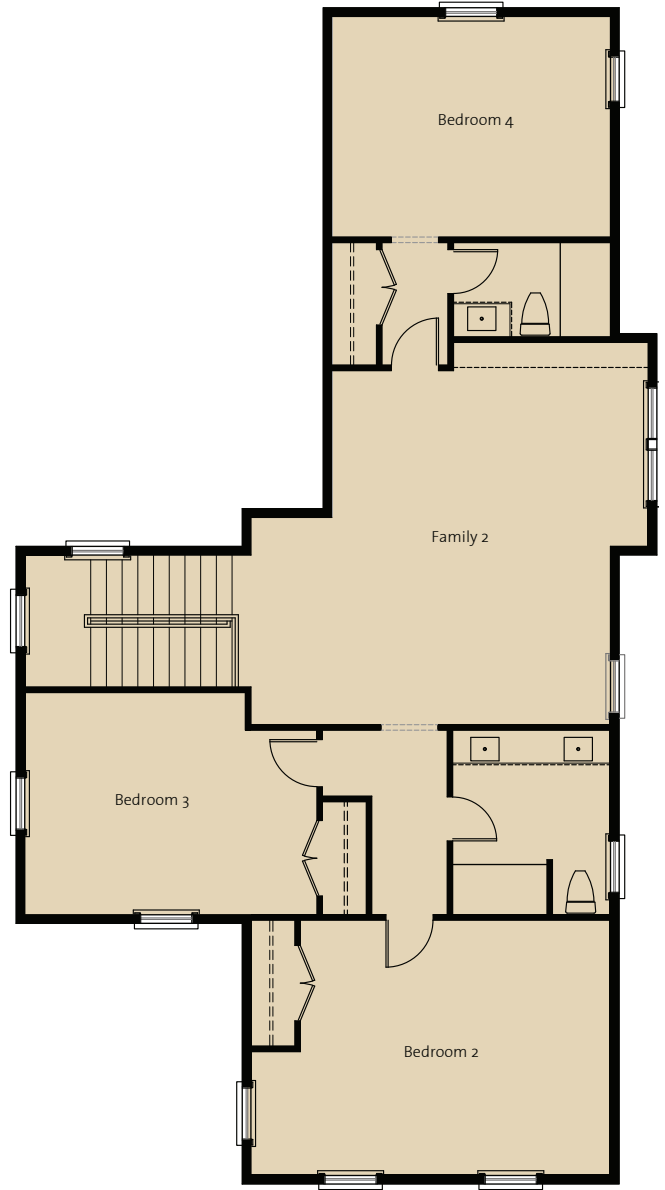
**SAUSSY BURBANK**  
BEAUTIFUL - TIMELESS - CRAFTSMANSHIP

4 Bedrooms  
3.5 Bath  
1st Floor: 1,669 sq. ft.  
2nd Floor: 1,398 sq. ft.  
Total Heated: 3,067 sq. ft.

# 1680 Paradise Lake Drive



First Floor Plan



Second Floor Plan

