

HARTLEY 2395M

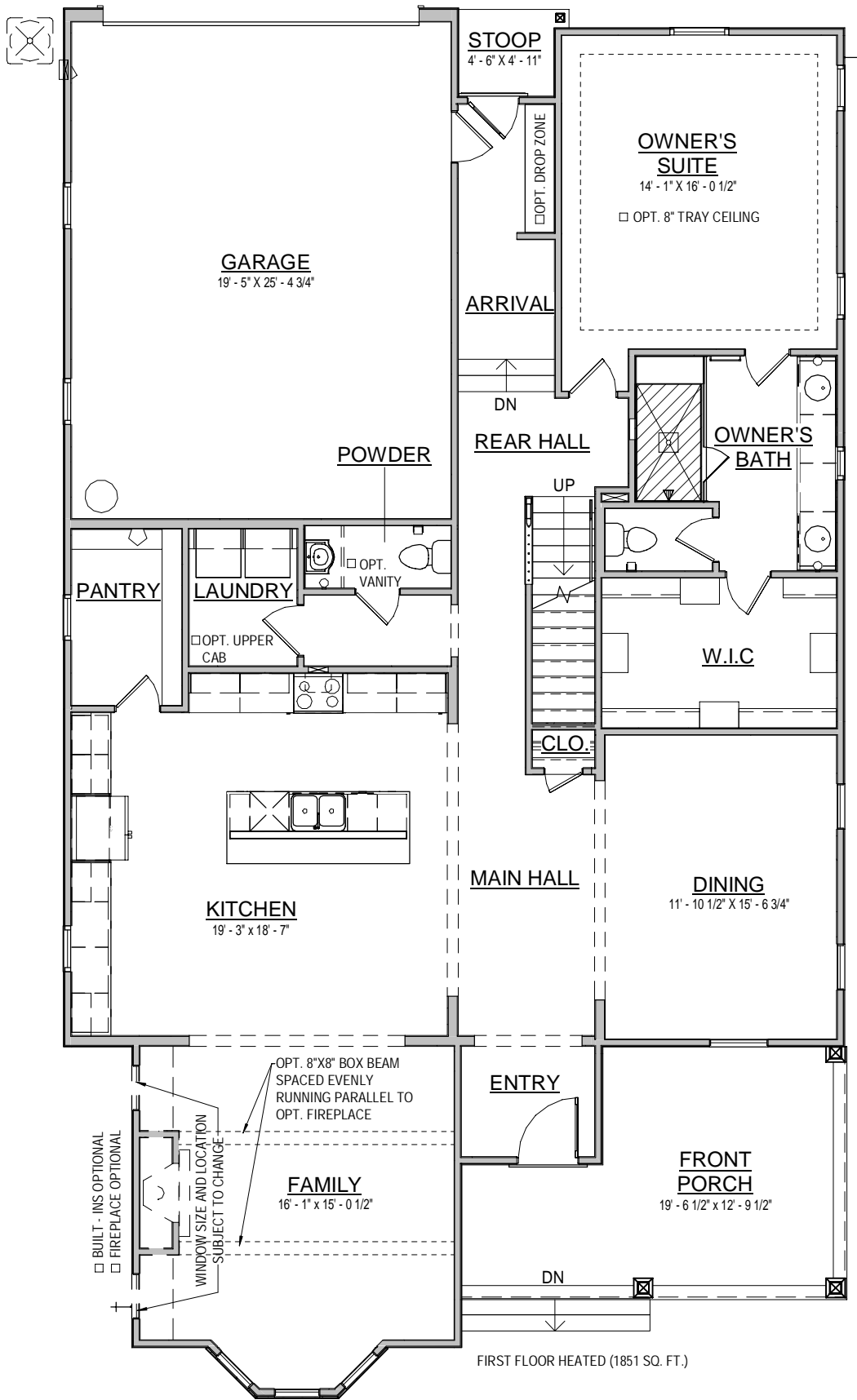


HARTLEY 2395M - Shown with color palette 12

Bedrooms	3/4
Bathrooms	2.5/3.5
First Floor	1879 sq. ft.
Second Floor	1110 sq. ft.
Total Heated	2989 sq. ft.

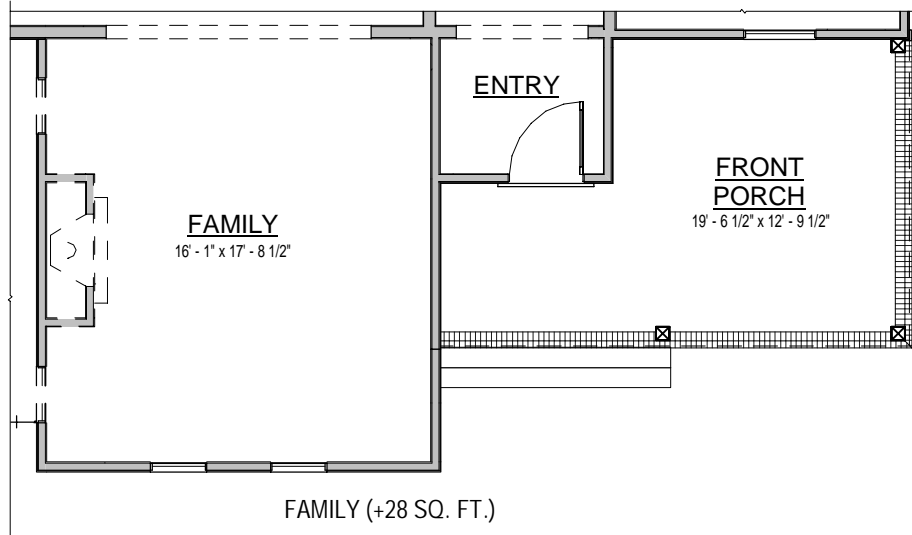
©2025. Saussy Burbank, LLC "Saussy Burbank" is a service mark of Saussy Burbank, LLC. Prices, plans, designs, architectural renderings, uses, dimensions, specifications, materials, availability, improvements and amenities depicted or described herein are subject to change or cancellation (in whole or in part) without notice. Illustrations may include artists' depictions and differ from final improvements. Equal housing opportunity.

May 1, 2025

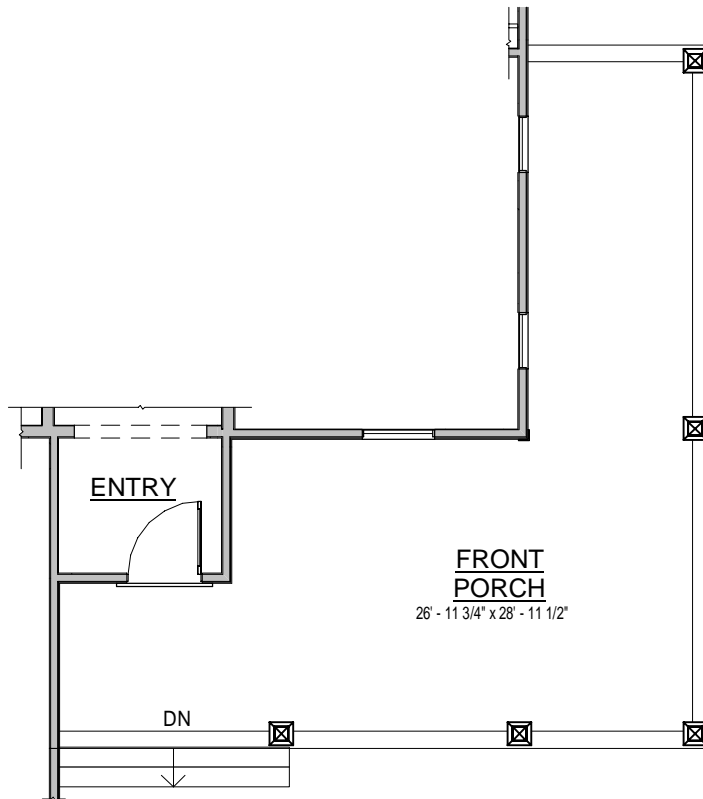


FIRST FLOOR PLAN L



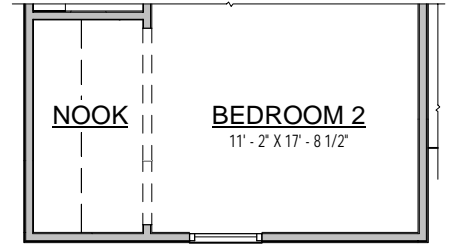


M ELEVATION



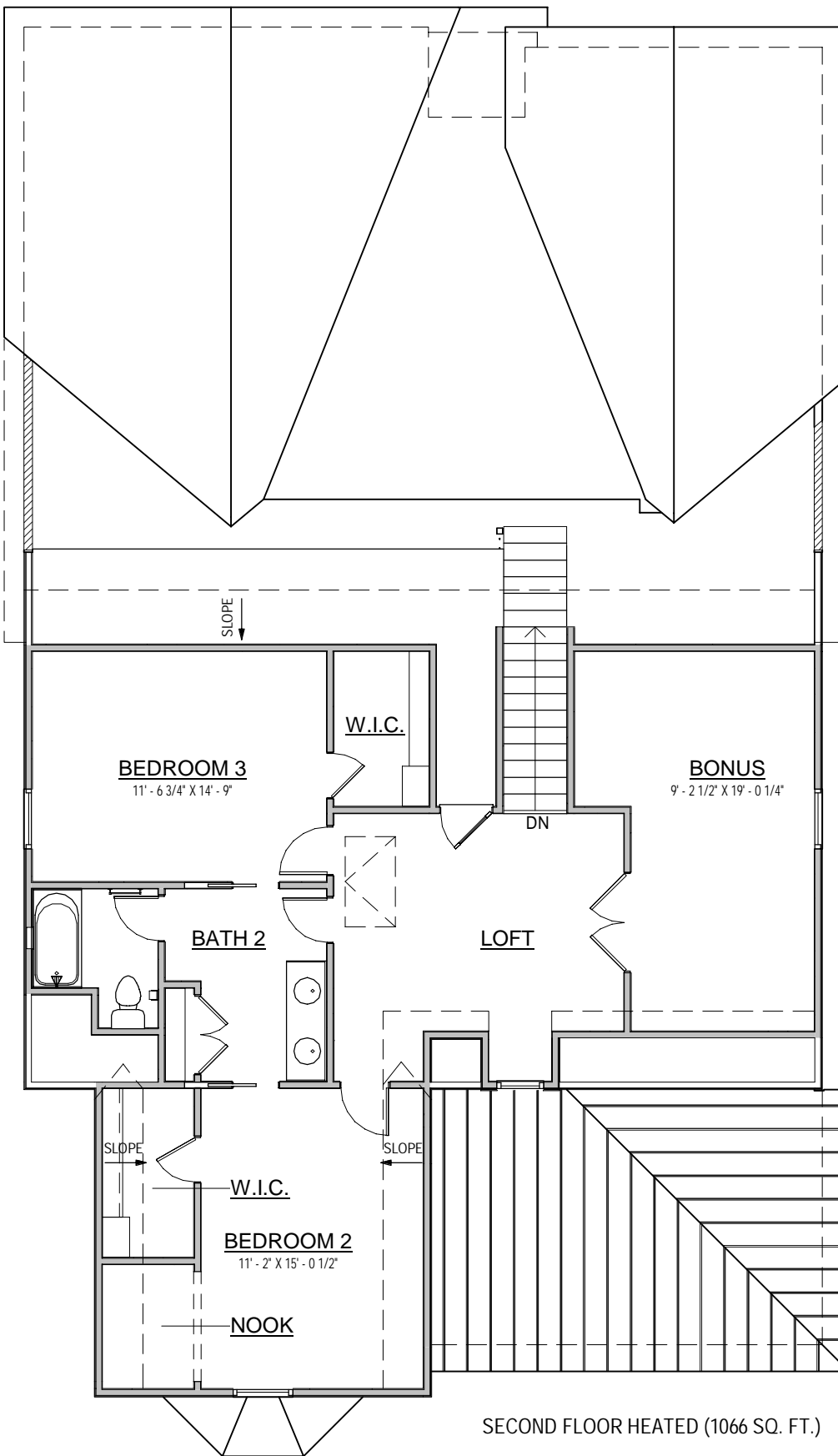
EXTENDED PORCH OPT.





BEDROOM 2 & NOOK (+44 SQ. FT.)

M ELEVATION



SECOND FLOOR PLAN





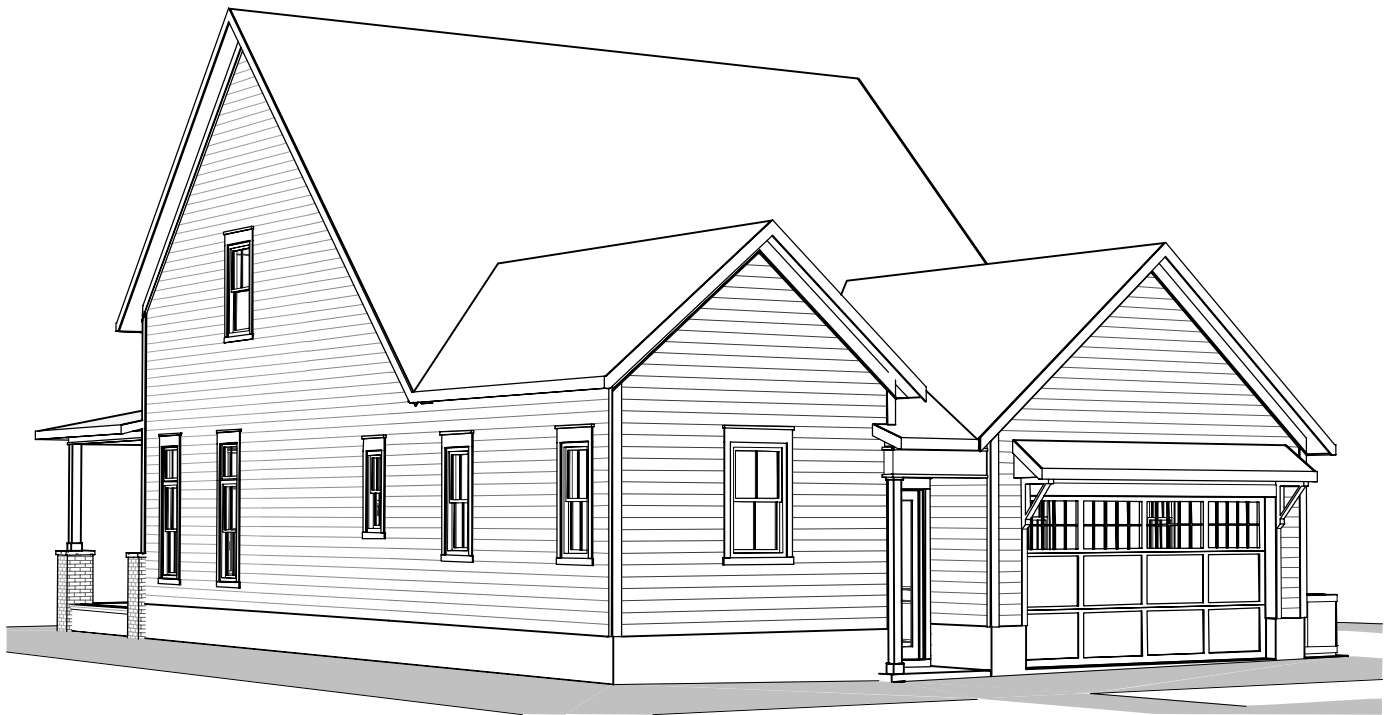
FRONT ELEVATION M



REAR ELEVATION M



FRONT ELEVATION M



REAR ELEVATION M



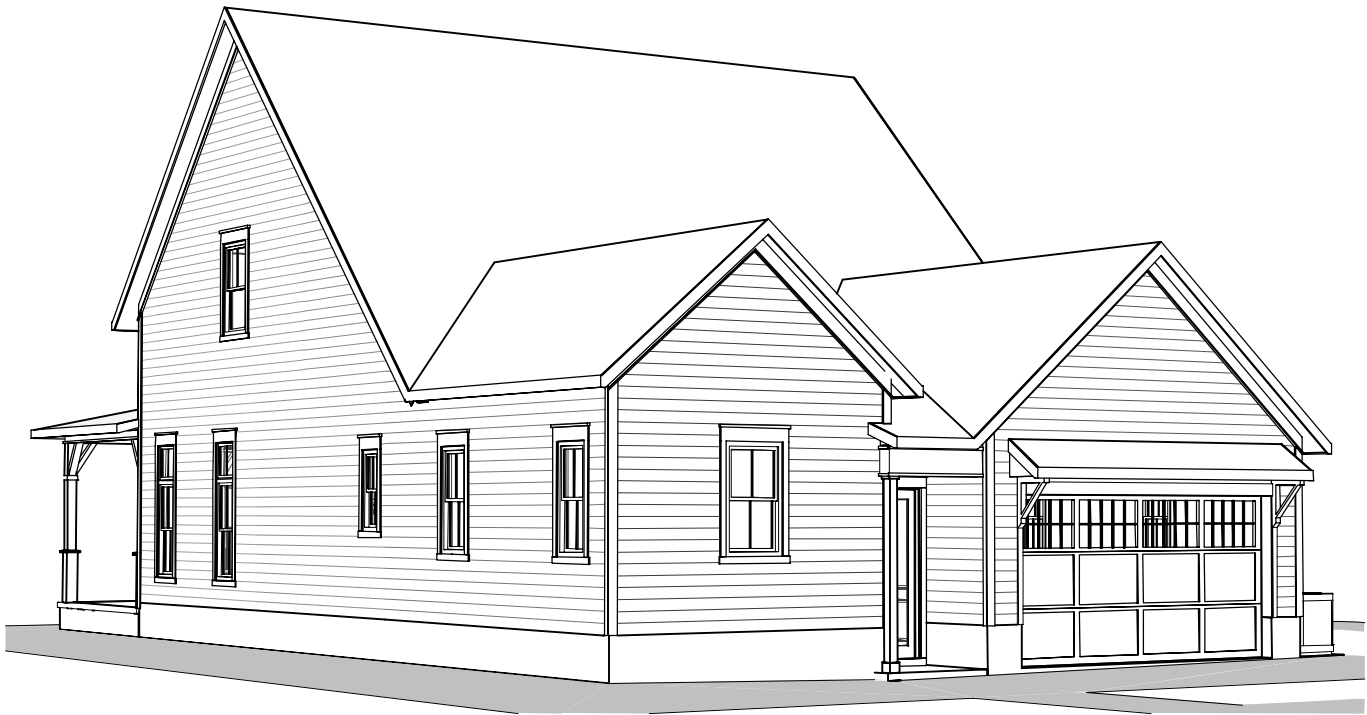
FRONT ELEVATION L



REAR ELEVATION L



FRONT ELEVATION L



REAR ELEVATION L



RIGHT SIDE ELEVATION M



LEFT SIDE ELEVATION M



RIGHT SIDE ELEVATION L



LEFT SIDE ELEVATION L



EXT PORCH L



EXT PORCH M



FRONT ELEVATION EXTENDED PORCH L



RIGHT SIDE ELEVATION EXTENDED PORCH L



FRONT ELEVATION EXTENDED PORCH M



RIGHT SIDE ELEVATION EXTENDED PORCH M