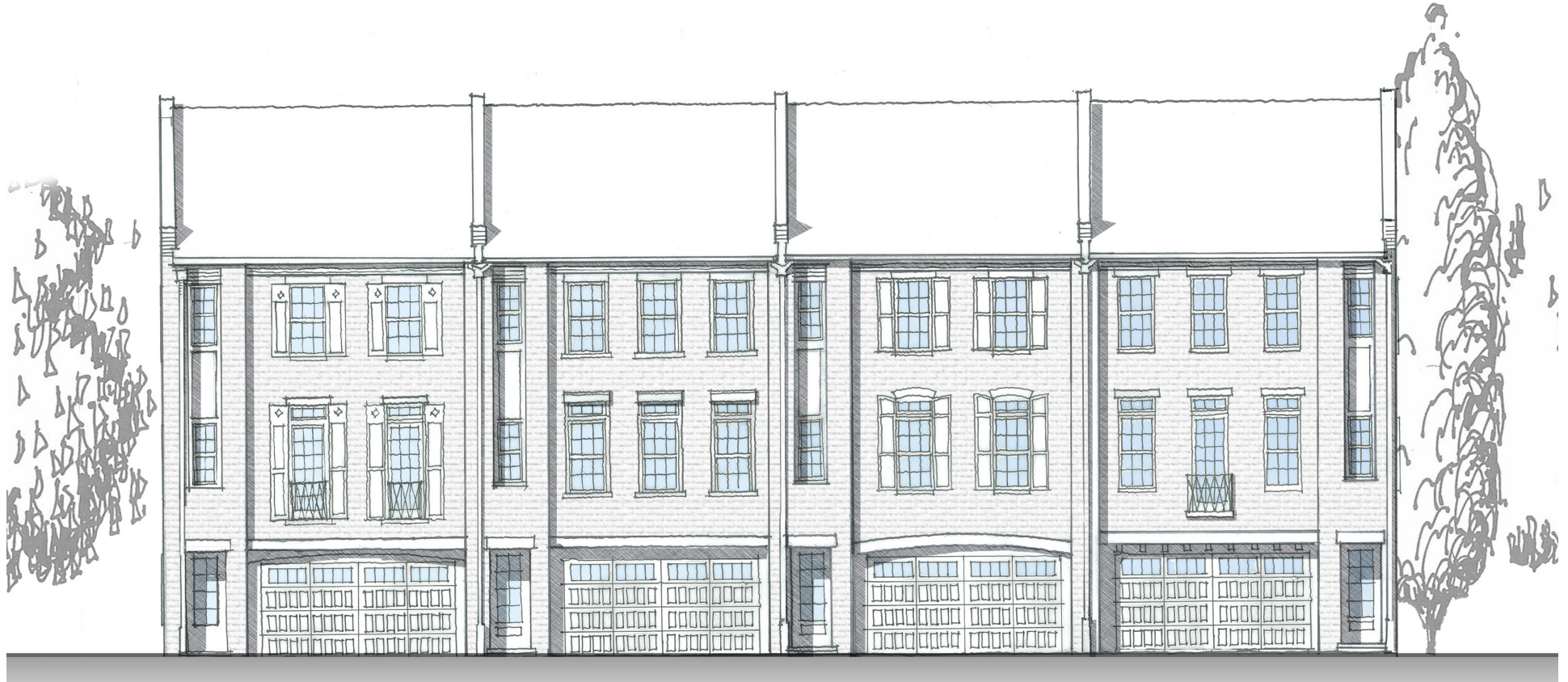


# HILLSIDE TOWNS - 4 UNIT



	Type A	Type B	Type C	Type D
<b>Bedrooms</b>	3	3	3	3
<b>Bathrooms</b>	3.5	3.5	3.5	3.5
<b>Street Level</b>	643 sq. ft.	667 sq. ft.	667 sq. ft.	643 sq. ft.
<b>Main Level</b>	1084 sq. ft.	1103 sq. ft.	1103 sq. ft.	1084 sq. ft.
<b>Upper Level</b>	1090 sq. ft.	1115 sq. ft.	1115 sq. ft.	1090 sq. ft.
<b>Total Heated</b>	2817 sq. ft.	2885 sq. ft.	2885 sq. ft.	2817 sq. ft.



