

LOT 1495  
708 RUMBLING LEAF LANE

 SAUSSY BURBANK

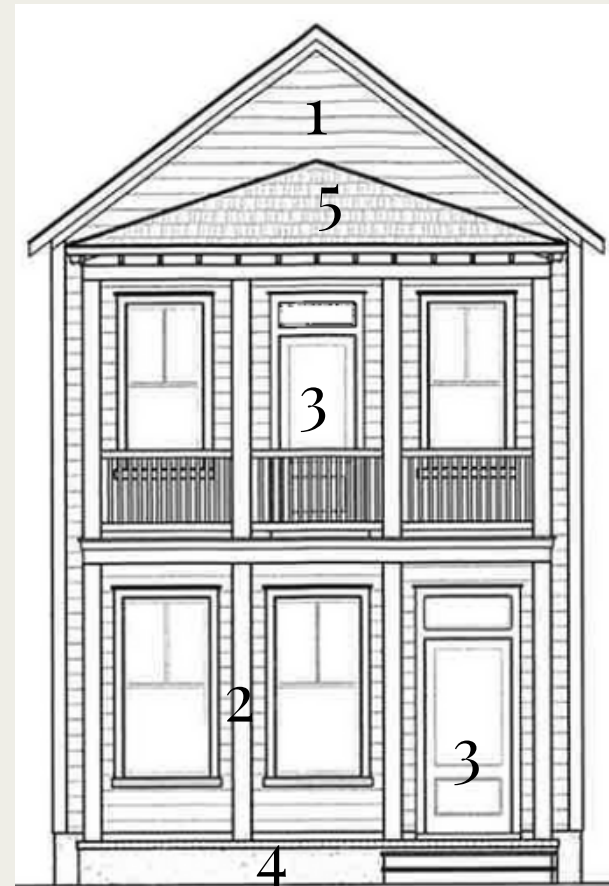
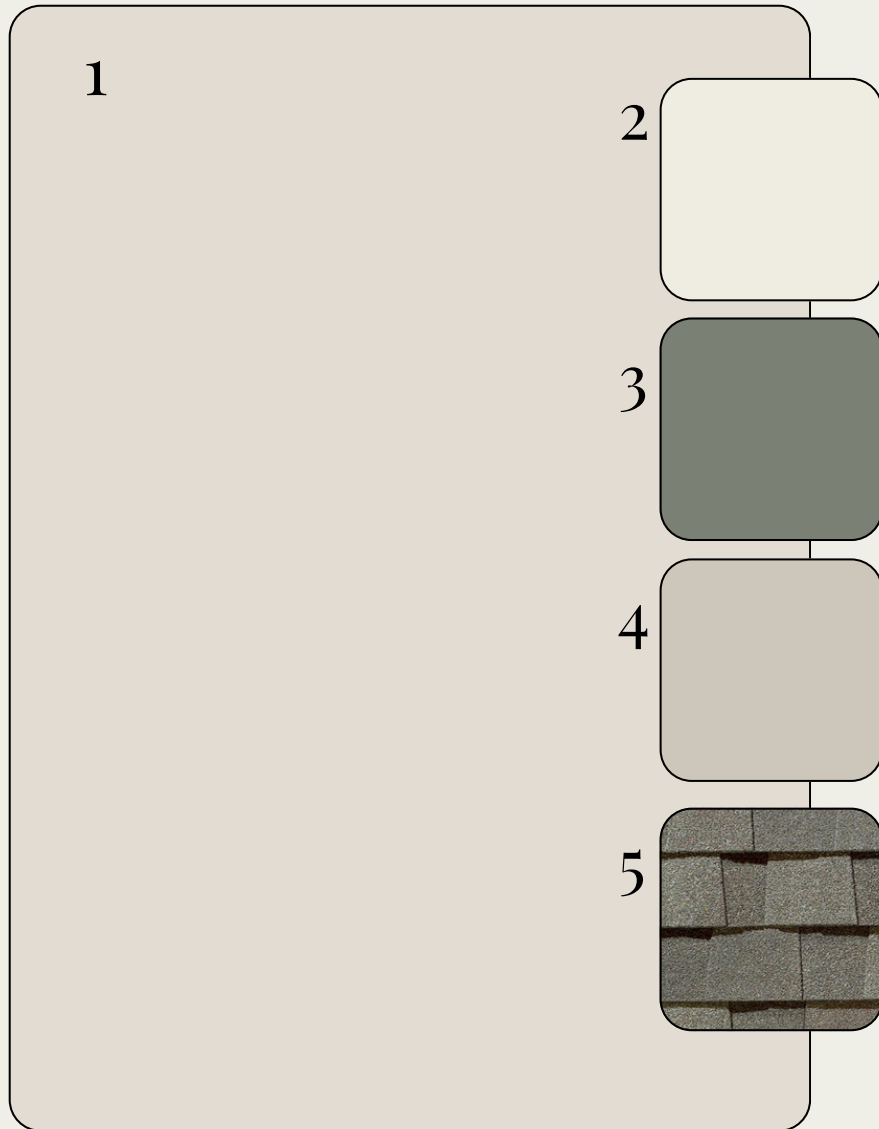


\*OPTIONAL UPGRADES MAY BE SHOWN ON ARTIST'S RENDERING. SEE AGENT FOR DETAILS

BARTON-P

# EXTERIOR SELECTIONS

1. SIDING - EVERYDAY WHITE (SW6077)
2. TRIM- GREEK VILLA (SW7551)
3. FRONT DOORS - RETREAT (SW6207)
4. FOUNDATION - WORLDLY GREY (SW7043)
5. ROOF- WEATHERED WOOD



# EXTERIOR HARDWARE & LIGHTING

1



2



3



1. FRONT DOOR HARDWARE - SUTTON - SATIN NICKEL
2. INTERIOR DOOR HARDWARE - STRATUS KNOB - SATIN NICKEL
3. REAR DOOR KEYLESS - TOUCH CENTURY - SATIN NICKEL
4. FRONT & REAR PORCHES - VADO 1-LIGHT WALL LANTERN - BLACK
5. GARAGE DOORS - BARN LIGHT LARGE - BLACK

4



5



# INTERIOR SELECTIONS

1

2

1. WALL PAINT- PURE WHITE (SW7005)
2. TRIM PAINT - PURE WHITE (SW7005)
3. FLOORING - LVP -MOHAWK - ARBOR BANKS - HARTLEY (1ST FLOOR LIVING AREAS, LAUNDRY, 2ND FLOOR HALL)
4. CARPET -MOHAWK - LUSTROUS TONES - ISLAND TAUPE (PRIMARY BEDROOM, BED 2 & 3)
5. STAIR STAIN - STAINED TO COORDINATE W/ LVP

3

4

5



# INTERIOR LIGHTING

1



2



3



4



5



1. FAMILY ROOM & PRIMARY BEDROOM - AVILA 54" LED CEILING FAN - SATIN BRASS & WHITE
2. FOYER - ASHER FLUSH MOUNT - WHITE
3. DINING ROOM - SAWYER SMALL CHANDELIER - BURNISHED BRASS
4. CLOSETS - ROUND CEILING MOUNT - WHITE
5. BED 2 & 3 - ERA 44" LED CEILING FAN - WHITE

# KITCHEN

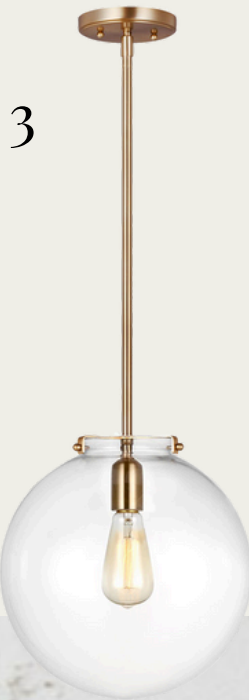
1. FAUCET- DELTA MONROVIA - CHAMPAGNE BRONZE
2. UNDERMOUNT SINK- STAINLESS STEEL
3. PENDANT LIGHTS - KATE 1-LIGHT SPHERES - SATIN BRASS (X2)
4. COUNTERTOPS- QUARTZ - CARRARA BREVE
5. BACKSPLASH - PASSION 3X8 - BLANCO
6. CABINET HARDWARE - ANTIC PULL
7. CABINETS - TIMBERLAKE BARNETT - PAINTED LINEN



1

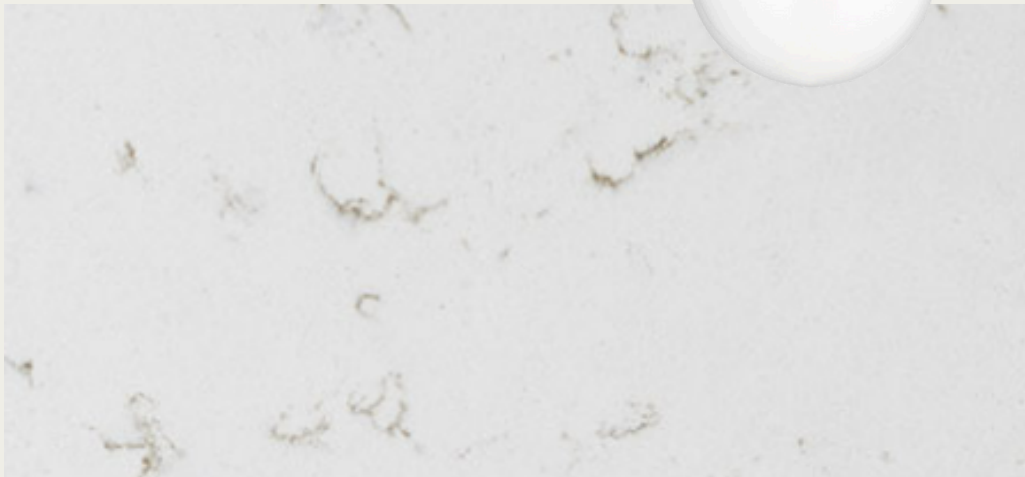


2

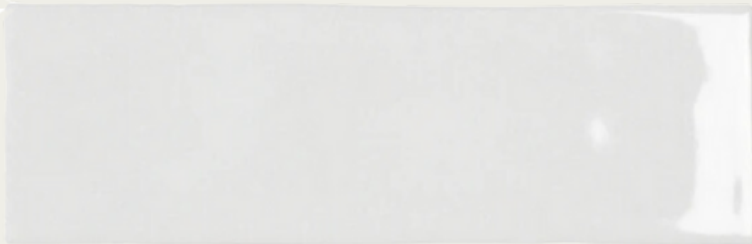


3

4



5



6



7



# APPLIANCES

1

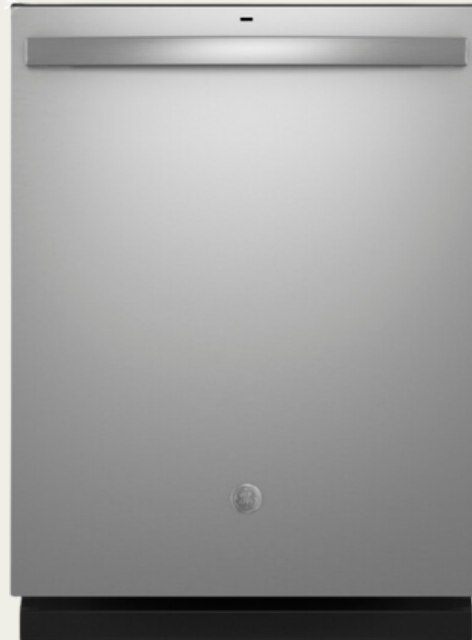


1. MICROWAVE - GE - JVM3162RJSS - STAINLESS STEEL
2. GAS RANGE - GE - GGS500SVSS - STAINLESS STEEL
3. DISHWASHER- GE - GDT635HSRSS - STAINLESS STEEL

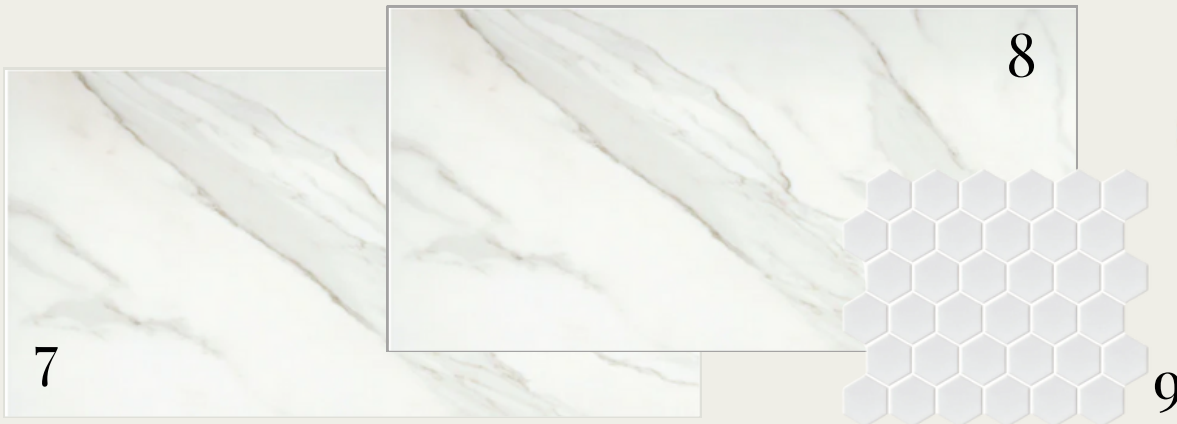
2



3



# PRIMARY BATHROOM



1. FAUCET- DELTA SAYLOR - CHAMPAGNE BRONZE - WIDESPREAD (X2)
2. SINK-RECTANGULAR BASIN (X2)
3. BATHROOM LIGHT FIXTURE - EMILE 2-LIGHT - SATIN BRASS (X2)
4. CABINETS-TIMBERLAKE BARNETT - PAINTED LINEN
5. HARDWARE- ANTIC PULL
6. COUNTERTOPS- QUARTZ - BLANCO MAPLE
7. BATHROOM FLOOR- NOBLEZA 12X24 - LUGO MATTE
8. SHOWER WALLS - NOBLEZA 12X24 - LUGO POLISHED
9. SHOWER FLOORS - SAVVY 2" HEX - WHITE
10. SHOWER FIXTURE - DELTA SAYLOR
11. SHOWER ENCLOSURE - FRAMELESS



# BATHROOM TWO



1



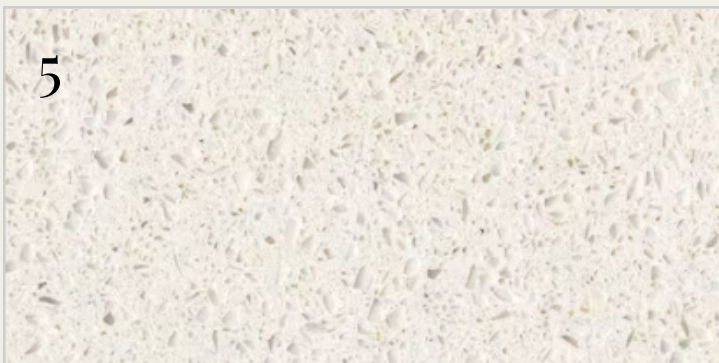
3



2



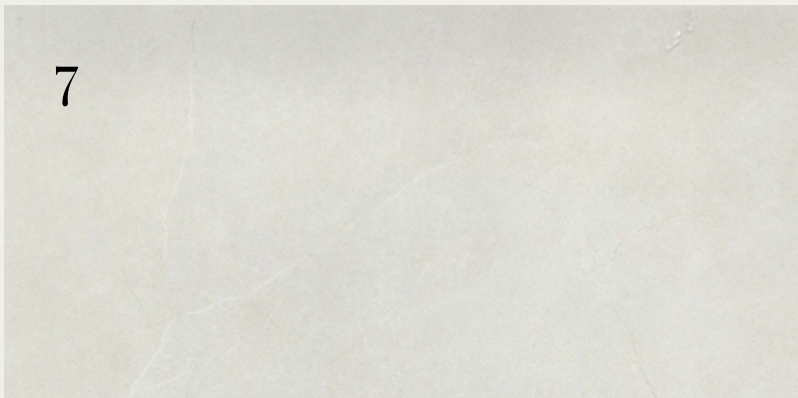
4



5



6



7



8



9



1. FAUCET- DELTA SAYLOR - CENTERSET (X2)
2. SINK-RECTANGULAR BASIN (X2)
3. BATHROOM LIGHTING - EMILE 2-LIGHT (X2)
4. CABINETS - TIMBERLAKE BARNETT - PAINTED LINEN
5. COUNTERTOPS- QUARTZ - BLANCO MAPLE
6. HARDWARE - ANTIC PULL
7. BATHROOM FLOOR - SOLARA 12X24 FIRENZA
8. TUB/SHOWER FIXTURE - DELTA SAYLOR
9. TUB- VIKRELL TUB

# POWDER ROOM

1



2



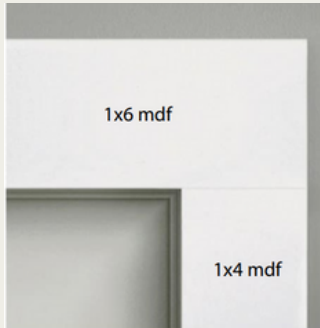
3



1. FAUCET- DELTA SAYLOR - SINGLE
2. BATHROOM LIGHTING - RHETT  
MEDIUM VANITY - SATIN BRASS
3. PEDESTAL SINK - SACRAMENTO -  
WHITE

# TRIMWORK & OTHER SELECTIONS

- BASEBOARDS - OPTIONAL 1X6
- WINDOW CASINGS - OPTIONAL  
1X4 LEGS, 1X6 HEADS W/ SILL
- STAIRS - STAINED OAK TREADS  
W/ PAINTED RISERS
- INTERIOR DOORS - 2 PANEL



- CASED OPENINGS - OPTIONAL  
1X4 LEGS, 1X6 HEADS
- DOOR CASINGS - STANDARD  
1X4 LEGS, 1X6 HEADS



