

LOT 1493  
712 RUMBLING LEAF LN

 SAUSSY BURBANK

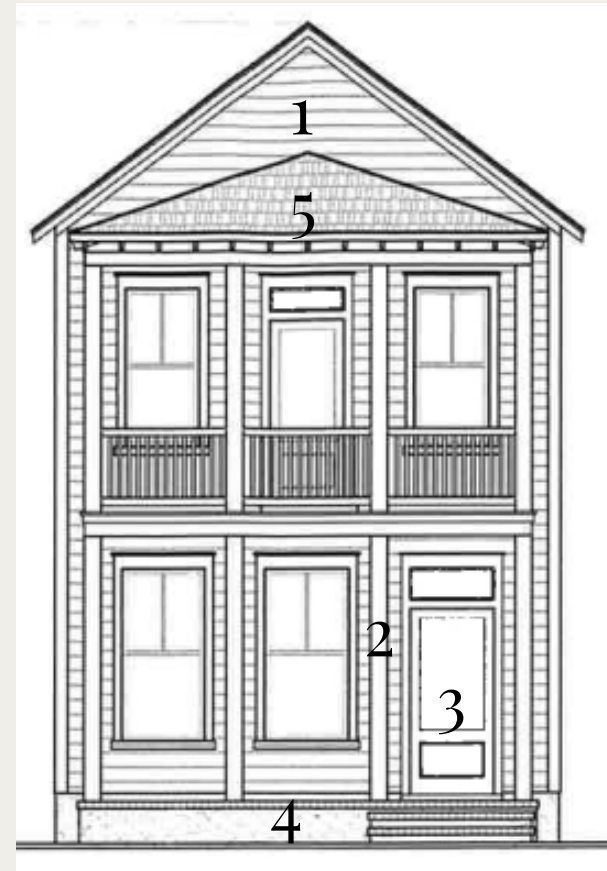
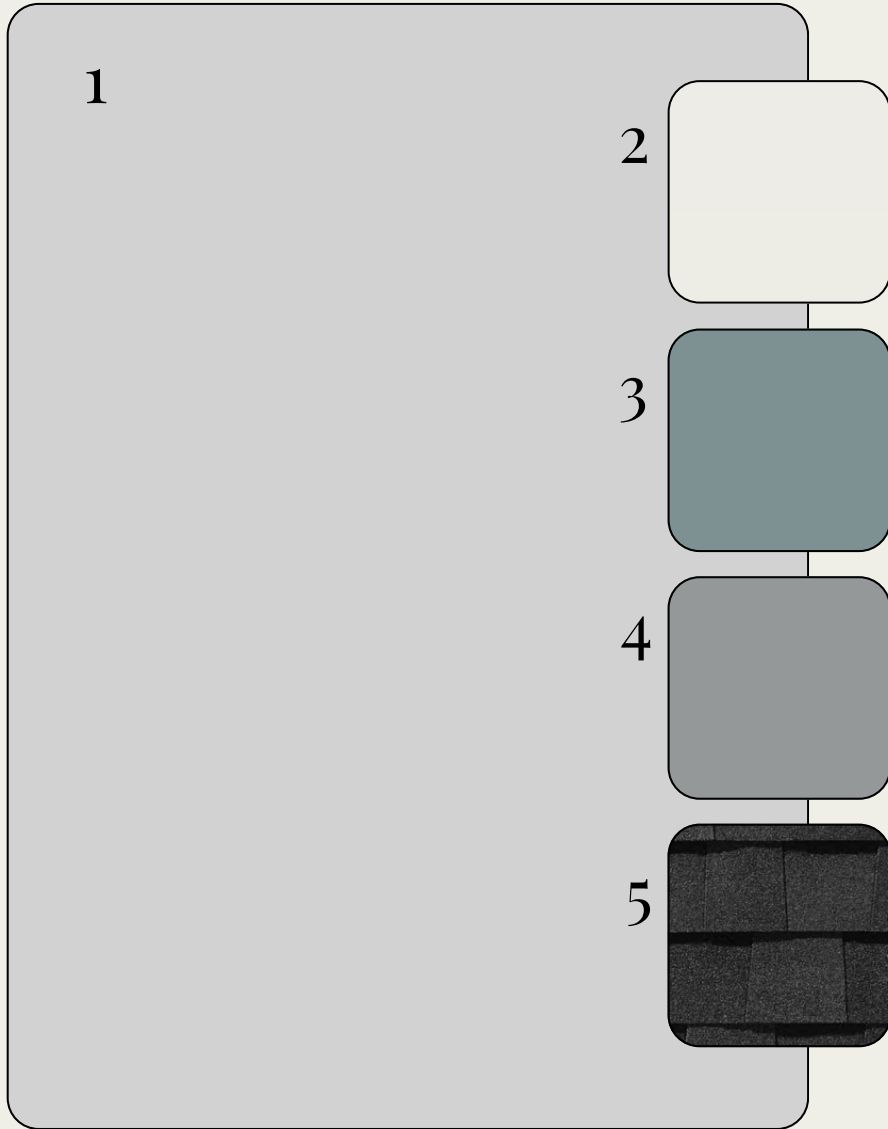


\*OPTIONAL UPGRADES MAY BE SHOWN ON ARTIST'S RENDERING. SEE AGENT FOR DETAILS

GRACE-P

# EXTERIOR SELECTIONS

1. SIDING - REFLECTION (SW7661)
2. TRIM- PURE WHITE (SW7005)
3. FRONT DOORS- MOODY BLUE (SW6221)
4. FOUNDATION - AFRICAN GREY (SW9162)
5. ROOF- MOIRE BLACK



# EXTERIOR HARDWARE & LIGHTING

1



2



3



1. FRONT DOOR HARDWARE - SUTTON - BLACK
2. INTERIOR DOOR HARDWARE - STRATUS KNOB - BLACK
3. REAR DOOR KEYLESS - TOUCH CENTURY - BLACK
4. FRONT & REAR PORCHES - TYBEE MEDIUM WALL LANTERN - BLACK
5. GARAGE DOORS - BARN LIGHT LARGE - BLACK

4



5



# INTERIOR SELECTIONS

1

2

3

4

1. WALL PAINT- PURE WHITE (SW7005)
2. TRIM PAINT - PURE WHITE (SW7005)
3. FLOORING - LVP -MOHAWK - ARBOR BANKS - HARTLEY (1ST FLOOR LIVING AREAS, 2ND FLOOR HALL)
4. CARPET -MOHAWK - LUSTROUS TONES - TWILIGHT (PRIMARY BEDROOM, BED 2 & 3)

# INTERIOR LIGHTING

1. FAMILY ROOM & PRIMARY BED - ERA 52" LED FANS - WHITE
2. BED 2 & 3 - RHETT FLUSH MOUNT - BLACK
3. CLOSETS, FOYER, HALLS - ROUND CEILING MOUNT - WHITE
4. ISLAND LIGHT - MITTE 4-LIGHT ISLAND PENDANT - BLACK

1



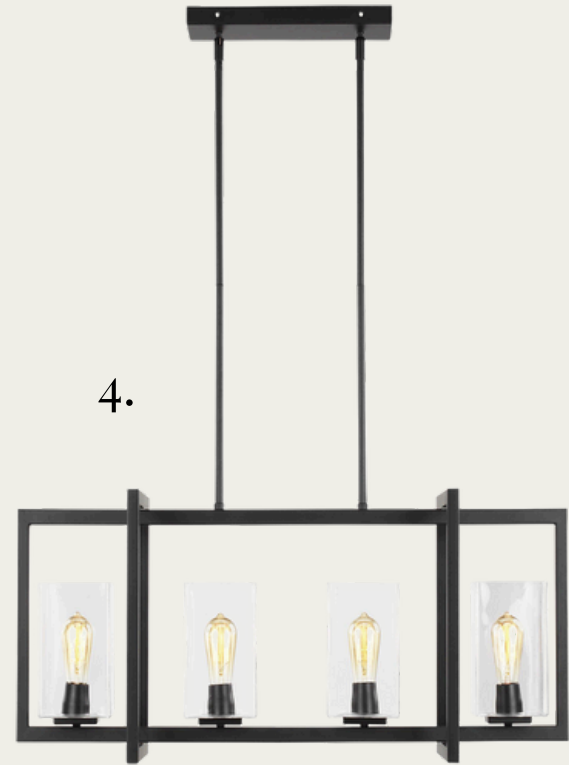
2



3



4.



# KITCHEN



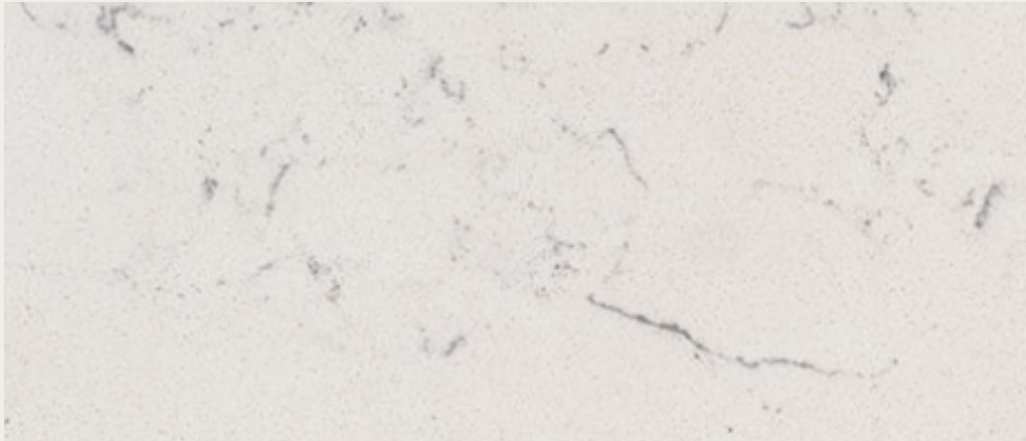
1



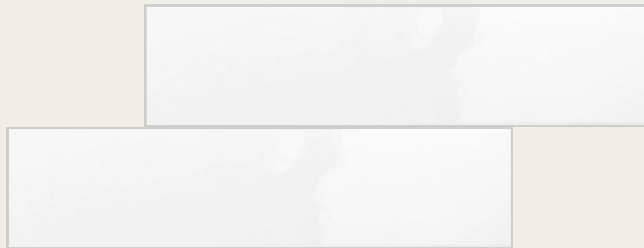
2

1. FAUCET/AIRSWITCH BUTTON - DELTA  
ESSA - MATTE BLACK
2. STAINLESS STEEL UNDERMOUNT SINK
3. COUNTERTOPS- QUARTZ - CARRARA  
MARMI
4. BACKSPLASH - CATCH 3X12 - ICE  
GLOSSY
5. CABINET HARDWARE - TEMPO PULL
6. CABINETS - TIMBERLAKE BARNETT -  
PAINTED LINEN

3



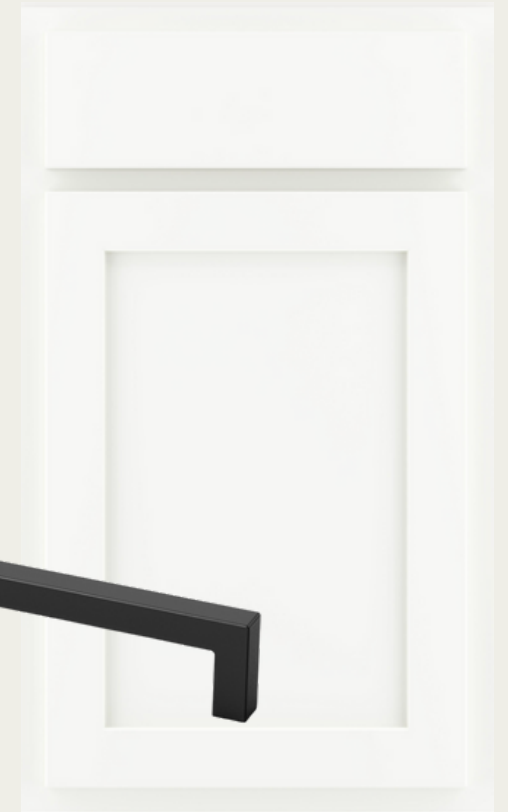
4



5



6



# APPLIANCES

1

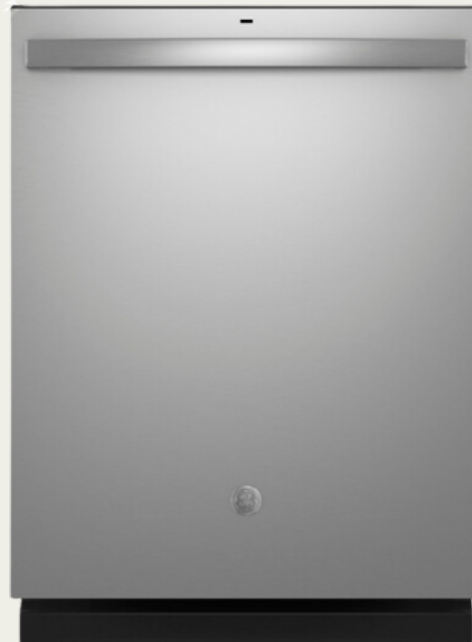


1. MICROWAVE - GE - JVM3162RJSS - STAINLESS STEEL
2. GAS RANGE - GE - GGS500SVSS - STAINLESS STEEL
3. DISHWASHER- GE - GDT635HSRSS - STAINLESS STEEL

2



3



# PRIMARY BATHROOM



1

2



3



4

6

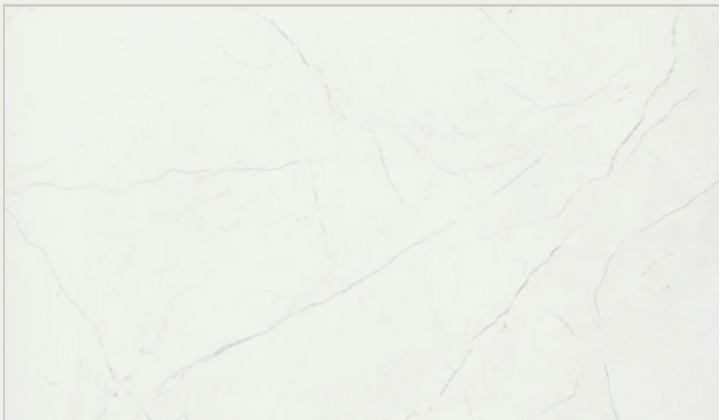


5

1. FAUCET- DELTA SAYLOR - MATTE BLACK - WIDESPREAD (X2)
2. SINK-RECTANGULAR BASIN (X2)
3. BATHROOM LIGHT FIXTURE - FULLTON 2-LIGHT - BLACK (X2)
4. CABINETS-TIMBERLAKE BARNETT - PAINTED STONE
5. COUNTERTOPS- QUARTZ - BLANCO MAPLE
6. HARDWARE - TEMPO PULL
7. BATHROOM FLOOR- SOLARA 12X24 - CABRIO
8. SHOWER WALLS - CATCH 3X12 - ICE GLOSSY
9. SHOWER FIXTURE - DELTA SAYLOR
10. SHOWER ENCLOSURE - FRAMELESS



9



7

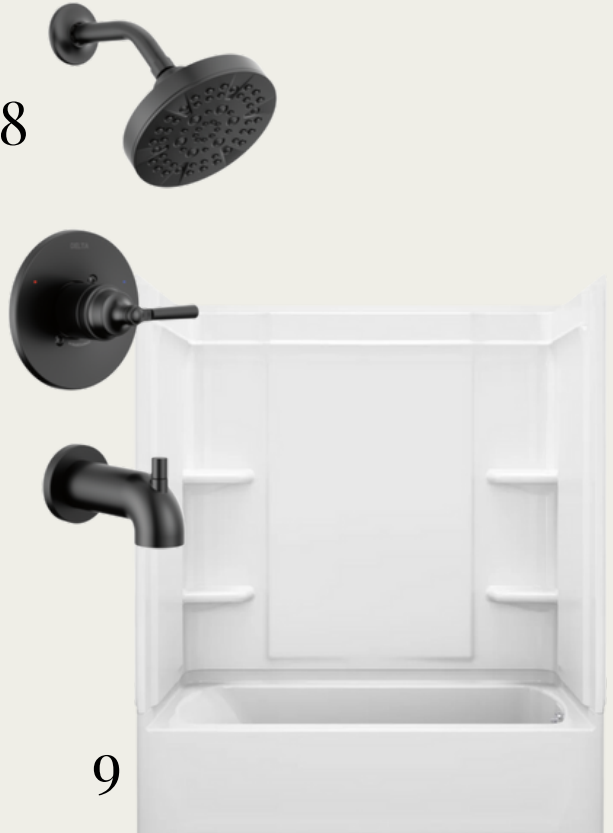
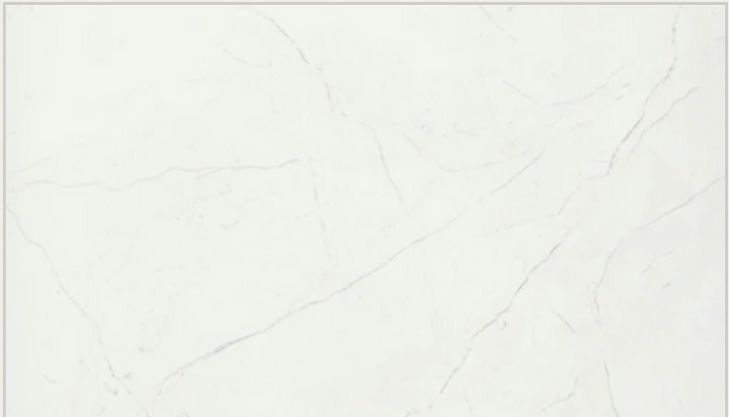
8



10



# BATHROOM TWO



- 1. FAUCET- DELTA SAYLOR - CENTERSET (X1)
- 2. SINK-RECTANGULAR BASIN (X1)
- 3. BATHROOM LIGHTING - FULLTON 2-LIGHT (X1)
- 4. CABINETS - TIMBERLAKE BARNETT - PAINTED STONE
- 5. COUNTERTOPS- QUARTZ - BLANCO MAPLE
- 6. HARDWARE - ANTIC PULL
- 7. BATHROOM FLOOR - SOLARA 12X24 - CABRIO
- 8. TUB/SHOWER FIXTURE - DELTA SAYLOR
- 9. TUB- VIKRELL TUB

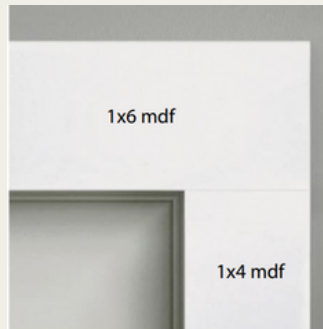
# POWDER ROOM



1. FAUCET- DELTA SAYLOR - CENTERSET
2. BATHROOM LIGHTING - FULLTON 2-LIGHT (X1)
3. PEDESTAL SINK - SACRAMENTO - WHITE

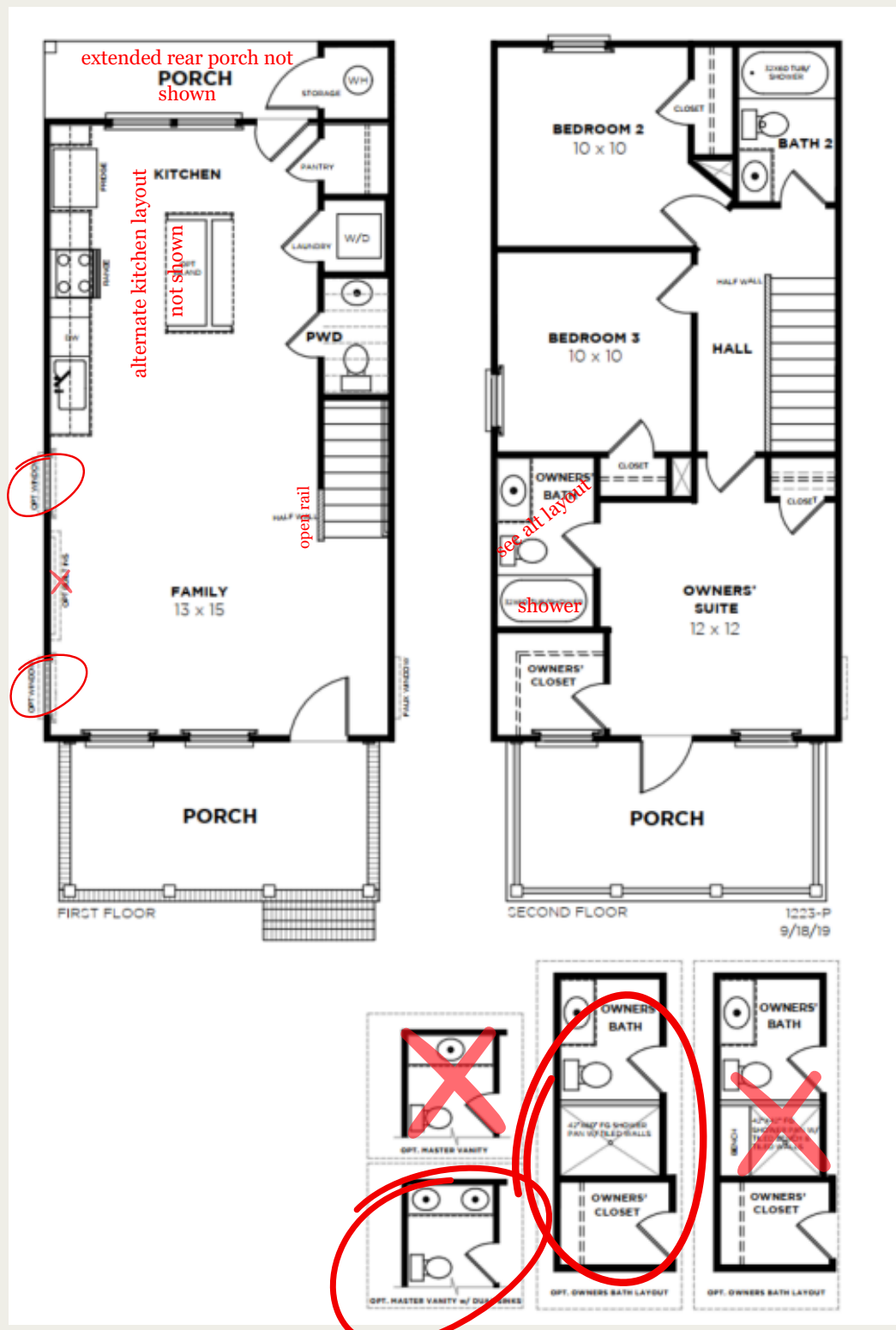
# TRIMWORK & OTHER SELECTIONS

- BASEBOARDS - OPTIONAL 1X6
- WINDOW CASINGS - OPTIONAL  
1X4 LEGS, 1X6 HEADS W/ SILL



- CASED OPENINGS - OPTIONAL  
1X4 LEGS, 1X6 HEADS
- DOOR CASINGS - STANDARD  
1X4 LEGS, 1X6 HEADS

- OPTIONAL EXTENDED PORCH  
LAYOUT W/ UTILITY ROOM
- OPTIONAL ALTERNATE  
KITCHEN LAYOUT W/ SINK IN  
ISLAND
- OPTIONAL PRIMARY BATH W/ 2  
SINKS & 42X60 FG SHOWER PAN  
W/ TILE WALLS
- OPTIONAL OPEN RAIL 1<sup>ST</sup>  
FLOOR
- OPTIONAL (2) WINDOWS IN  
FAMILY ROOM
- STAIRS - STAINED OAK TREADS  
W/ PAINTED RISERS



extended rear porch not shown

alternate kitchen layout not shown

see alt layout

shower

