

LOT 1627
518 IVY GREEN LANE

 SAUSSY BURBANK

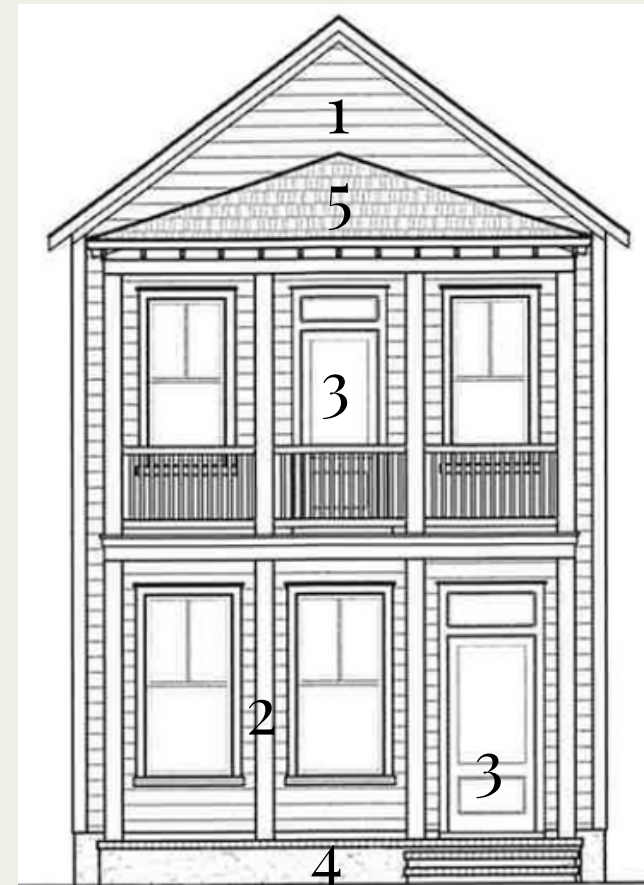
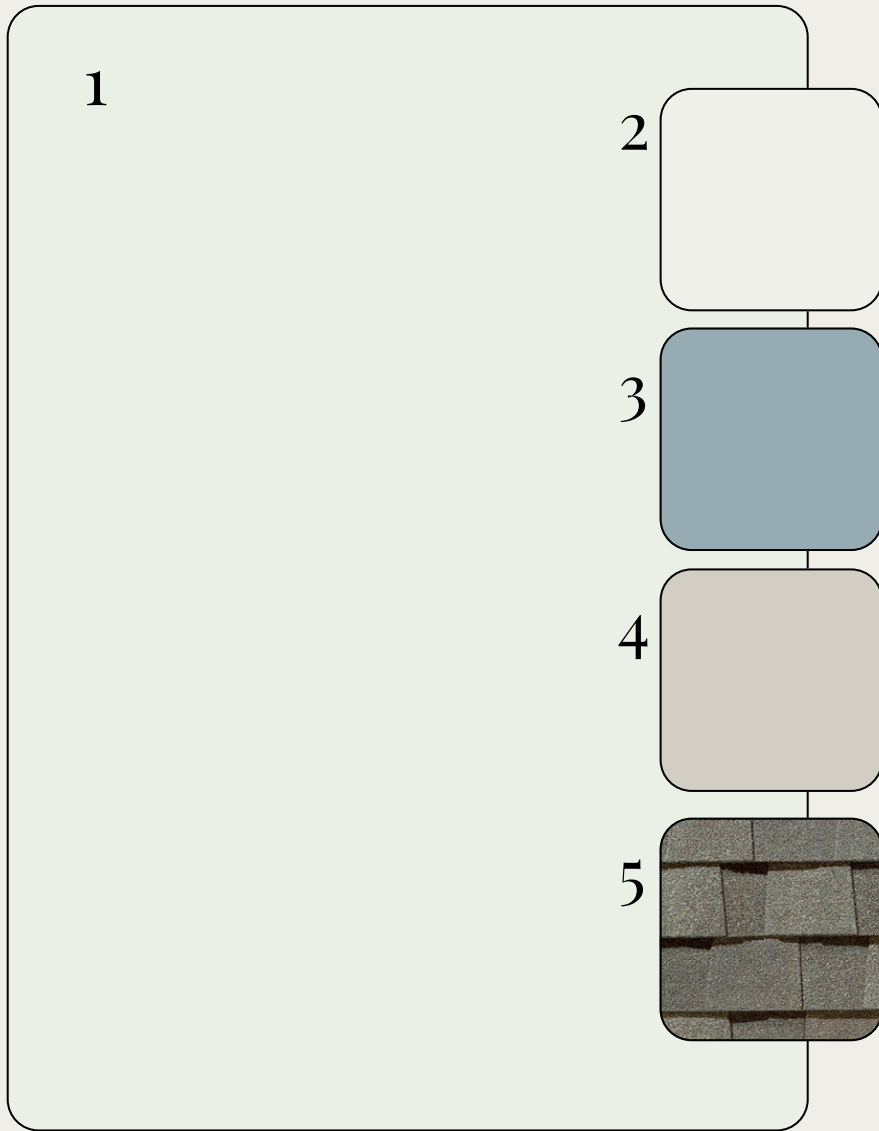


*OPTIONAL UPGRADES MAY BE SHOWN ON ARTIST'S RENDERING. SEE AGENT FOR DETAILS

GRACE-P

EXTERIOR SELECTIONS

1. SIDING - CHARLESTON WHITE (DCR100)
2. TRIM - CHARLESTON WHITE (DCR100)
3. FRONT DOORS - BREACH INLET (DCR070)
4. FOUNDATION - GOSSAMER VEIL (SW9165)
5. ROOF - WEATHERED WOOD



IMAGES SHOWN IN DESIGN BOOK & SAMPLES WILL APPEAR DIFFERENTLY ACROSS VARIOUS SCREENS, AND WHEN INSTALLED IN YOUR HOME UNDER DIFFERENT LIGHTING CONDITIONS.

EXTERIOR HARDWARE & LIGHTING

1



2



3



4



5



1. FRONT DOOR HARDWARE - SUTTON - BLACK
2. INTERIOR DOOR HARDWARE - STRATUS KNOB - BLACK
3. REAR DOOR KEYLESS - TOUCH CENTURY - BLACK
4. FRONT & REAR PORCHES - GALENA LANTERN - COPPER
5. GARAGE DOORS - FREDRICKSBURG LANTERN - COPPER

INTERIOR SELECTIONS

1

2

3

4

1. WALL PAINT- SNOWBOUND (SW7004)
2. TRIM PAINT - PURE WHITE (SW7005)
3. FLOORING - LVP -MOHAWK - ARBOR BANKS - ELLIS (1ST FLOOR LIVING AREAS, LAUNDRY, 2ND FLOOR HALL)
4. CARPET -MOHAWK - LUSTROUS TONES - ISLAND TAUPE (PRIMARY BEDROOM, BED 2 & 3)

INTERIOR LIGHTING

1



2



3



1. FAMILY ROOM & PRIMARY BEDROOM - ERA 52" LED - WHITE
2. BED 2 & 3 - LARSON FLUSH MOUNT - MATTE WHITE
3. CLOSETS, FOYER, LAUNDRY - ROUND CEILING MOUNT - WHITE

KITCHEN



1



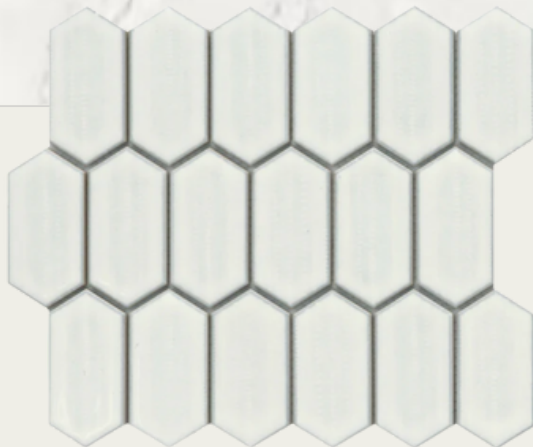
2



3



4



5



6



7

1. FAUCET/AIRSWITCH BUTTON - DELTA TRINSIC - STAINLESS
2. STAINLESS STEEL UNDERMOUNT SINK
3. PENDANT LIGHTS - PRATT STREET METAL 1-LIGHT PENDANTS - BRUSHED NICKEL (X2)
4. COUNTERTOPS- QUARTZ - PEARL JASMINE
5. BACKSPLASH - OMNI PICKET MOSAIC - IVORY
6. CABINET HARDWARE - ANTIC PULL
7. CABINETS - TIMBERLAKE BARNETT - PAINTED LINEN

APPLIANCES

1

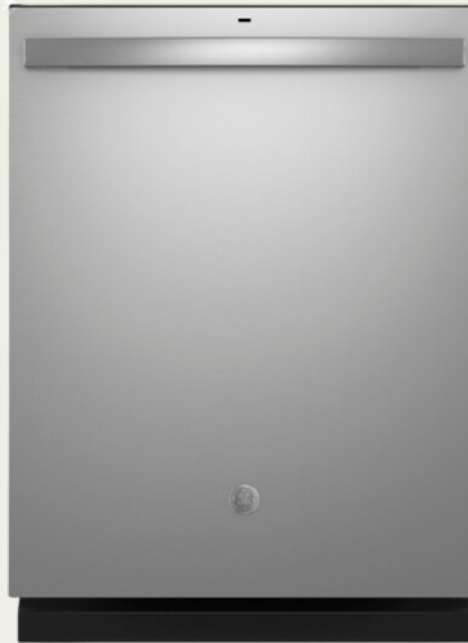


1. MICROWAVE (OVER RANGE) - GE - JVM3162RJSS - STAINLESS
2. GAS RANGE - GE - GGS500SVSS - STAINLESS STEEL
3. DISHWASHER- GE - GDT635HSRSS - STAINLESS STEEL

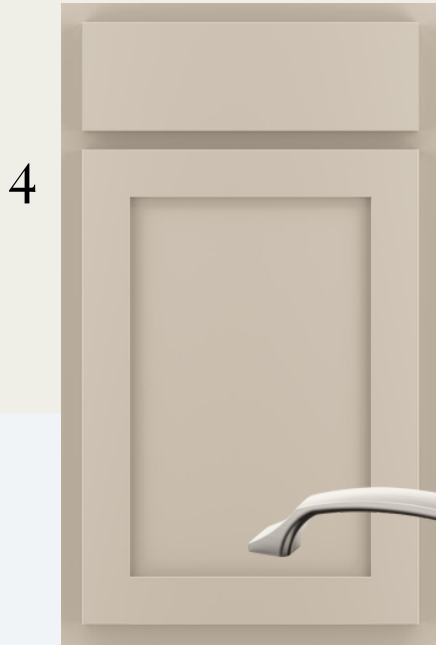
2



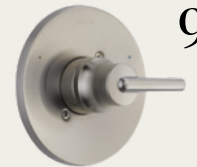
3



PRIMARY BATHROOM



1. FAUCET- DELTA TRINSIC - STAINLESS - WIDESPREAD (X2)
2. SINK-RECTANGULAR BASIN (X2)
3. BATHROOM LIGHT FIXTURE - ANDERS MEDIUM - BRUSHED NICKEL (X2)
4. CABINETS-TIMBERLAKE BARNETT - PAINTED OAT
5. COUNTERTOPS- QUARTZ - MIAMI WHITE
6. HARDWARE- ANTIC PULL
7. BATHROOM FLOOR- JUTE 12X24 - LINEN
8. SHOWER WALLS - CATCH 4X10 - ICE GLOSSY
9. SHOWER FIXTURE - DELTA TRINSIC
10. SHOWER ENCLOSURE - FRAMELESS



BATHROOM TWO



1



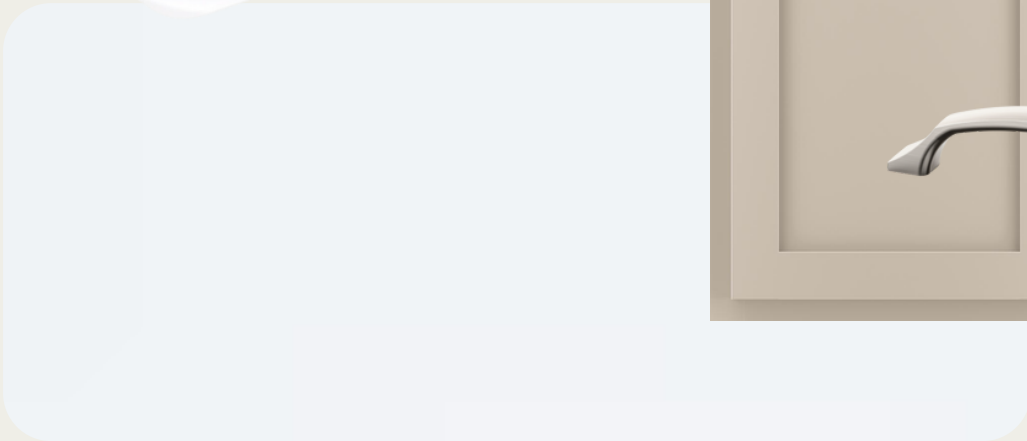
2



3



4



5



7

6



8



9

- 1. FAUCET- DELTA TRINSIC - CENTERSET (X1)
- 2. SINK-RECTANGULAR BASIN (X1)
- 3. BATHROOM LIGHTING - ANDERS MEDIUM (X1)
- 4. CABINETS - TIMBERLAKE BARNETT - PAINTED OAT
- 5. COUNTERTOPS - QUARTZ - MIAMI WHITE
- 6. HARDWARE - ANTIC PULL
- 7. BATHROOM FLOOR - JUTE 12X24 - LINEN
- 8. TUB/SHOWER FIXTURE - DELTA TRINSIC
- 9. TUB- VIKRELL TUB

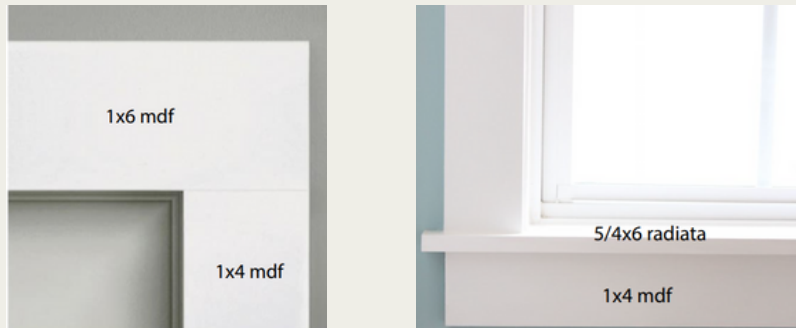
POWDER ROOM



1. FAUCET- DELTA TRINSIC - CENTERSET
2. BATHROOM LIGHTING - ANDERS MEDIUM (X1)
3. PEDESTAL SINK - SACRAMENTO - WHITE

TRIMWORK & OTHER SELECTIONS

- BASEBOARDS - OPTIONAL 1X6
- WINDOW CASINGS - OPTIONAL
1X4 LEGS, 1X6 HEADS W/ SILL



- CASED OPENINGS - OPTIONAL
1X4 LEGS, 1X6 HEADS
- DOOR CASINGS - STANDARD
1X4 LEGS, 1X6 HEADS
- STAIRS - STAINED OAK TREADS
W/ PAINTED RISERS

- OPTIONAL EXTENDED REAR
PORCH W/ UTILITY ROOM
- OPTIONAL ALTERNATE
KITCHEN LAYOUT W/ SINK IN
ISLAND
- OPTIONAL PRIMARY BATH
DOUBLE VANITY
- OPTIONAL PRIMARY BATH
SHOWER FG PAN W/ BENCH &
TILE WALLS
- OPTIONAL WINDOWS IN
FAMILY ROOM
- OPTIONAL $\frac{3}{4}$ LITE FIBERGLASS
FRONT DOORS
- SHIPLAP TRIM ON BACK OF
KITCHEN ISLAND

