

LOT 1472
323 TRAILMORE LANE

 SAUSSY BURBANK



*OPTIONAL UPGRADES MAY BE SHOWN ON ARTIST'S RENDERING, SEE AGENT FOR DETAILS.

BLOSSOM-O

EXTERIOR SELECTIONS

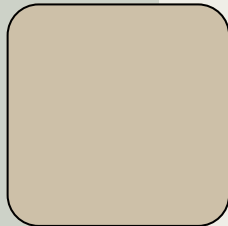
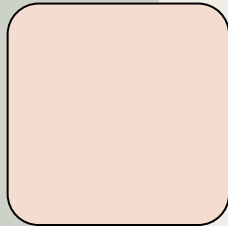
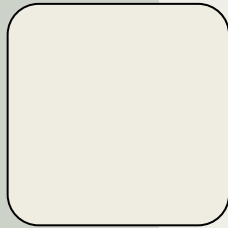
1

2

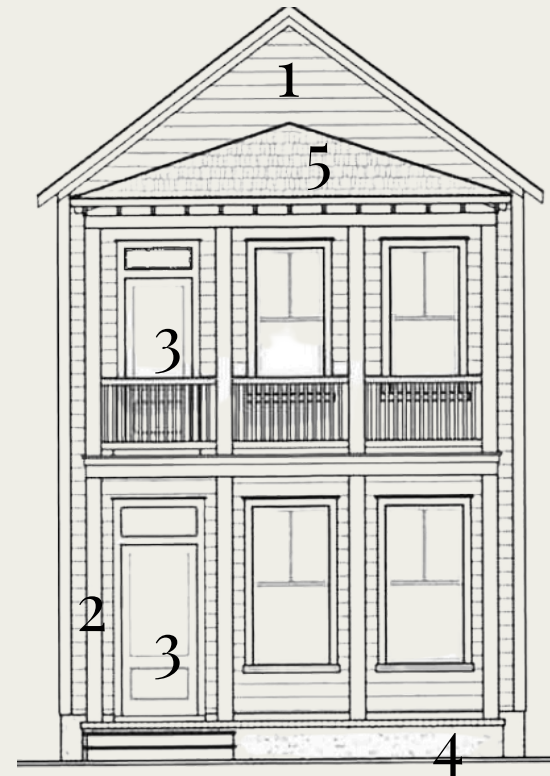
3

4

5



1. SIDING - SEA SALT (SW6204)
2. TRIM- GREEK VILLA (SW7551)
3. FRONT DOOR- PINCKNEY (DCR039)
4. FOUNDATION - NANTUCKET DUNE (SW7527)
5. ROOF- WEATHERED WOOD



EXTERIOR HARDWARE & LIGHTING

1



2



3



1. FRONT DOOR HARDWARE - SUTTON - BLACK
2. INTERIOR DOOR HARDWARE - STRATUS KNOB - BLACK
3. REAR DOOR KEYLESS - TOUCH CENTURY - BLACK
4. FRONT & REAR PORCHES - GALENA SMALL LANTERN - BLACK
5. GARAGE DOORS - BARN LIGHT LARGE - BLACK

4



5



INTERIOR SELECTIONS

1. WALL PAINT- PURE WHITE (SW7005)
2. TRIM PAINT - PURE WHITE (SW7005)
3. FLOORING - LVP -MOHAWK - ARBOR BANKS - ELLIS (1ST FLOOR LIVING AREAS, PRIMARY BEDROOM, LAUNDRY, ALT 2ND FLOOR)
4. CARPET -MOHAWK - CHARMING TONES - WARM ALMOND (BED 2 & 3)
5. STAIR STAIN - AMBER PINE (MW433)

1

2

3

4

5



INTERIOR LIGHTING



1

1. FAMILY ROOM & PRIMARY BEDROOM - 52" JOVIE LED CEILING FAN - WHITE
2. FOYER & REAR ENTRY - CORTES FLUSH MOUNT - SATIN BRASS
3. DINING ROOM - THURLO MEDIUM SHADE - SATIN BRASS
4. CLOSETS - ROUND CEILING MOUNT - WHITE
5. BED 2 & 3 - RHETT MEDIUM FLUSH MOUNT - SATIN BRASS



2



3



4



5

KITCHEN



1

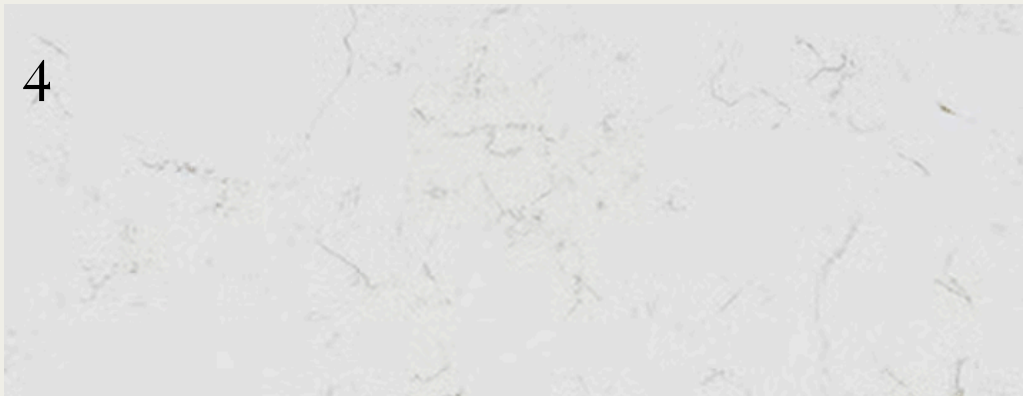


2

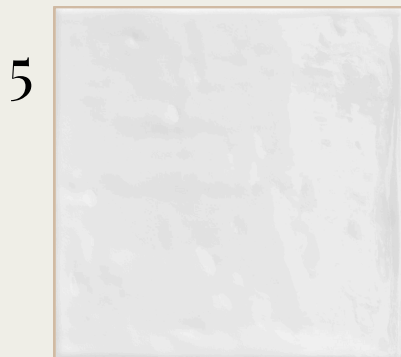


3

1. FAUCET- DELTA MONROVIA - CHAMPAGNE BRONZE
2. UNDERMOUNT SINK- STAINLESS STEEL
3. PENDANT LIGHTS - CORTES MEDIUM HANGING SHADES - SATIN BRASS (X2)
4. COUNTERTOPS- QUARTZ - MIAMI ORO
5. BACKSPLASH - ANTIGO 5X5 SNOW - EXTENDED TO CEILING AT HOOD
6. CABINET HARDWARE - ANTIC PULL
7. CABINETS - TIMBERLAKE BARNETT - PAINTED HARBOR



4



5



6

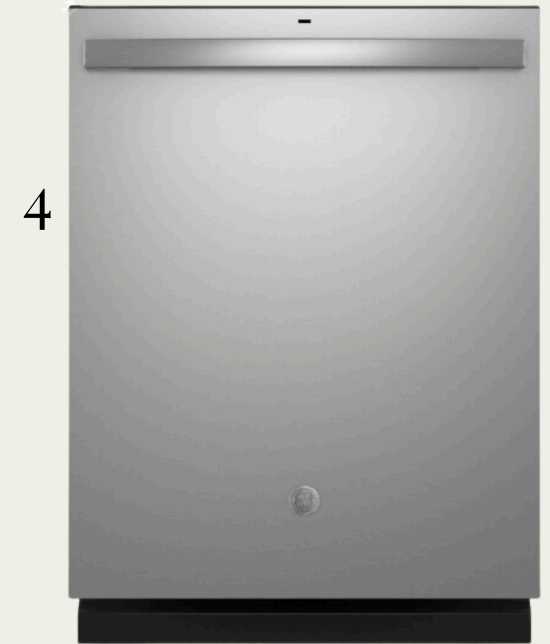


7

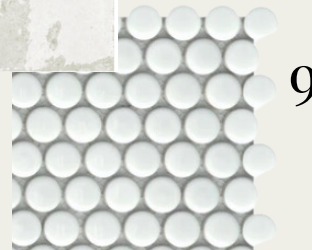
APPLIANCES



1. HOOD- GE - JYW5301SJSS - STAINLESS STEEL
2. GAS RANGE - GE - JGSS66SELSS - STAINLESS STEEL
3. MICROWAVE DRAWER - SHARP - SMD2470ASY - STAINLESS STEEL
4. DISHWASHER- GE - GDT635HSRSS - STAINLESS STEEL



PRIMARY BATHROOM



11



1. FAUCET- DELTA TRINSIC - CHAMPAGNE BRONZE - WIDESPREAD (X2)
2. SINK-RECTANGULAR BASIN (X2)
3. BATHROOM LIGHT FIXTURE - SAYWARD 2-LIGHT - SATIN BRASS (X2)
4. CABINETS-TIMBERLAKE BARNETT - PAINTED HARBOR
5. HARDWARE- ANTIC PULL
6. COUNTERTOPS- QUARTZ - BLANCO MAPLE
7. BATHROOM FLOOR- JUTE 12X24 IVORY
8. SHOWER WALLS - INHALE 4X12 BLANCO
9. SHOWER FLOOR - INFLUENCE PENNIES - WHITE
10. SHOWER FIXTURE - DELTA TRINSIC
11. SHOWER ENCLOSURE - FRAMELESS

BATHROOM TWO



1



3



2



4



5



6



7



8

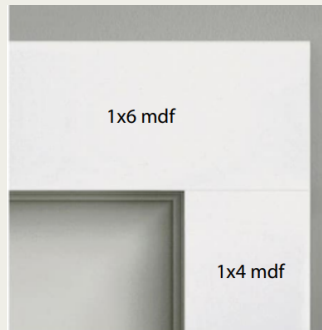


9

- 1. FAUCET- DELTA TRINSIC - SINGLE (X2)
- 2. SINK-RECTANGULAR BASIN (X2)
- 3. BATHROOM LIGHTING - SAYWARD 2-LIGHT (X2)
- 4. CABINETS - TIMBERLAKE BARNETT - PAINTED HARBOR
- 5. COUNTERTOPS- QUARTZ - BLANCO MAPLE
- 6. HARDWARE - ANTIC PULL
- 7. BATHROOM FLOOR - SOLARA 12X24 CABRIO
- 8. TUB/SHOWER FIXTURE - DELTA TRINSIC
- 9. TUB- VIKRELL TUB

TRIMWORK & OTHER SELECTIONS

- BASEBOARDS - OPTIONAL 1X6
- WINDOW CASINGS - OPTIONAL
1X4 LEGS, 1X6 HEADS W/ SILL



- CASED OPENINGS - OPTIONAL
1X4 LEGS, 1X6 HEADS
- DOOR CASINGS - STANDARD
1X4 LEGS, 1X6 HEADS
- STAIRS - STAINED OAK TREADS
W/ PAINTED RISERS

REAR ENTRY DROP ZONE



*PICTURE FOR REFERENCE
ONLY - SOME FEATURES
MAY VARY

