

LOT 1544  
814 GENTLE BREEZE DR

SAUSSY BURBANK

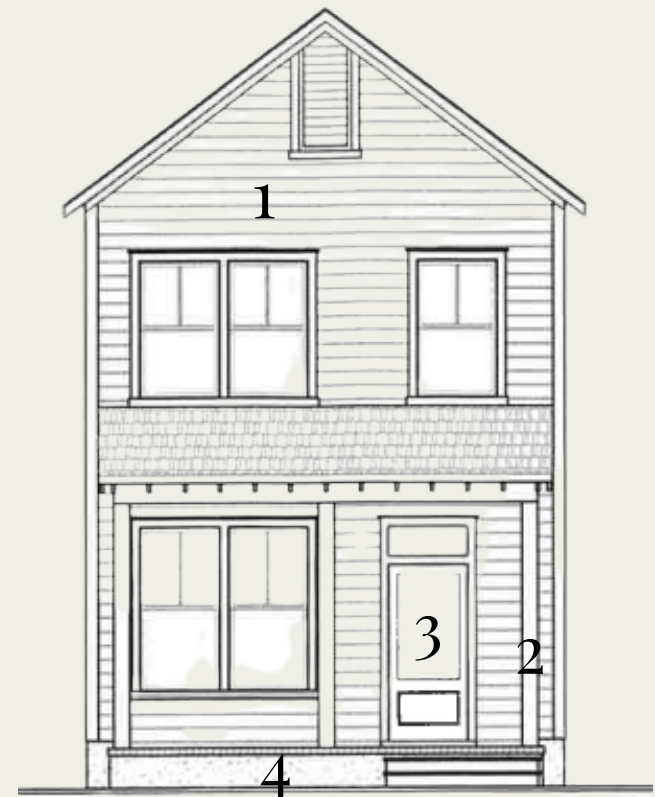
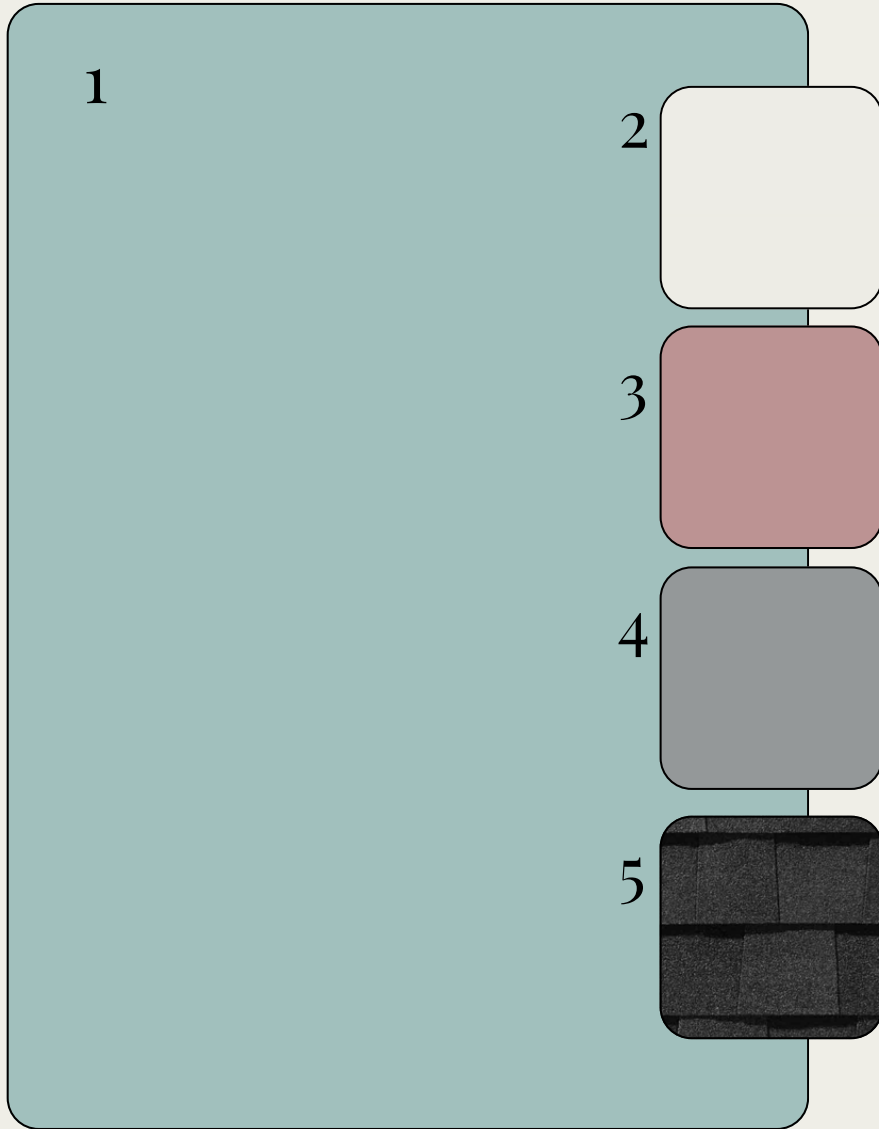


\*OPTIONAL UPGRADES MAY BE SHOWN ON ARTIST'S RENDERING. SEE AGENT FOR DETAILS

ROWAN-O

# EXTERIOR SELECTIONS

1. SIDING - AQUAVERDE (SW9051)
2. TRIM- PURE WHITE (SW7005)
3. FRONT DOOR- PRESSED FLOWER (SW6304)
4. FOUNDATION - AFRICAN GREY (SW9162)
5. ROOF- MOIRE BLACK



# EXTERIOR HARDWARE & LIGHTING

1



2



3



4



5



1. FRONT DOOR HARDWARE - SUTTON - BLACK
2. INTERIOR DOOR HARDWARE - STRATUS KNOB - BLACK
3. REAR DOOR KEYLESS - TOUCH CENTURY - BLACK
4. FRONT & REAR PORCHES - WARREN WALL LANTERN - BLACK
5. GARAGE DOORS - BARN LIGHT LARGE - BLACK

# INTERIOR SELECTIONS

1

2

3

4

1. WALL PAINT- PURE WHITE (SW7005)
2. TRIM PAINT - PURE WHITE (SW7005)
3. FLOORING - LVP -MOHAWK - ARBOR BANKS - ELLIS (1ST FLOOR LIVING AREAS, LAUNDRY, 2ND FLOOR HALL)
4. CARPET -MOHAWK - LUSTROUS TONES - WARM ALMOND (PRIMARY BEDROOM, BED 2 & 3)

# INTERIOR LIGHTING

1



1. FAMILY ROOM & PRIMARY BED - ERA LED FANS - WHITE
2. BED 2 & 3 - RHETT FLUSH MOUNT - SATIN BRASS
3. DINING ROOM - MOFFETT STREET LINEAR PENDANT - SATIN BRASS
4. CLOSETS - ROUND CEILING MOUNT - WHITE

2



3



4



# KITCHEN



1

3

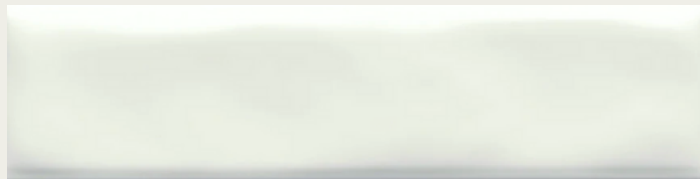
2

1. FAUCET/AIRSWITCH BUTTON - DELTA TRINSIC - CHAMPAGNE BRONZE
2. STAINLESS STEEL UNDERMOUNT SINK
3. PENDANT LIGHTS - KATE 1-LIGHT SPHERES - SATIN BRASS (X2)
4. COUNTERTOPS- QUARTZ - CARRARA BREVE
5. BACKSPLASH - ESTASI FLAT 3X12 - WHITE GLOSSY
6. CABINET HARDWARE - TEMPO PULL
7. CABINETS - TIMBERLAKE BARNETT - PAINTED LINEN

4



5



7

6



# APPLIANCES

1

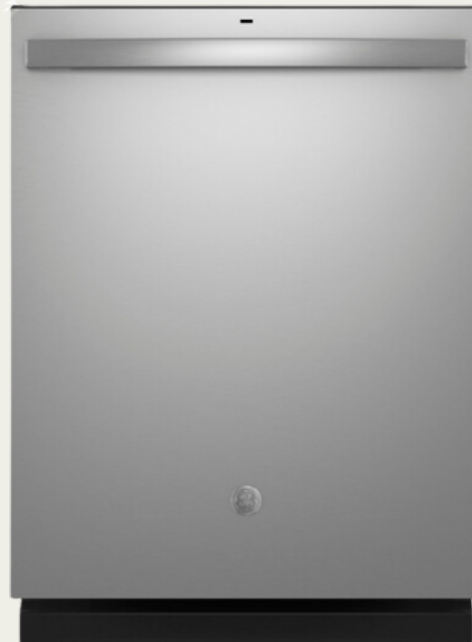


1. MICROWAVE - GE - JVM3162RJSS - STAINLESS STEEL
2. GAS RANGE - GE - GGS500SVSS - STAINLESS STEEL
3. DISHWASHER- GE - GDT635HSRSS - STAINLESS STEEL

2



3



# PRIMARY BATHROOM



3



4



5

6

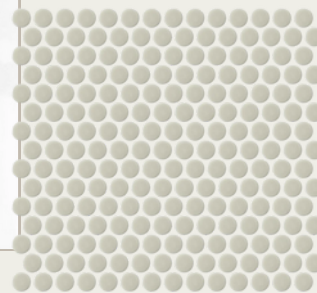


10

7



8



9

1. FAUCET- DELTA TRINSIC - CHAMPAGNE BRONZE - WIDESPREAD (X2)
2. SINK-RECTANGULAR BASIN (X2)
3. BATHROOM LIGHT FIXTURE - MERCER 2-LIGHT - BURNISHED BRASS (X2)
4. CABINETS-TIMBERLAKE BARNETT - PAINTED LINEN
5. COUNTERTOPS- QUARTZ - BLANCO MAPLE
6. HARDWARE - TEMPO PULL
7. BATHROOM FLOOR- JUTE 12X24 - IVORY
8. SHOWER WALLS - CATCH 3X12 - ICE GLOSSY
9. SHOWER FLOOR - SAVVY PENNIES - OAT
10. SHOWER FIXTURE - DELTA TRINSIC
11. SHOWER ENCLOSURE - FRAMELESS

11



# BATHROOM TWO



1



3



2



4

6



5



7

- 1. FAUCET- DELTA TRINSIC - CENTERSET (X1)
- 2. SINK-RECTANGULAR BASIN (X1)
- 3. BATHROOM LIGHTING - MERCER 2-LIGHT (X1)
- 4. CABINETS - TIMBERLAKE BARNETT - PAINTED LINEN
- 5. COUNTERTOPS- QUARTZ - BLANCO MAPLE
- 6. HARDWARE - TEMPO PULL
- 7. BATHROOM FLOOR - SILHOUETTE 12X24 - FIGURE
- 8. TUB/SHOWER FIXTURE - DELTA TRINSIC
- 9. TUB- VIKRELL TUB

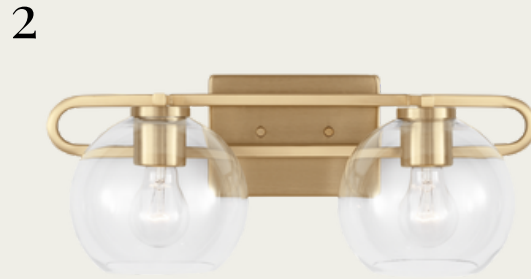


8



9

# POWDER ROOM



1. FAUCET- DELTA TRINSIC - CENTERSET
2. BATHROOM LIGHTING - CODYN 2-LIGHT (X1)
3. PEDESTAL SINK - SACRAMENTO - WHITE

# TRIMWORK & OTHER SELECTIONS

- BASEBOARDS - OPTIONAL 1X6
- WINDOW CASINGS - OPTIONAL  
1X4 LEGS, 1X6 HEADS W/ SILL



- CASED OPENINGS - OPTIONAL  
1X4 LEGS, 1X6 HEADS
- DOOR CASINGS - STANDARD  
1X4 LEGS, 1X6 HEADS
- STAIRS - STAINED OAK TREADS  
W/ PAINTED RISERS
- OPTIONAL EXTENDED REAR  
PORCH W/ UTILITY ROOM

