

LOT 1577
366 TRAILMORE LANE

 SAUSSY BURBANK

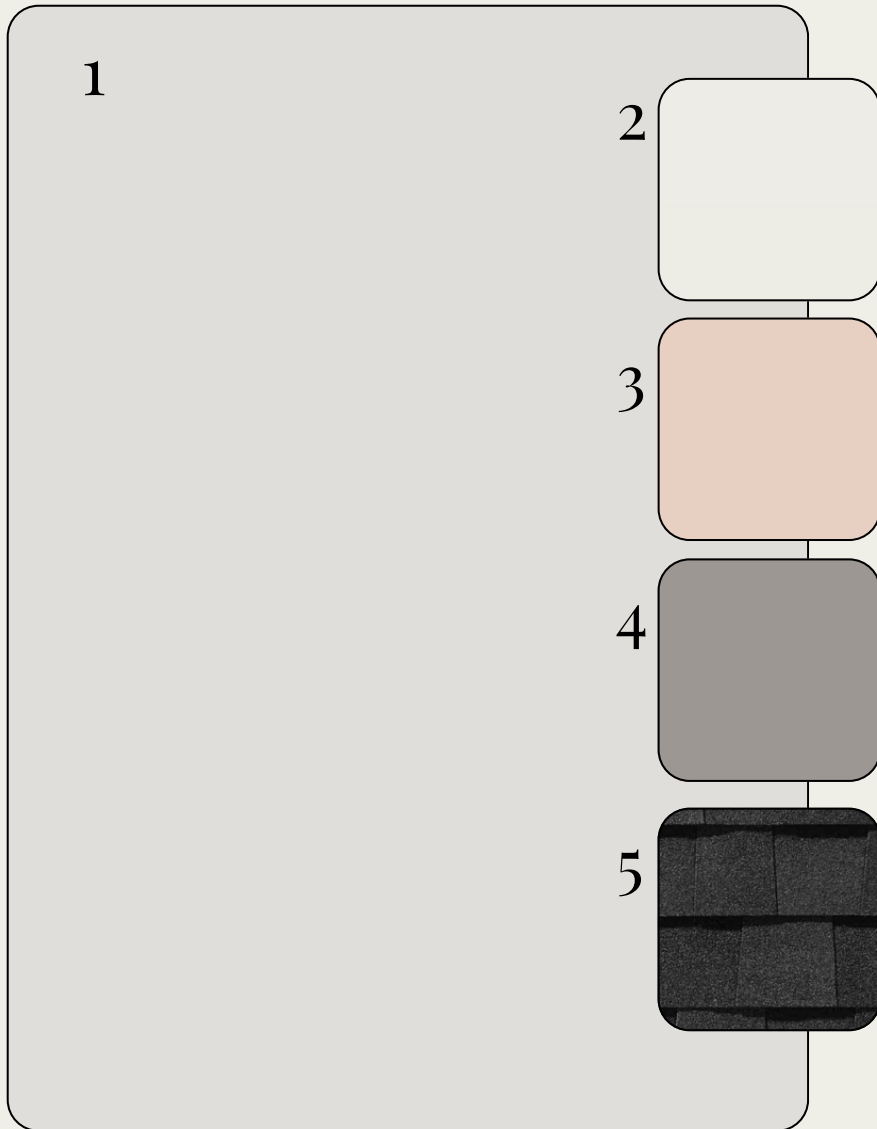


*OPTIONAL UPGRADES MAY BE SHOWN ON ARTIST'S RENDERING. SEE AGENT FOR DETAILS

TOPSAIL - NR

EXTERIOR SELECTIONS

1. SIDING - SNOWFALL (SW6000)
2. TRIM- PURE WHITE (SW7005)
3. FRONT DOOR- ROMANCE (SW6323)
4. FOUNDATION - POLISHED CONCRETE (SW9167)
5. ROOF- MOIRE BLACK



EXTERIOR HARDWARE & LIGHTING

1



2



3



4



5



6



1. FRONT DOOR HARDWARE - SUTTON - BLACK
2. INTERIOR DOOR HARDWARE - STRATUS KNOB - BLACK
3. REAR DOOR KEYLESS - TOUCH CENTURY - BLACK
4. FRONT DOOR - FOUNDERS PENDANT - BLACK
5. REAR PORCH - FOUNDERS MEDIUM WALL LANTERN - BLACK
6. GARAGE DOORS - BARN LIGHT MEDIUM - BLACK

INTERIOR SELECTIONS

1. WALL PAINT- PURE WHITE (SW7005)
2. TRIM PAINT - PURE WHITE (SW7005)
3. FLOORING - LVP - MOHAWK - ARBOR BANKS - ELLIS (1ST FLOOR LIVING AREAS, PRIMARY BED, BED 2 & BED 3)
4. LAUNDRY FLOOR TILE - JUTE 12X24 - LINEN

1

2

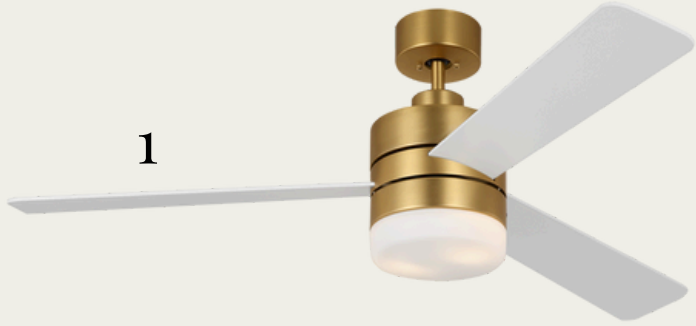
3

4



INTERIOR LIGHTING

1



1. FAMILY ROOM - ERA LED CEILING FAN - WHITE/BURNISHED BRASS
2. FOYER - PERRYTON MEDIUM LANTERN - SATIN BRASS
3. DINING ROOM - MOFFET STREET LINEAR PENDANT - SATIN BRASS
4. CLOSETS, LAUNDRY - ROUND CEILING MOUNT - WHITE
5. BED 2 & 3 - RHETT FLUSH MOUNT - SATIN BRASS
6. PRIMARY BEDROOM - ERA LED CEILING FAN - WHITE

2



3



4



5



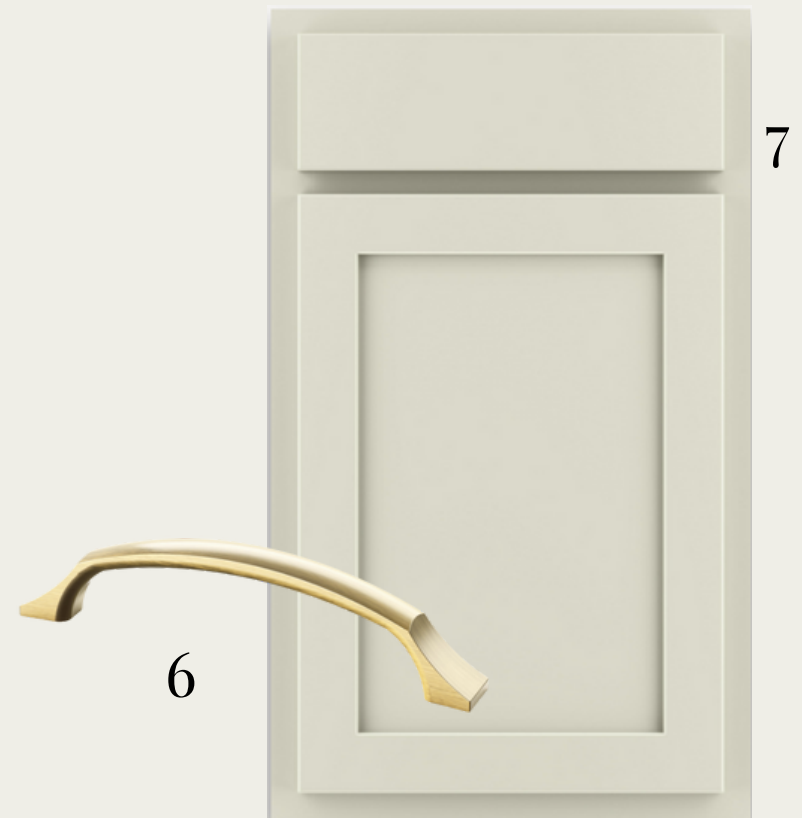
6



KITCHEN



1. FAUCET/AIRSWITCH BUTTON - DELTA MONROVIA - CHAMPAGNE BRONZE
2. UNDERMOUNT SINK - KOHLER COMPOSITE - WHITE
3. PENDANT LIGHTS - LIOUET SMALL PENDANTS - SATIN BRASS (X2)
4. COUNTERTOPS- QUARTZ - MIAMI WHITE
5. BACKSPLASH - ESTASI PEAK - 3X12 - WHITE GLOSSY (EXTENDED TO CEILING AT HOOD)
6. CABINET HARDWARE - ANTIC PULL
7. CABINETS - TIMBERLAKE BARNETT - PAINTED HARBOR



APPLIANCES

1



1. HOOD - GE - JYW5301SJSS - STAINLESS STEEL

2. GAS RANGE - GE - GGS500SVSS - STAINLESS STEEL

3. MICROWAVE DRAWER - SHARP - SMD2470ASY - STAINLESS STEEL

4. DISHWASHER- GE - GDT635HSRSS - STAINLESS STEEL

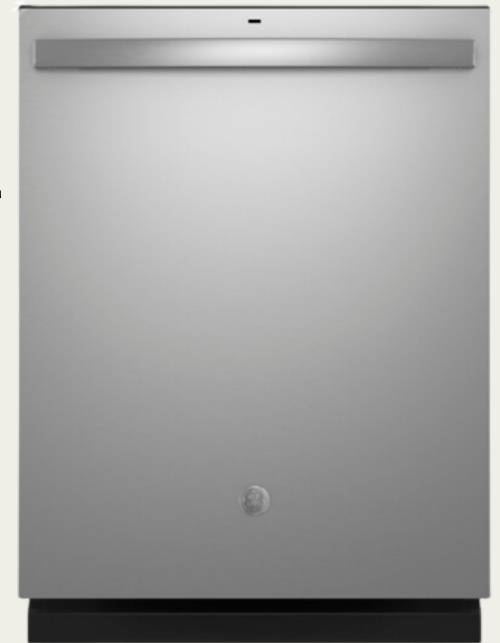
2



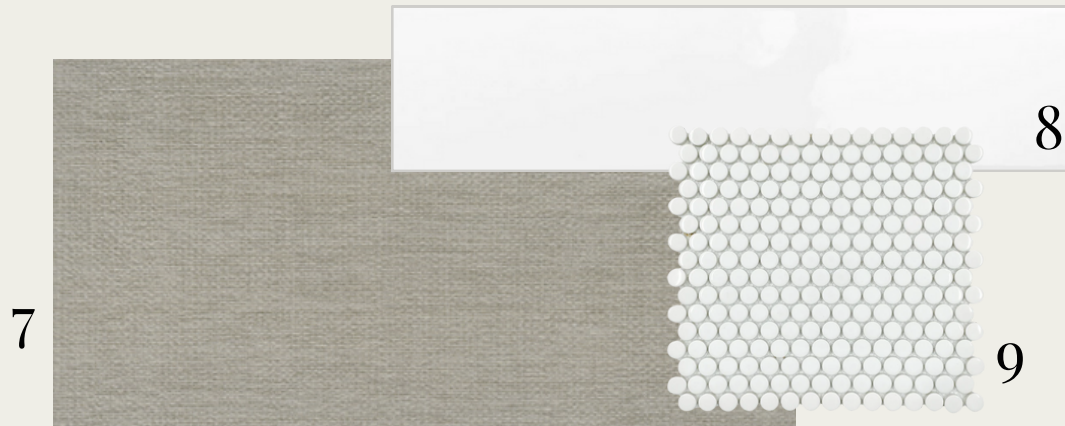
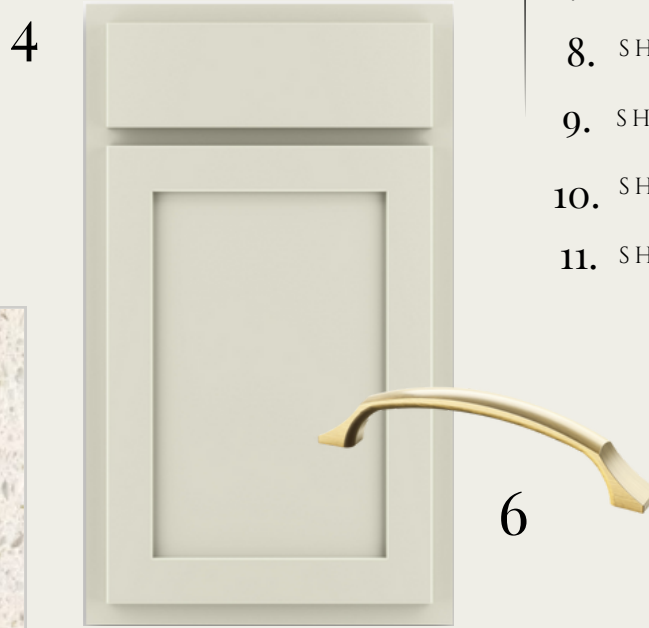
3



4



PRIMARY BATHROOM



1. FAUCET- DELTA TRINSIC - CHAMPAGNE BRONZE - WIDESPREAD (X2)
2. SINK-RECTANGULAR BASIN (X2)
3. BATHROOM LIGHTING - LANDO 2-LIGHT (X2) - SATIN BRASS
4. CABINETS-TIMBERLAKE BARNETT - PAINTED HARBOR
5. COUNTERTOPS- QUARTZ - BLANCO MAPLE
6. HARDWARE- ANTIC PULL
7. BATHROOM FLOOR- JUTE 12X24 - LINEN
8. SHOWER WALLS - CATCH 3X12 - ICE GLOSSY
9. SHOWER FLOOR TILE - SAVVY PENNIES - WHITE
10. SHOWER FIXTURE - DELTA TRINSIC
11. SHOWER ENCLOSURE - FRAMELESS

BATHROOM TWO



1



3



2



4



5



6



8



9

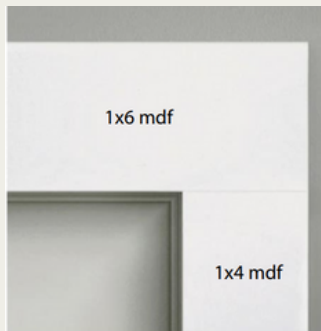


7

- 1. FAUCET- DELTA TRINSIC - CENTERSET
- 2. SINK-RECTANGULAR BASIN (X2)
- 3. BATHROOM LIGHTING - LANDO 2-LIGHT - SATIN BRASS
- 4. CABINETS - TIMBERLAKE BARNETT - PAINTED HARBOR
- 5. COUNTERTOPS- QUARTZ - BLANCO MAPLE
- 6. HARDWARE - ANTIC KNOB
- 7. BATHROOM FLOOR - JUTE 12X24 - LINEN
- 8. TUB/SHOWER FIXTURE - DELTA TRINSIC
- 9. TUB- VIKRELL TUB

TRIMWORK & OTHER SELECTIONS

- BASEBOARDS - OPTIONAL 1X6
- WINDOW CASINGS - OPTIONAL
1X4 LEGS, 1X6 HEADS W/ SILL

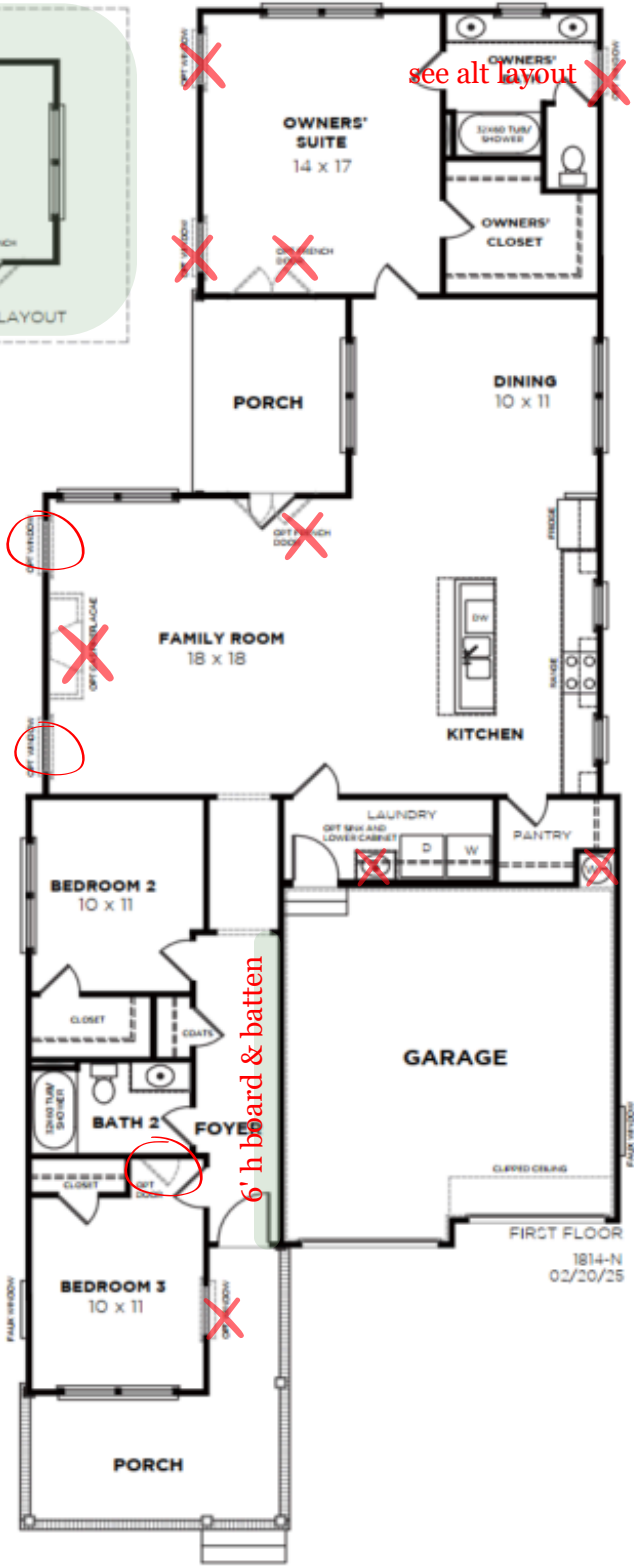
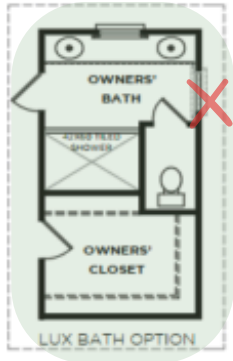
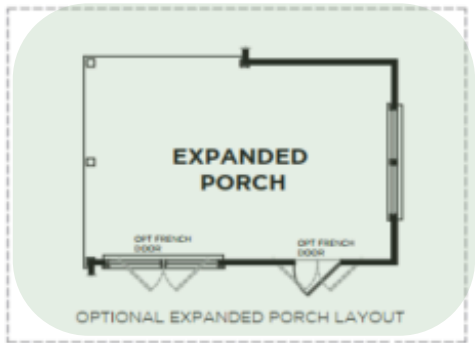


- DOOR CASINGS - STANDARD
1X4 LEGS, 1X6 HEADS
- 6' HIGH VERTICAL BOARD &
BATTEN WALL IN FOYER

- OPTIONAL EXPANDED REAR PORCH
- OPT. PRIMARY BATH LAYOUT -
TILE SHOWER PAN/TILE
SHOWER WALLS
- 2 OPTIONAL WINDOWS IN
LIVING ROOM



PHOTO FOR REFERENCE ONLY - SOME FINISHES AND FEATURES MAY VARY



see alt layout

6' h board & batten

REVERSE