

LOT 1609  
745 BLUEWAY AVE

 SAUSSY BURBANK

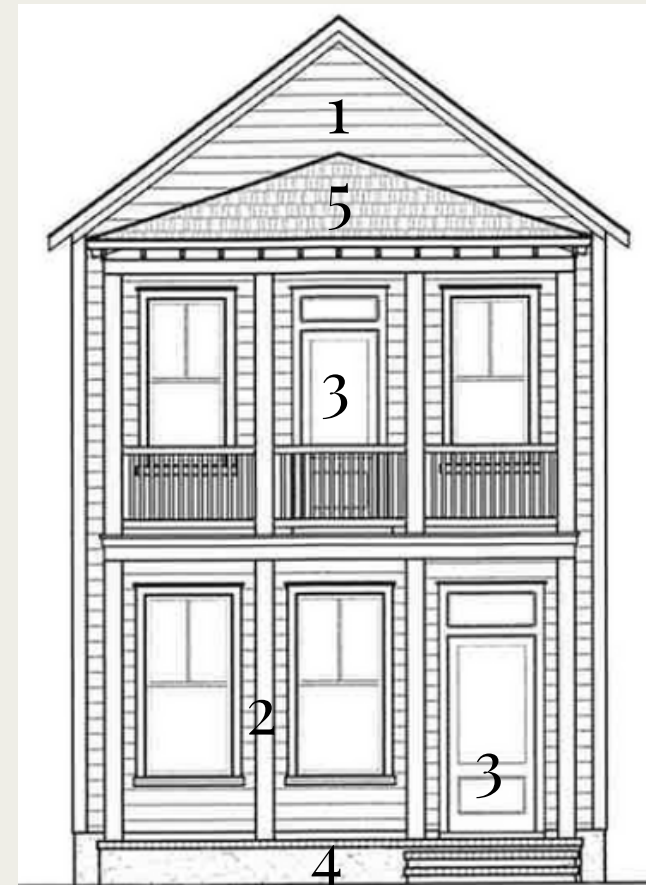
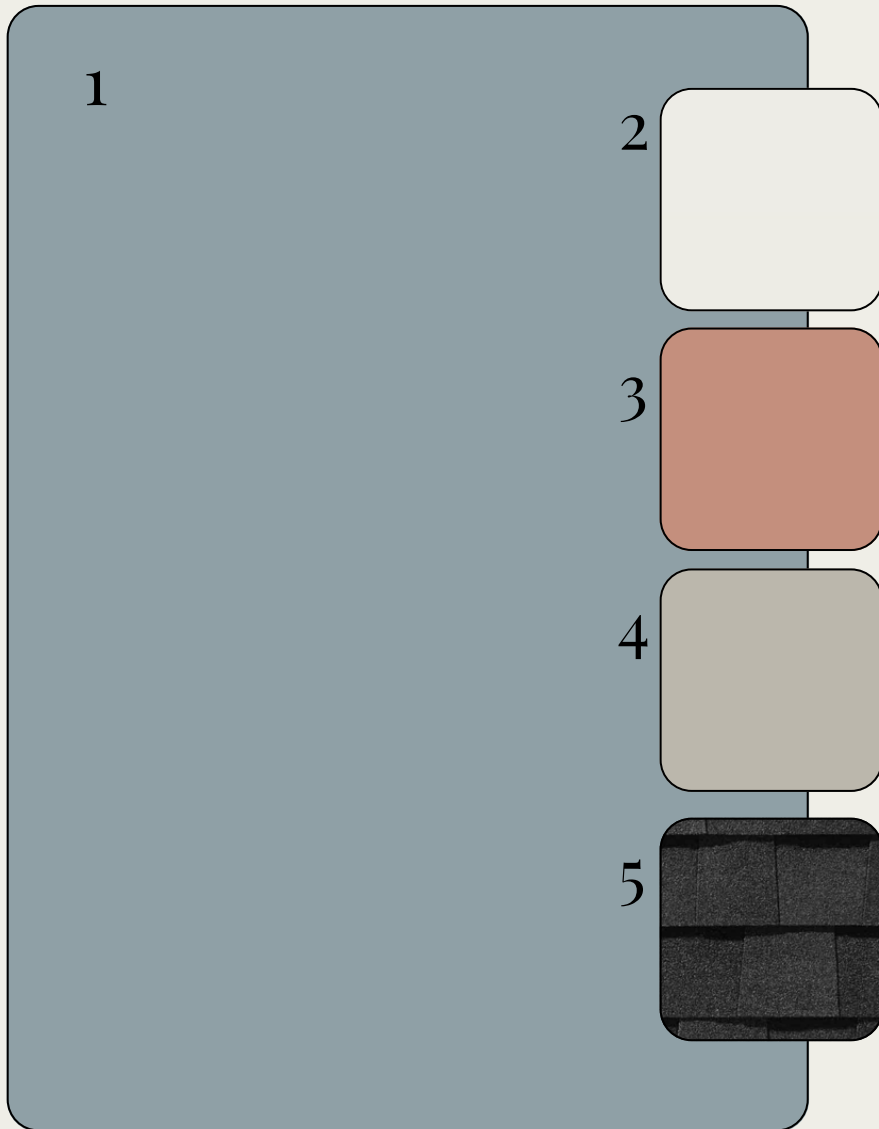


\*OPTIONAL UPGRADES MAY BE SHOWN ON ARTIST'S RENDERING. SEE AGENT FOR DETAILS

ROWAN-P

# EXTERIOR SELECTIONS

1. SIDING - DEBONAIR (SW9139)
2. TRIM - PURE WHITE (SW7005)
3. FRONT DOORS - CONSTANT CORAL (SW6325)
4. FOUNDATION - MINDFUL GREY (SW7016)
5. ROOF - MOIRE BLACK



IMAGES SHOWN IN DESIGN BOOK & SAMPLES WILL APPEAR DIFFERENTLY ACROSS VARIOUS SCREENS, AND WHEN INSTALLED IN YOUR HOME UNDER DIFFERENT LIGHTING CONDITIONS.

# EXTERIOR HARDWARE & LIGHTING

1



2



3



4



5



1. FRONT DOOR HARDWARE - SUTTON - SATIN NICKEL
2. INTERIOR DOOR HARDWARE - STRATUS KNOB - SATIN NICKEL
3. REAR DOOR KEYLESS - TOUCH CENTURY - SATIN NICKEL
4. FRONT & REAR PORCHES - WARREN SMALL LANTERN - BLACK
5. GARAGE DOORS - BARN LIGHT LARGE - BLACK

# INTERIOR SELECTIONS

1

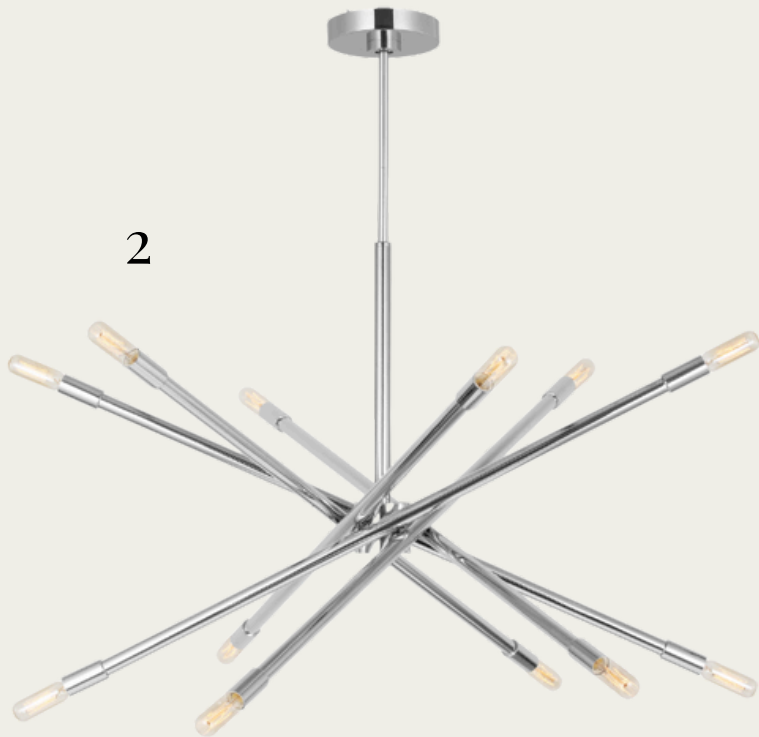
2

3

4

1. WALL PAINT- PURE WHITE (SW7005)
2. TRIM PAINT - PURE WHITE (SW7005)
3. FLOORING - LVP -MOHAWK - ARBOR BANKS - ELLIS (1ST FLOOR LIVING AREAS, LAUNDRY, 2ND FLOOR HALL)
4. CARPET -MOHAWK - LUSTROUS TONES - ISLAND TAUPE (PRIMARY BEDROOM, BED 2 & 3)

# INTERIOR LIGHTING



1. FAMILY ROOM - ERA 52" LED - WHITE
2. DINING ROOM - EASTYN MEDIUM CHANDELIER - POLISHED NICKEL
3. CLOSETS, FOYER, LAUNDRY - ROUND CEILING MOUNT - WHITE
4. BED 2 & 3 - RHETT FLUSH MOUNT - BRUSHED NICKEL
5. PRIMARY BED - ERA 44" LED - WHITE

# KITCHEN



1



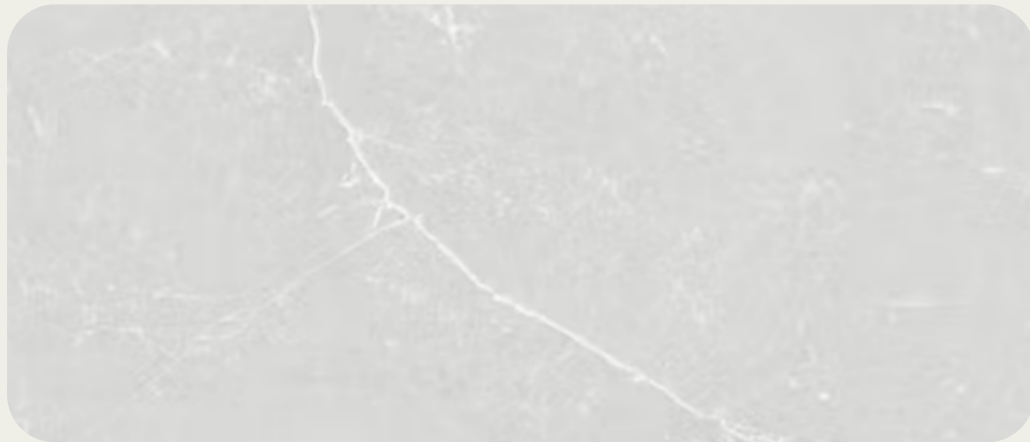
2



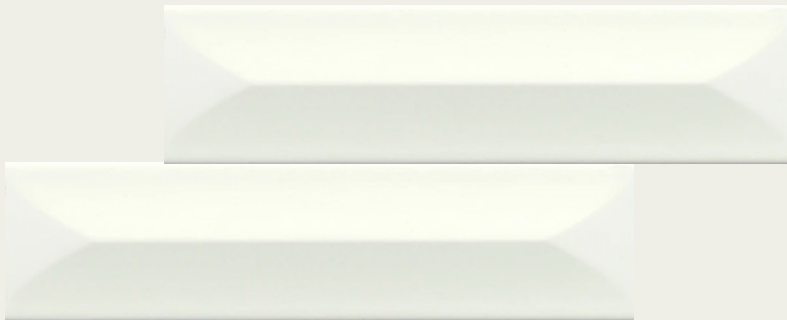
3

1. FAUCET/AIRSWITCH BUTTON - DELTA ANTONI - STAINLESS
2. STAINLESS STEEL UNDERMOUNT SINK
3. PENDANT LIGHTS - LIOUET MEDIUM PENDANTS - BRUSHED NICKEL (X2)
4. COUNTERTOPS- QUARTZ - DESERT SILVER
5. BACKSPLASH - ESTASI PEAK - 3X12 WHITE GLOSSY
6. CABINET HARDWARE - TRILLION PULL
7. CABINETS - TIMBERLAKE BARNETT - PAINTED LINEN (PERIMETER) & PAINTED MIST (ISLAND)

4



5



6



7

# APPLIANCES

1

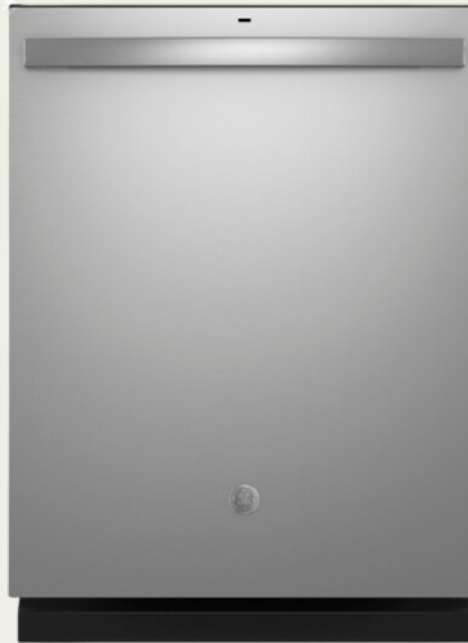


1. MICROWAVE (OVER RANGE) - GE - JVM3162RJSS - STAINLESS
2. GAS RANGE - GE - GGS500SVSS - STAINLESS STEEL
3. DISHWASHER- GE - GDT635HSRSS - STAINLESS STEEL

2



3



# PRIMARY BATHROOM



3



1

2



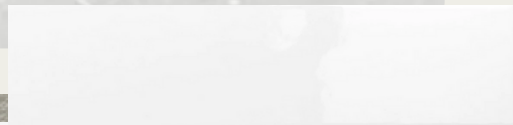
4



6

1. FAUCET- DELTA TRINSIC - STAINLESS - WIDESPREAD (X2)
2. SINK-RECTANGULAR BASIN (X2)
3. BATHROOM LIGHT FIXTURE - CROFTON 2-LIGHT - BRUSHED NICKEL (X2)
4. CABINETS-TIMBERLAKE BARNETT - PAINTED LINEN
5. COUNTERTOPS- QUARTZ - DESERT SILVER
6. HARDWARE- TRILLION PULL
7. BATHROOM FLOOR- JUTE 12X24 - LINEN
8. SHOWER WALLS - CATCH 3X12 - ICE GLOSSY
9. SHOWER FLOOR - SAVVY 2" HEX - WHITE
10. SHOWER FIXTURE - DELTA TRINSIC
11. SHOWER ENCLOSURE - FRAMELESS

5



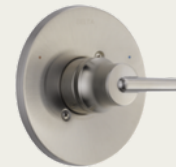
8



9



10



11



7



# BATHROOM TWO



1



3



2



4

6



5



7

8



9

- 1. FAUCET- DELTA TRINSIC - CENTERSET (X1)
- 2. SINK-RECTANGULAR BASIN (X1)
- 3. BATHROOM LIGHTING - CROFTON 2-LIGHT (X1)
- 4. CABINETS - TIMBERLAKE BARNETT - PAINTED LINEN
- 5. COUNTERTOPS - QUARTZ - DESERT SILVER
- 6. HARDWARE - TRILLION PULL
- 7. BATHROOM FLOOR - SILHOUETTE 12X24 - CONTOUR
- 8. TUB/SHOWER FIXTURE - DELTA TRINSIC
- 9. TUB- VIKRELL TUB

# POWDER ROOM



1. FAUCET- DELTA TRINSIC - CENTERSET
2. BATHROOM LIGHTING - LANDO 2-LIGHT (XI)
3. PEDESTAL SINK - SACRAMENTO - WHITE

# TRIMWORK & OTHER SELECTIONS

- BASEBOARDS - OPTIONAL 1X6
- WINDOW CASINGS - OPTIONAL  
1X4 LEGS, 1X6 HEADS W/ SILL



- CASED OPENINGS - OPTIONAL  
1X4 LEGS, 1X6 HEADS
- DOOR CASINGS - STANDARD  
1X4 LEGS, 1X6 HEADS
- STAIRS - STAINED OAK TREADS  
W/ PAINTED RISERS
- OPTIONAL EXTENDED REAR  
PORCH W/ UTILITY ROOM

