

LOT 1610
747 BLUEWAY AVE

 SAUSSY BURBANK

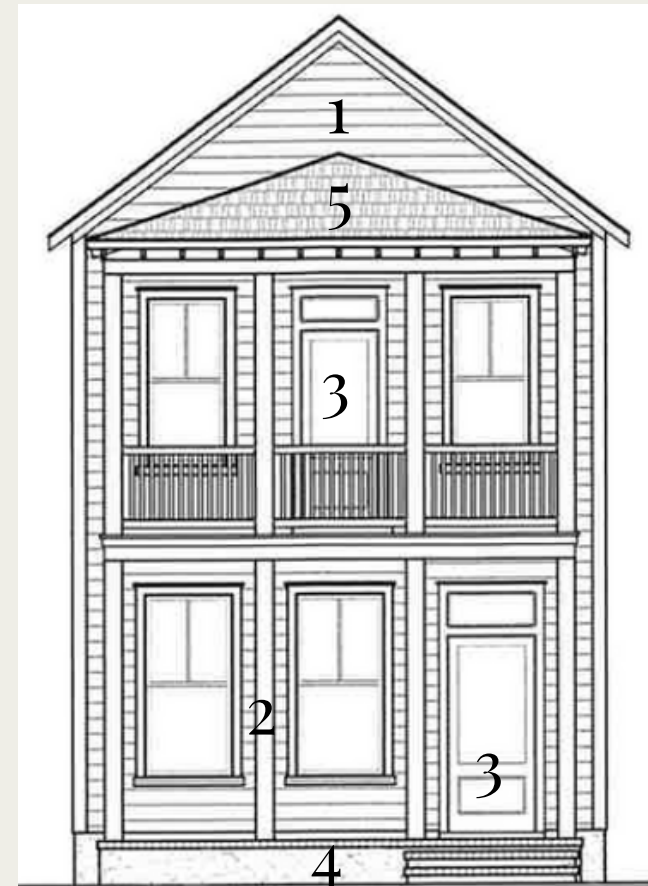
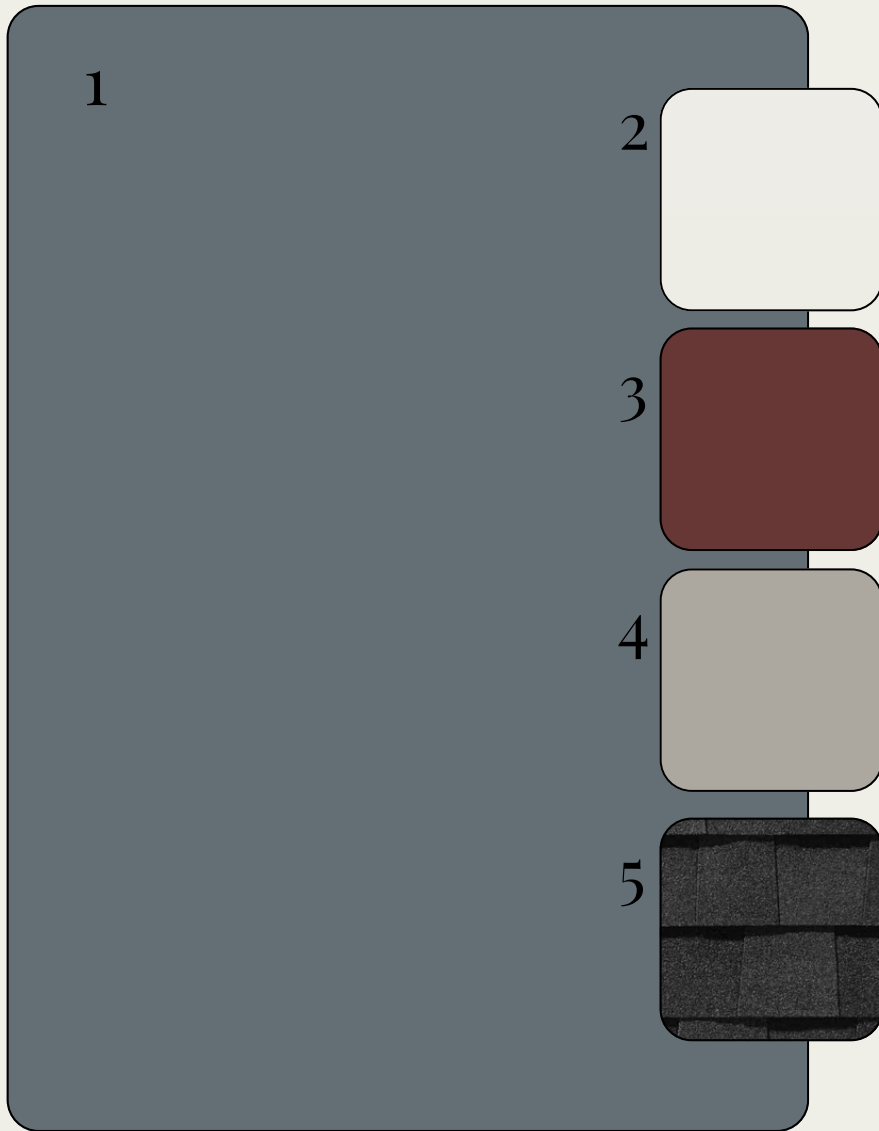


*OPTIONAL UPGRADES MAY BE SHOWN ON ARTIST'S RENDERING. SEE AGENT FOR DETAILS

ROWAN-P

EXTERIOR SELECTIONS

1. SIDING - SLATE TILE (SW7624)
2. TRIM- PURE WHITE (SW7005)
3. FRONT DOORS - RED THEATRE (SW7584)
4. FOUNDATION - DORIAN GREY (SW7017)
5. ROOF- MOIRE BLACK



EXTERIOR HARDWARE & LIGHTING

1



2



3



4



5



1. FRONT DOOR HARDWARE - BARCELONA - SATIN NICKEL
2. INTERIOR DOOR HARDWARE - STRATUS KNOB - SATIN NICKEL
3. REAR DOOR KEYLESS - TOUCH CENTURY - SATIN NICKEL
4. FRONT & REAR PORCHES - WARREN WALL LANTERN - BLACK
5. GARAGE DOORS - BARN LIGHT LARGE - BLACK

INTERIOR SELECTIONS

1

2

3

4

5

1. WALL PAINT- PURE WHITE (SW7005)
2. TRIM PAINT - PURE WHITE (SW7005)
3. FLOORING - LVP -MOHAWK - ARBOR BANKS - ELLIS (1ST FLOOR LIVING AREAS, LAUNDRY, 2ND FLOOR HALL)
4. CARPET -MOHAWK - LUSTROUS TONES - WARM ALMOND (PRIMARY BEDROOM, BED 2 & 3)
5. STAIR STAIN - STAINED TO COORDINATE WITH LVP



INTERIOR LIGHTING

1. FAMILY ROOM - ERA 52" LED /
PRIMARY BEDROOM - ERA 44" LED
2. BED 2 & 3 - RHETT FLUSH MOUNT -
SATIN BRASS
3. DINING ROOM - MOFFETT STREET
LINEAR PENDANT - SATIN BRASS
4. CLOSETS - ROUND CEILING MOUNT -
WHITE



2



3



4



KITCHEN



1. FAUCET/AIRSWITCH BUTTON - DELTA TRINSIC - CHAMPAGNE BRONZE
2. SINK - UNDERMOUNT - STAINLESS STEEL
3. PENDANT LIGHTS - KATE 1-LIGHT SPHERES - SATIN BRASS (X2)
4. COUNTERTOPS- QUARTZ - CARRARA BREVE
5. BACKSPLASH - ESTASI FLAT - 3X12 - WHITE GLOSSY
6. CABINET HARDWARE - TEMPO PULL
7. CABINETS - TIMBERLAKE BARNETT - PAINTED LINEN

4

5

7

6

APPLIANCES

1

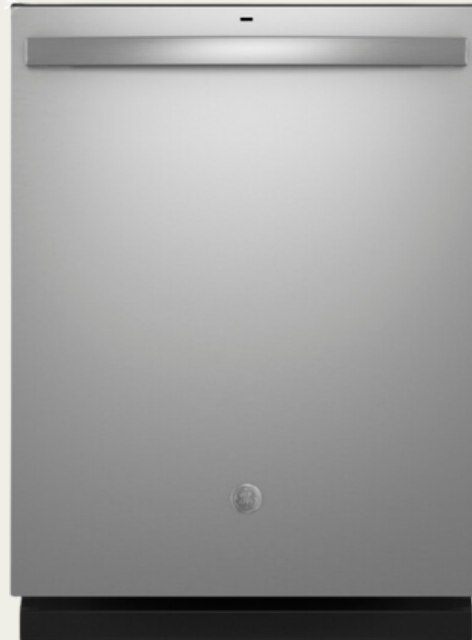


1. MICROWAVE - GE - JVM3162RJSS - STAINLESS STEEL
2. GAS RANGE - GE - GGS500SVSS - STAINLESS STEEL
3. DISHWASHER - GE - GDT635HSRSS - STAINLESS STEEL

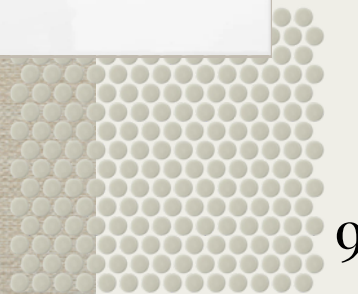
2



3



PRIMARY BATHROOM



1. FAUCET- DELTA TRINSIC - CHAMPAGNE BRONZE - WIDESPREAD (X2)
2. SINK-RECTANGULAR BASIN (X2)
3. BATHROOM LIGHT FIXTURE - MERCER 2-LIGHT - BURNISHED BRASS (X2)
4. CABINETS-TIMBERLAKE BARNETT - PAINTED NAVY
5. COUNTERTOPS- QUARTZ - CARRARA BREVE
6. HARDWARE- TEMPO PULL
7. BATHROOM FLOOR- JUTE 12X24 - IVORY
8. SHOWER WALLS - CATCH 3X12 - ICE GLOSSY
9. SHOWER FLOOR - SAVVY PENNIES - OAT
10. SHOWER FIXTURE - DELTA TRINSIC
11. SHOWER ENCLOSURE - FRAMELESS



BATHROOM TWO



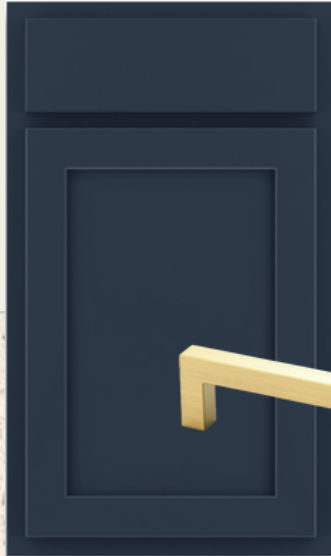
1



3



2



4

6



5



7

- 1. FAUCET- DELTA TRINSIC - CENTERSET (X1)
- 2. SINK-RECTANGULAR BASIN (X1)
- 3. BATHROOM LIGHTING - MERCER 2-LIGHT (X1)
- 4. CABINETS - TIMBERLAKE BARNETT - PAINTED NAVY
- 5. COUNTERTOPS- QUARTZ - BLANCO MAPLE
- 6. HARDWARE - TEMPO PULL
- 7. BATHROOM FLOOR - SILHOUETTE 12X24 - FIGURE
- 8. TUB/SHOWER FIXTURE - DELTA TRINSIC
- 9. TUB- VIKRELL TUB



8



9

POWDER ROOM



3



1. FAUCET- DELTA TRINSIC - CENTERSET
2. BATHROOM LIGHTING - CODYN 2-LIGHT (X1)
3. PEDESTAL SINK - SACRAMENTO - WHITE

TRIMWORK & OTHER SELECTIONS

- BASEBOARDS - OPTIONAL 1X6
- WINDOW CASINGS - OPTIONAL
1X4 LEGS, 1X6 HEADS W/ SILL



- CASED OPENINGS - OPTIONAL
1X4 LEGS, 1X6 HEADS
- DOOR CASINGS - STANDARD
1X4 LEGS, 1X6 HEADS
- STAIRS - STAINED OAK TREADS
W/ PAINTED RISERS
- OPTIONAL EXTENDED REAR
PORCH W/O UTILITY ROOM

