

LOT 1628  
516 IVY GREEN LN

 SAUSSY BURBANK

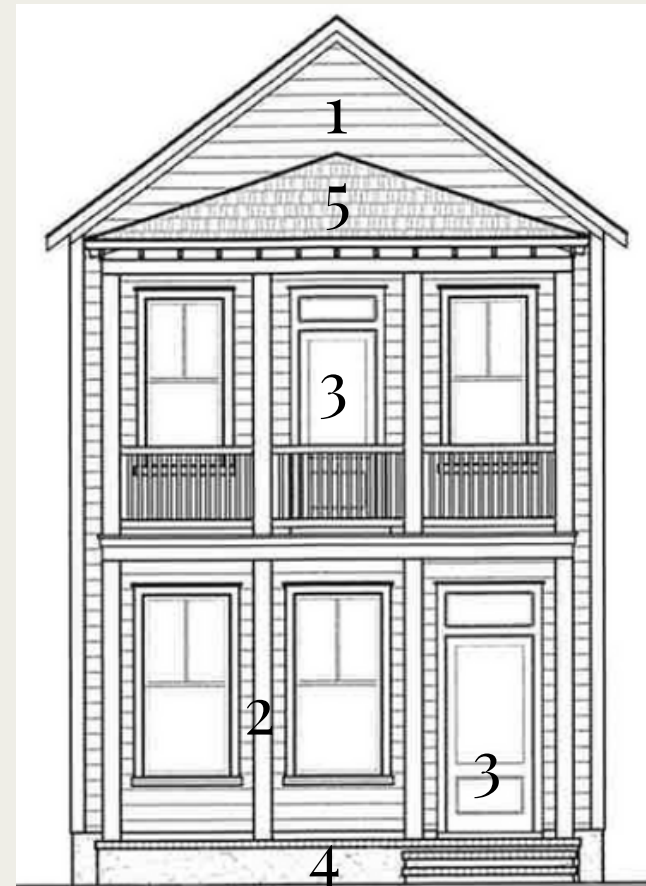
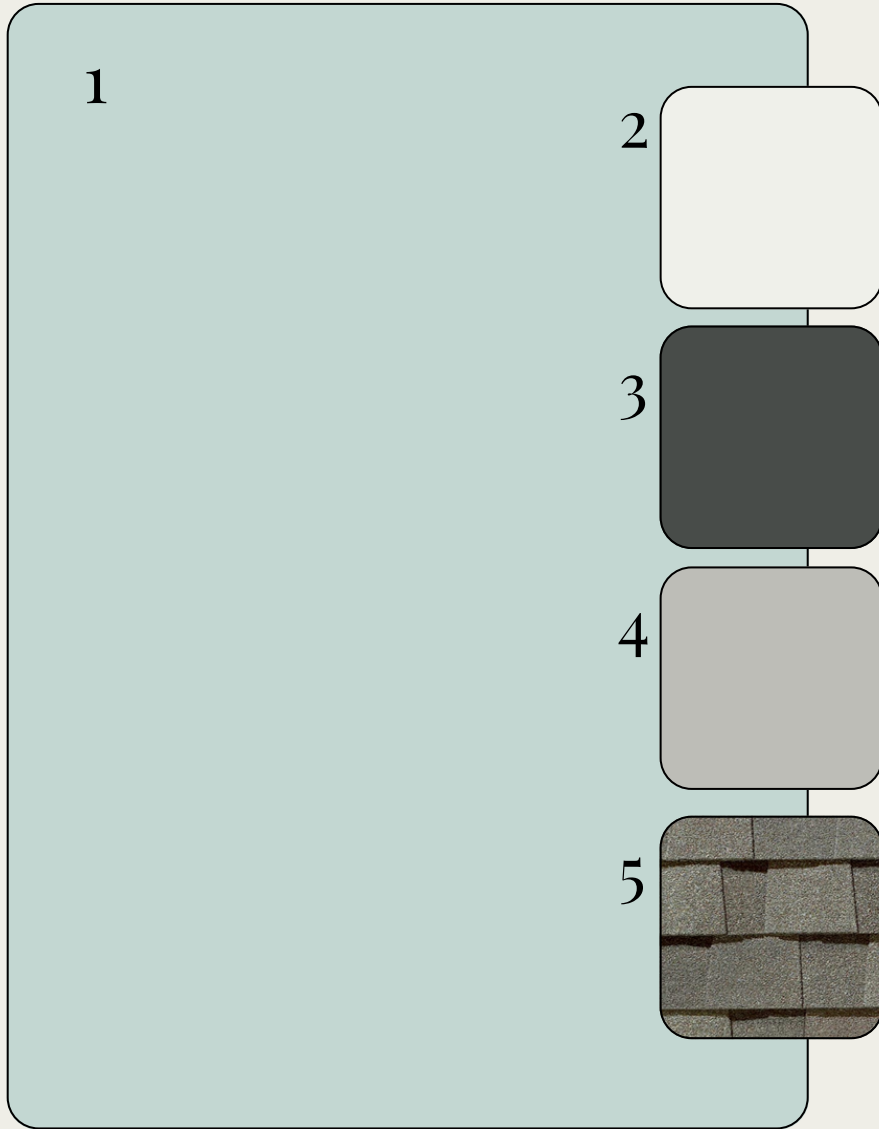


\*OPTIONAL UPGRADES MAY BE SHOWN ON ARTIST'S RENDERING. SEE AGENT FOR DETAILS

ROWAN-P

# EXTERIOR SELECTIONS

1. SIDING - TIDEWATER (SW6477)
2. TRIM- CHARLESTON WHITE (DCR100)
3. FRONT DOORS - ROCK BOTTOM (SW7062)
4. FOUNDATION - ARGOS (SW7065)
5. ROOF - WEATHERED WOOD



# EXTERIOR HARDWARE & LIGHTING

1



2



3



4



5



1. FRONT DOOR HARDWARE - SUTTON - BLACK
2. INTERIOR DOOR HARDWARE - STRATUS KNOB - BLACK
3. REAR DOOR KEYLESS - TOUCH CENTURY - BLACK
4. FRONT & REAR PORCHES - GALENA WALL LANTERN - COPPER
5. GARAGE DOORS - FREDERICKSBURG LARGE WALL LANTERN - COPPER

# INTERIOR SELECTIONS

1

2

3

4

1. WALL PAINT- SNOWBOUND (SW7004)
2. TRIM PAINT - PURE WHITE (SW7005)
3. FLOORING - LVP -MOHAWK - ARBOR BANKS - ELLIS (1ST FLOOR LIVING AREAS, LAUNDRY, 2ND FLOOR HALL)
4. CARPET -MOHAWK - LUSTROUS TONES - TWILIGHT (PRIMARY BEDROOM, BED 2 & 3)

# INTERIOR LIGHTING

1



1. FAMILY ROOM - AVILA 54" LED - SATIN BRASS/WHITE
2. DINING ROOM - THURLO MEDIUM HANGING SHADE - SATIN BRASS
3. CLOSETS - ROUND CEILING MOUNT - WHITE
4. FOYER - CORTES FLUSH MOUNT - SATIN BRASS
5. PRIMARY BED - ERA 52" LED / BED 2&3 - ERA 44" LED

2



3



4



5



# KITCHEN



1

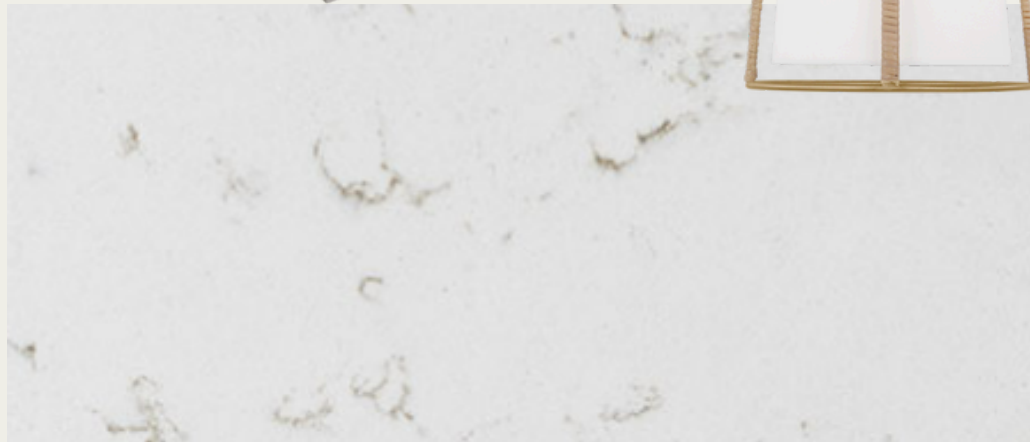


2



3

4



5



1. FAUCET/AIRSWITCH BUTTON - DELTA ANTONI - CHAMPAGNE BRONZE
2. STAINLESS STEEL FARM SINK
3. PENDANT LIGHTS - CORTES MEDIUM HANGING SHADES - SATIN BRASS (X2)
4. COUNTERTOPS- QUARTZ - CARRARA BREVE
5. BACKSPLASH - RAKU - 3X12 - OCEAN GLOSSY
6. CABINET HARDWARE - CUP PULL & STAMPED KNOB
7. CABINETS - TIMBERLAKE BARNETT - PAINTED LINEN (PERIMETER) & MAPLE ALMOND STAIN (ISLAND)

7



6



# APPLIANCES

1

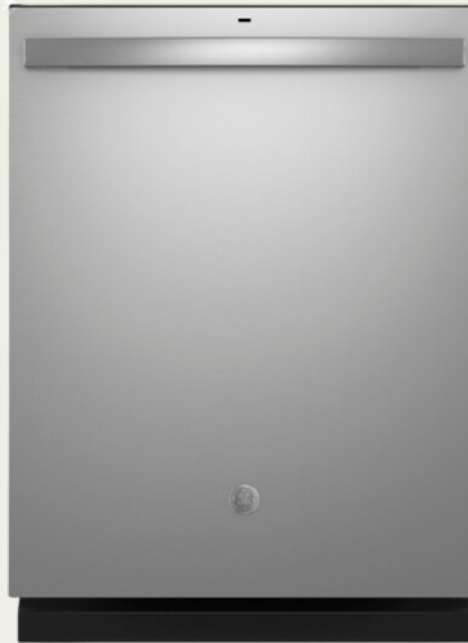


1. HOOD - GE - JVV5301SJSS - STAINLESS STEEL
2. GAS RANGE - GE - GGS500SVSS - STAINLESS STEEL
3. DISHWASHER - GE - GDT635HSRSS - STAINLESS STEEL
4. MICROWAVE (UNDER-COUNTER) - SHARP - SMD2470ASY - STAINLESS STEEL

2



3



4



# PRIMARY BATHROOM



1. FAUCET- DELTA TRINSIC - CHAMPAGNE BRONZE - WIDESPREAD (X2)
2. SINK-RECTANGULAR BASIN (X2)
3. BATHROOM LIGHT FIXTURE - MERCER 2-LIGHT - BURNISHED BRASS (X2)
4. CABINETS-TIMBERLAKE BARNETT - MAPLE ALMOND STAINED
5. COUNTERTOPS- QUARTZ - CARRARA BREVE
6. HARDWARE- TEMPO PULL
7. BATHROOM FLOOR- JUTE 12X24 - IVORY
8. SHOWER WALLS - INHALE 4X12 - BLANCO
9. SHOWER FIXTURE - DELTA TRINSIC
10. SHOWER ENCLOSURE - FRAMELESS



# BATHROOM TWO



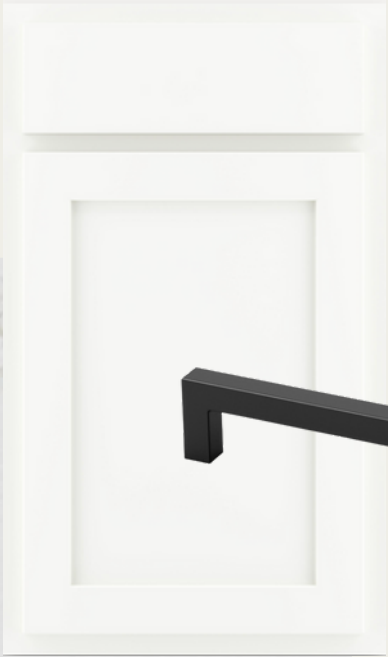
1



3



2



4



5

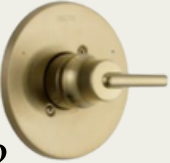


6



7

- 1. FAUCET- DELTA TRINSIC - CENTERSET (X1)
- 2. SINK-RECTANGULAR BASIN (X1)
- 3. BATHROOM LIGHTING - CAFE 2-LIGHT (X1)
- 4. CABINETS - TIMBERLAKE BARNETT - PAINTED LINEN
- 5. COUNTERTOPS- QUARTZ - BLANCO MAPLE
- 6. HARDWARE - TEMPO PULL
- 7. BATHROOM FLOOR - JUTE 12X24 - IVORY
- 8. TUB/SHOWER FIXTURE - DELTA TRINSIC
- 9. TUB- VIKRELL TUB



8



9

# POWDER ROOM

1



2



3



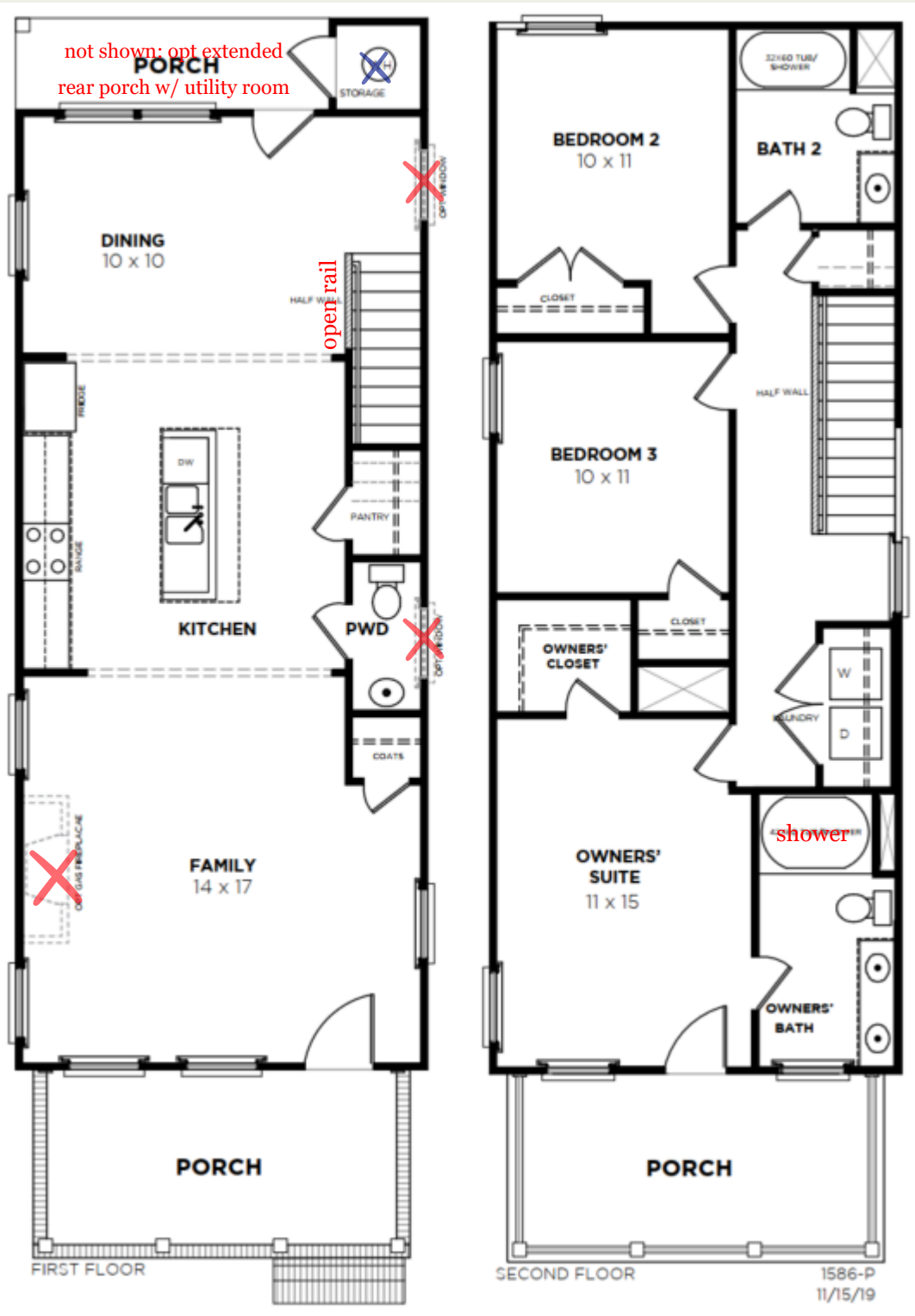
1. FAUCET- DELTA TRINSIC - SINGLE
2. BATHROOM LIGHTING - LANDO 2-LIGHT (X1)
3. PEDESTAL SINK - SACRAMENTO - WHITE

# TRIMWORK & OTHER SELECTIONS

- BASEBOARDS - OPTIONAL 1X6
- WINDOW CASINGS - OPTIONAL  
1X4 LEGS, 1X6 HEADS W/ SILL



- CASED OPENINGS - OPTIONAL  
1X4 LEGS, 1X6 HEADS
- DOOR CASINGS - STANDARD  
1X4 LEGS, 1X6 HEADS
- STAIRS - STAINED OAK TREADS  
W/ PAINTED RISERS
- OPTIONAL EXTENDED REAR  
PORCH W/ UTILITY ROOM



not shown: opt extended rear porch w/ utility room

PORCH

STORAGE

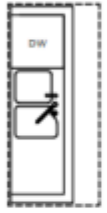
DOWN

DINING  
10 x 10

open rail

HALF WALL

PANTRY



KITCHEN

PWD

COATS

GAS FIREPLACE

FAMILY  
14 x 17

PORCH

FIRST FLOOR

BEDROOM 2  
10 x 11

BATH 2

HALF WALL

BEDROOM 3  
10 x 11

OWNERS' CLOSET

OWNERS' SUITE  
11 x 15

shower

OWNERS' BATH

PORCH

SECOND FLOOR

1586-P  
11/15/19