

LOT 7
1075 MILFORD WAY

 SAUSSY BURBANK

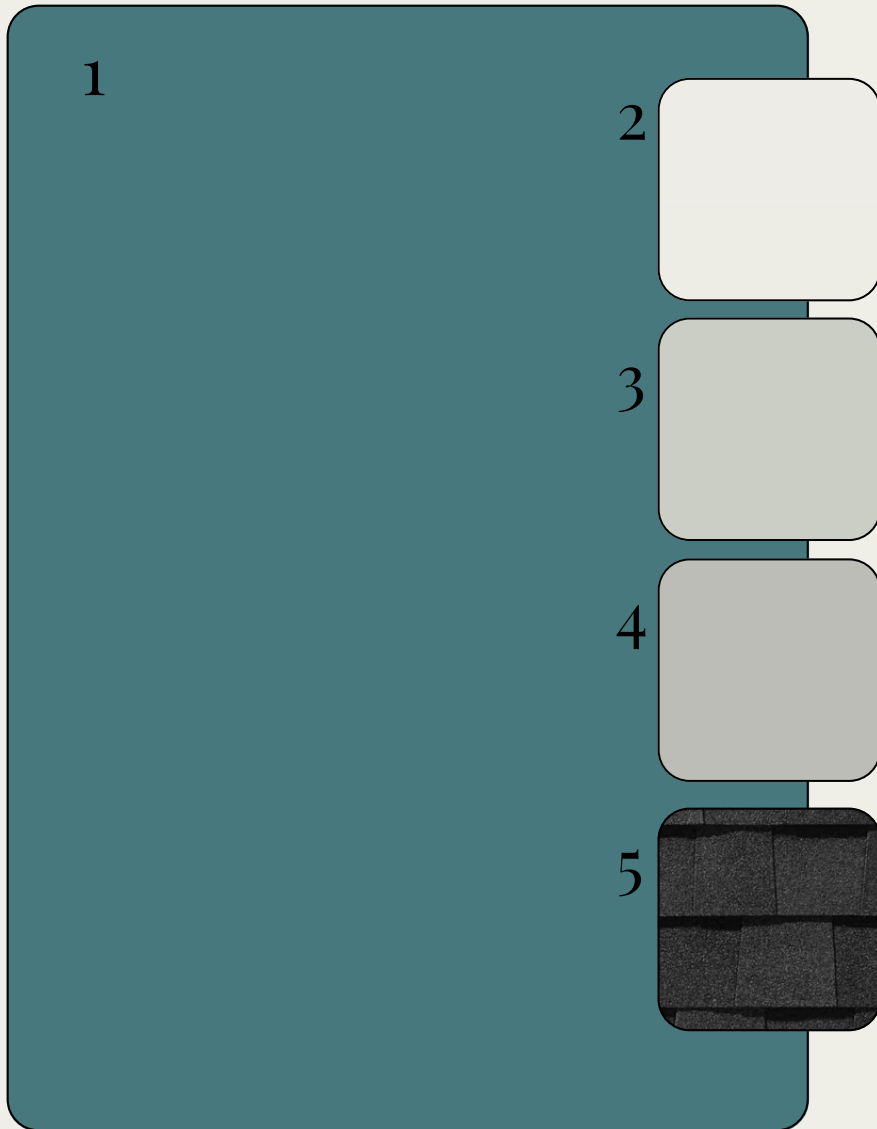


*OPTIONAL UPGRADES MAY BE SHOWN ON ARTIST'S RENDERING. SEE AGENT FOR DETAILS

SWINTON-O

EXTERIOR SELECTIONS

1. SIDING - GRAND CANAL (SW6488)
2. TRIM - PURE WHITE (SW7005)
3. FRONT DOOR- PEARL GREY (SW0052)
4. FOUNDATION - ARGOS (SW7065)
5. ROOF - MOIRE BLACK



*colors may vary on screen or printed versions

EXTERIOR HARDWARE & LIGHTING

1



2



3



4



5



6



1. FRONT DOOR HARDWARE - SUTTON - BLACK
2. INTERIOR DOOR HARDWARE - STRATUS KNOB - BLACK
3. REAR DOOR KEYLESS - TOUCH CENTURY - BLACK
4. FRONT DOOR - VADO 1-LIGHT OUTDOOR PENDANT - BLACK
5. REAR PORCH & GARAGE ENTRY - VADO MEDIUM WALL LANTERN - BLACK
6. GARAGE DOORS - BARN LIGHT LARGE - BLACK

INTERIOR SELECTIONS

1

2



3



4



1. WALL & TRIM PAINT- PURE WHITE (SW7005)
2. FLOORING - ENGINEERED HARDWOOD -MOHAWK - CASPIAN SHORES - SAWGRASS OAK (1ST FLOOR LIVING AREAS, PRIMARY BED, LOFT)
3. CARPET -MOHAWK - LUSTROUS TONES - ISLAND TAPUE (BED 2, 3 & 4)
4. LAUNDRY FLOOR TILE - NOBLEZA 12X24 - ASTORGA MATTE

INTERIOR LIGHTING

1. FAMILY ROOM, PRIMARY BED, LOFT - JOVIE 52" CEILING FAN - WHITE
2. FOYER - BEATRIX MEDIUM SEMI-FLUSH MOUNT - AGED IRON
3. DINING ROOM - BRIANNA SMALL CHANDELIER - AGED IRON
4. CLOSETS/HALLS - ROUND CEILING MOUNT - WHITE
5. STAIRWELL LANDING - SARITA SMALL SCONCES (X2) - BLACK
6. LAUNDRY - LARSON FLUSH MOUNT - MATTE WHITE



KITCHEN

1. FAUCET - DELTA MONROVIA - MATTE BLACK
2. KOHLER FARM SINK - WHITE CAST IRON
3. PENDANT LIGHTS - LEO HANGING GLOBE
LARGE PENDANTS - BLACK/CLEAR SEEDED
GLOBE (X2)
4. COUNTERTOPS- QUARTZ - BLANCO MAPLE
5. BACKSPLASH - COGNITO HERRINGBONE - ICE
MATTE (EXTENDED TO CEILING AT HOOD)
6. CABINET HARDWARE - TEMPO PULL
7. CABINETS - TIMBERLAKE BARNETT - PAINTED
HARBOR



1



2

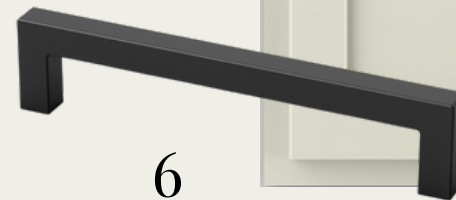
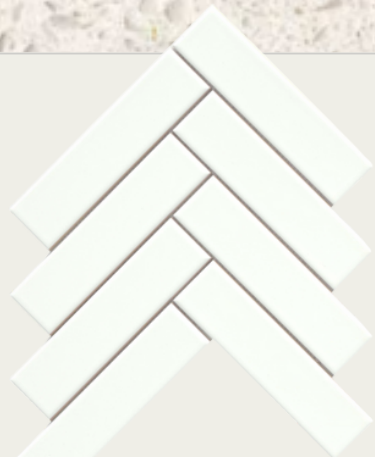


3



4

5



6



7

APPLIANCES

1



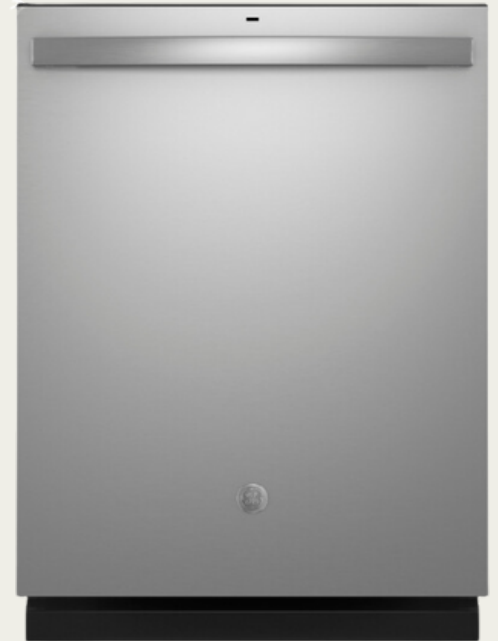
2



3

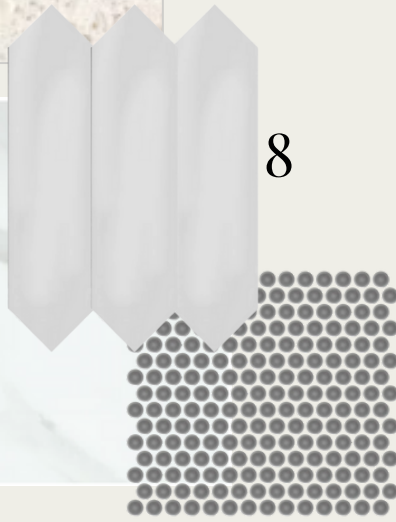
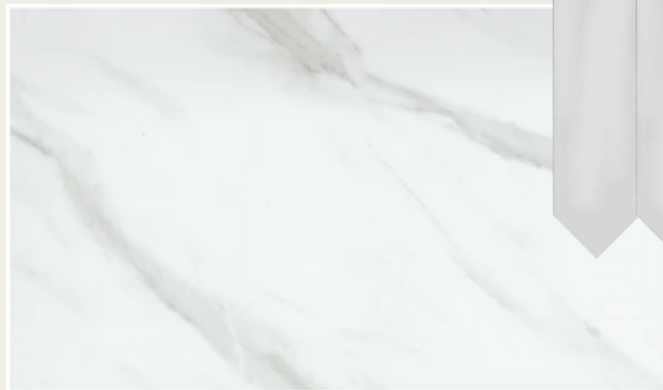


4



1. HOOD - GE - JVV5361SJSS - STAINLESS STEEL
2. GAS COOKTOP - GE PROFILE - JGP5036SLSS - STAINLESS STEEL
3. WALL OVEN - GE - JT3800SHSS - STAINLESS STEEL
4. DISHWASHER - GE - GDT635HSRSS - STAINLESS STEEL

PRIMARY BATHROOM



1. FAUCET- DELTA SAYLOR - MATTE BLACK - WIDESPREAD (X2)
2. SINK-RECTANGULAR BASIN (X2)
3. BATHROOM LIGHTING - LANDO 3-LIGHT (X2) - BLACK
4. CABINETS-TIMBERLAKE BARNETT - PAINTED HARBOR
5. COUNTERTOPS- QUARTZ - BLANCO MAPLE
6. HARDWARE - TEMPO PULL
7. BATHROOM FLOOR - NOBLEZA 12X24 - ASTORGA MATTE
8. SHOWER WALLS - CRAFT II PICKET - WHITE GLOSSY
9. SHOWER FLOOR - SAVVY PENNIES - SILVER
10. HANDHELD SHOWER HEAD / TUB FILLER
11. FREESTANDING TUB - STERLING SPECTACLE
12. SHOWER ENCLOSURE - FRAMELESS



BATHROOM TWO



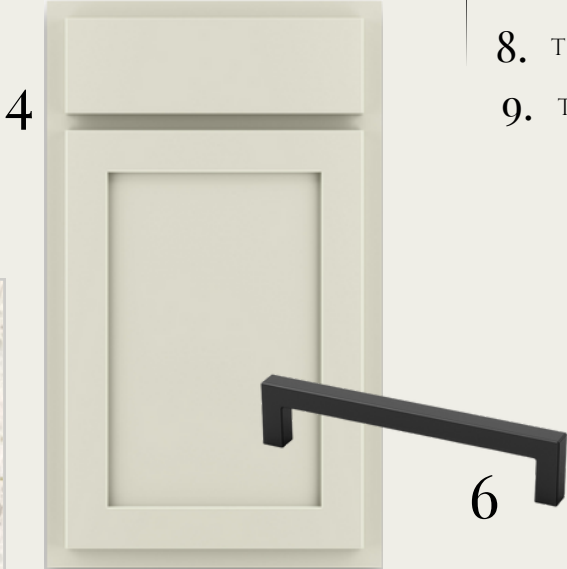
1



3



2



4

6



5



7



8



9

- 1. FAUCET- DELTA SAYLOR - SINGLE
- 2. SINK - RECTANGULAR BASIN (X2)
- 3. BATHROOM LIGHTING - LANDO 3-LIGHT - BLACK
- 4. CABINETS - TIMBERLAKE BARNETT - PAINTED HARBOR
- 5. COUNTERTOPS- QUARTZ - BLANCO MAPLEI
- 6. HARDWARE - TEMPO PULL
- 7. BATHROOM FLOOR - BROOK II - 12X24 - WHITE
- 8. TUB/SHOWER FIXTURE - DELTA SAYLOR
- 9. TUB- VIKRELL TUB

BATHROOM TWO



1



3



2



4



6



5



7



8



9

- 1. FAUCET- DELTA SAYLOR - SINGLE
- 2. SINK - RECTANGULAR BASIN
- 3. BATHROOM LIGHTING - LANDO 2-LIGHT - BLACK
- 4. CABINETS - TIMBERLAKE BARNETT - PAINTED HARBOR
- 5. COUNTERTOPS- QUARTZ - BLANCO MAPLEI
- 6. HARDWARE - TEMPO PULL
- 7. BATHROOM FLOOR - BROOK II - 12X24 - WHITE
- 8. TUB/SHOWER FIXTURE - DELTA SAYLOR
- 9. TUB- VIKRELL TUB

POWDER ROOM

1



2



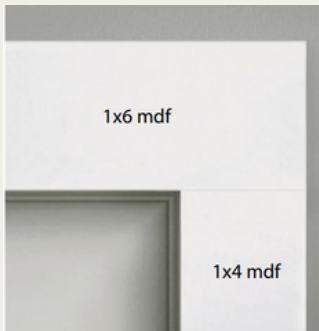
1. FAUCET- DELTA SAYLOR - SINGLE
2. BATHROOM LIGHTING - LANDO 2-LIGHT
3. PEDESTAL SINK - SACRAMENTO - WHITE

3



TRIMWORK & OTHER SELECTIONS

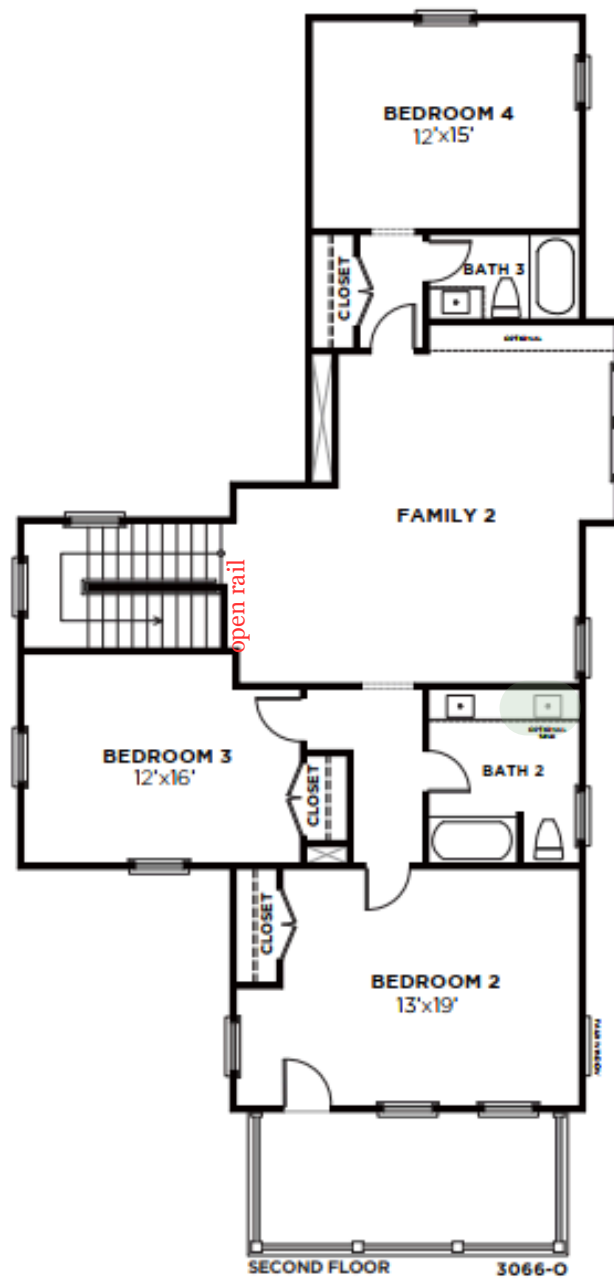
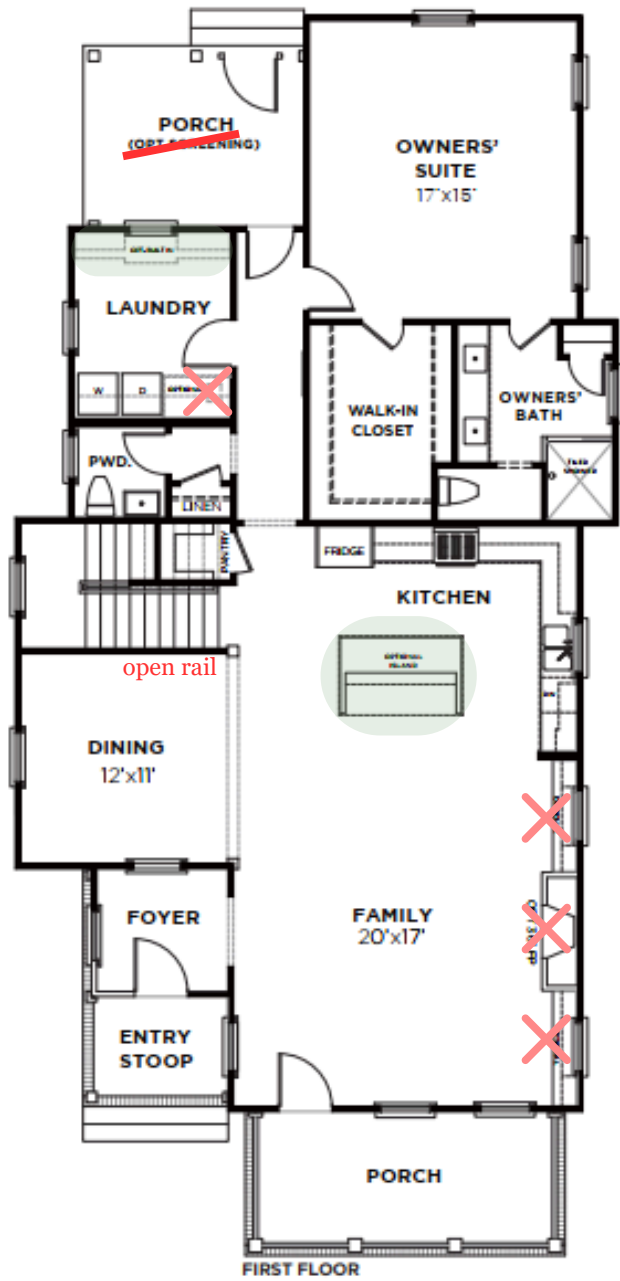
- BASEBOARDS - OPTIONAL 1X6
- WINDOW CASINGS - OPTIONAL
1X4 LEGS, 1X6 HEADS W/ SILL



- DOOR CASINGS - STANDARD
1X4 LEGS, 1X6 HEADS
- STAIRS - STAINED OAK TREADS
W/ PAINTED RISERS
- OPTIONAL 2ND SINK IN BATH 2

- OPTIONAL PRIMARY BATH
LAYOUT (FREESTANDING TUB
W/ TILED SHOWER)
- GOURMET KITCHEN LAYOUT
- OPTIONAL KITCHEN ISLAND
- LAUNDRY DROP-ZONE BENCH





3066-O
6/26/25