

LOT 75
738 MACON ALLEY

 SAUSSY BURBANK

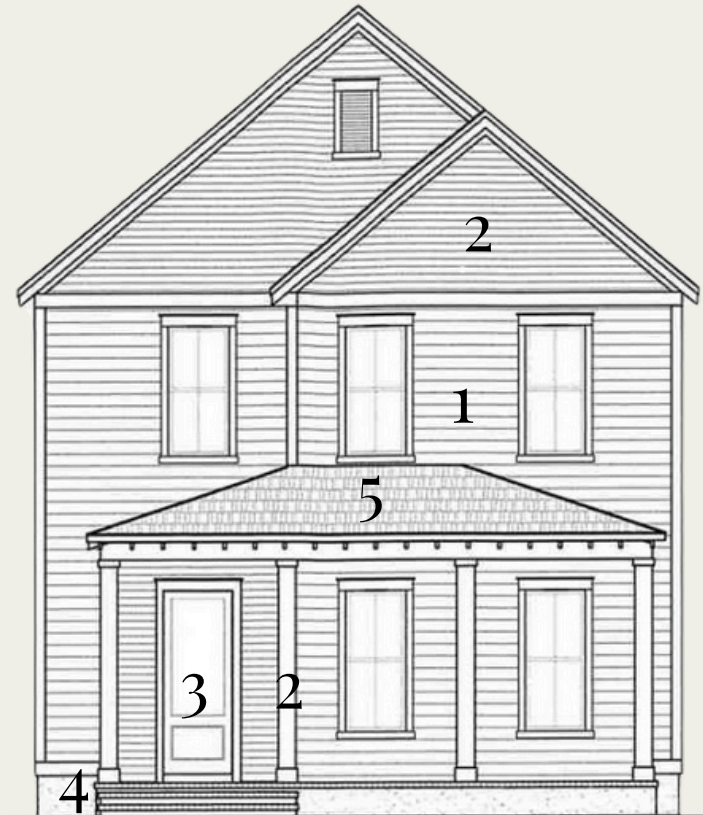
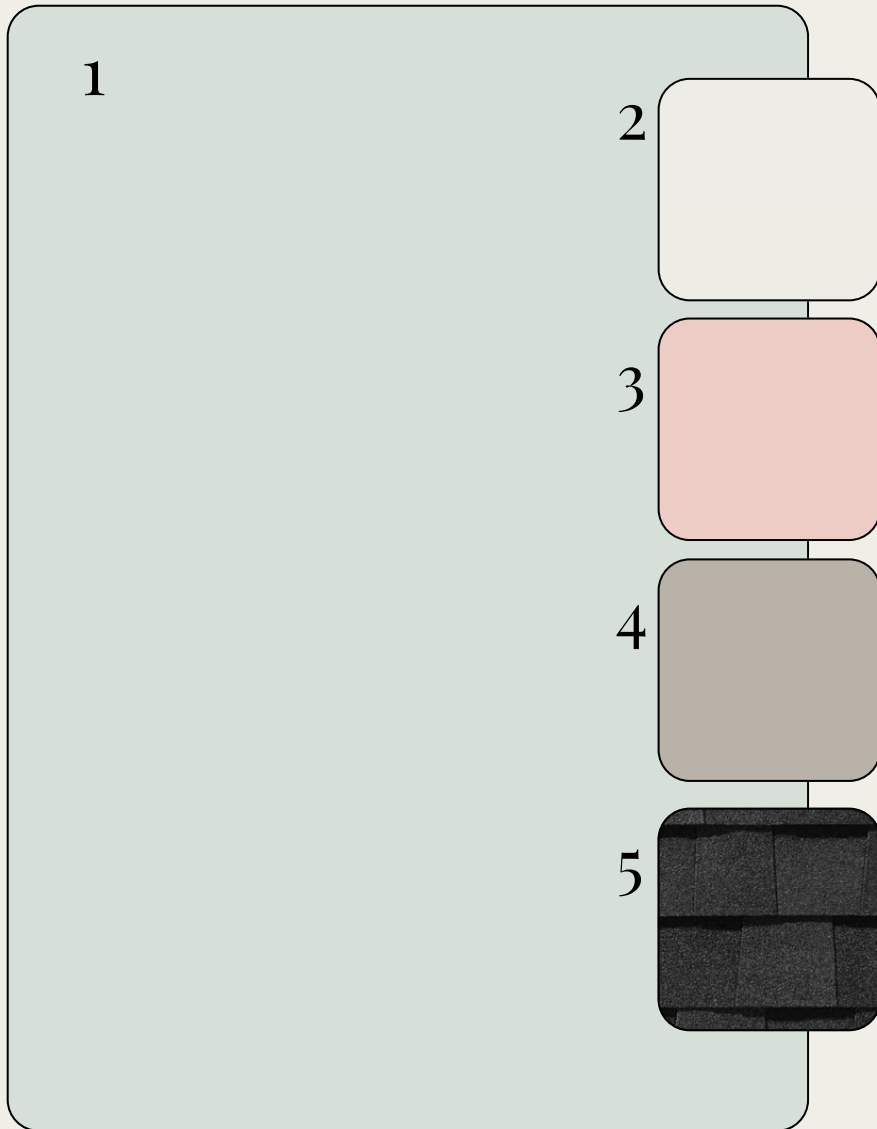


*OPTIONAL UPGRADES MAY BE SHOWN ON ARTIST'S RENDERING. SEE AGENT FOR DETAILS

BANBURY-N

EXTERIOR SELECTIONS

1. SIDING - WINDOW PANE (SW6210)
2. TRIM- PURE WHITE (SW7005)
3. FRONT DOOR- OLEANDER (SW6603)
4. FOUNDATION - REQUISITE GREY (SW7023)
5. ROOF- MOIRE BLACK



*colors may vary on screen or printed versions

EXTERIOR HARDWARE & LIGHTING

1



2



3



4



5



6



1. FRONT DOOR HARDWARE - SUTTON - BLACK
2. INTERIOR DOOR HARDWARE - STRATUS KNOB - BLACK
3. REAR DOOR KEYLESS - TOUCH CENTURY - BLACK
4. FRONT DOOR - WARREN MEDIUM WALL LANTERN - BLACK
5. REAR PORCH - WARREN SMALL WALL LANTERN - BLACK
6. GARAGE DOORS - BARN LIGHT LARGE - BLACK

INTERIOR SELECTIONS

1

2

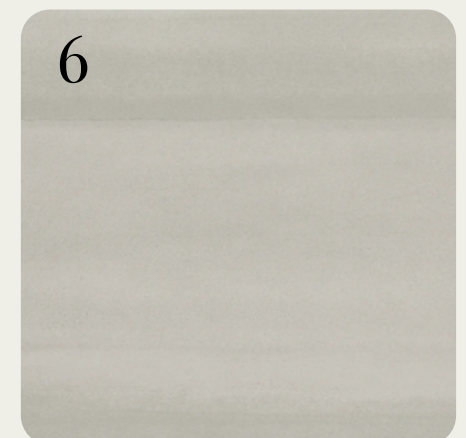
3

4

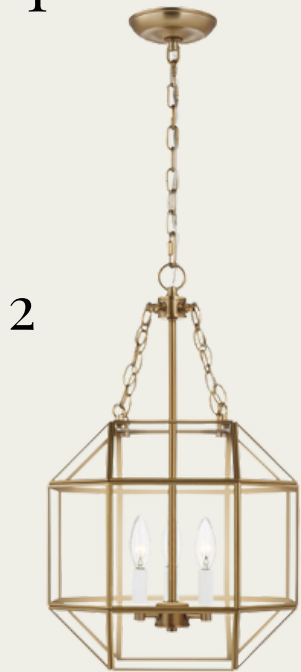
5

6

1. WALL PAINT - PURE WHITE (SW7005)
2. TRIM PAINT - PURE WHITE (SW7005)
3. FLOORING - ENGINEERED HARDWOOD - MOHAWK - RESTORATION OPULENCE - NATURAL OAK (1ST FLOOR LIVING AREAS, PRIMARY BED, 2ND FLOOR HALL/LOFT)
4. CARPET - MOHAWK - LUSTROUS TONES - WARM ALMOND (BED 2 & 3)
5. STAIR STAIN - HEIRLOOM OAK (MW441)
6. LAUNDRY FLOOR TILE - SILHOUETTE 12X24 - FIGURE



INTERIOR LIGHTING



1. FAMILY ROOM, PRIMARY BEDROOM - AVILA 54" LED CEILING FAN - SATIN BRASS/WHITE
2. FOYER - MORRISON SMALL 3-LIGHT LANTERN - SATIN BRASS/CLEAR GLASS
3. DINING ROOM - FOXDALE 5-LIGHT CHANDELIER - SATIN BRASS
4. CLOSETS - ROUND CEILING MOUNT - WHITE
5. BED 2 & 3, LOFT, LAUNDRY - RHETT FLUSH MOUNT - SATIN BRASS
6. REAR HALLWAY - DIANNA MINI LANTERN - SATIN BRASS
7. STAIRWELL LANDING - DIANNA MEDIUM LANTERN - SATIN BRASS

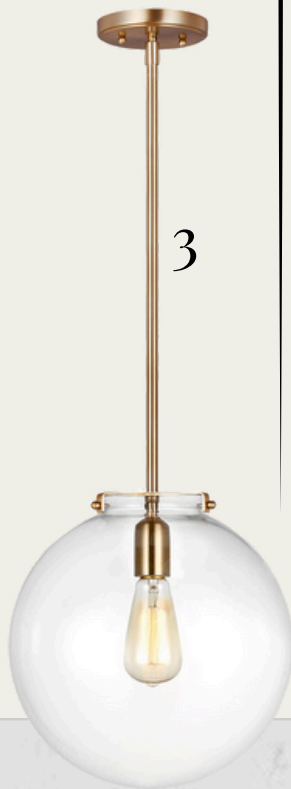
KITCHEN



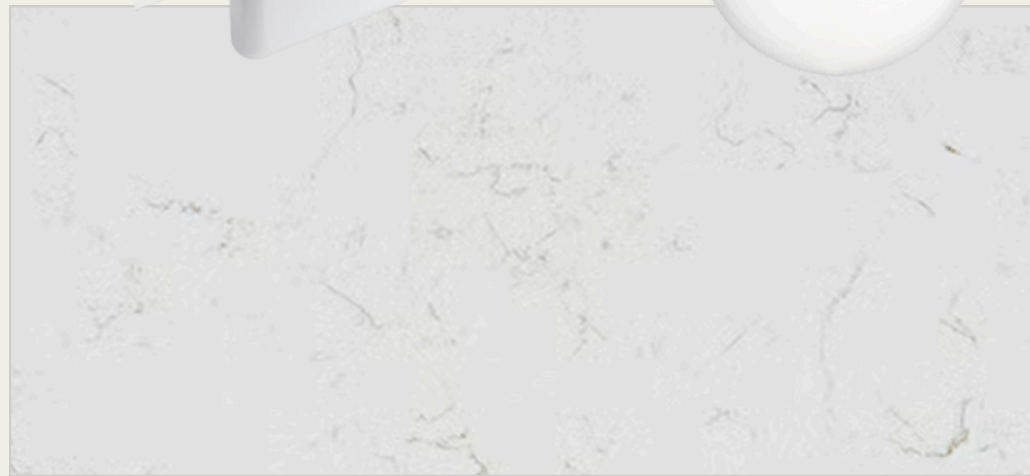
1



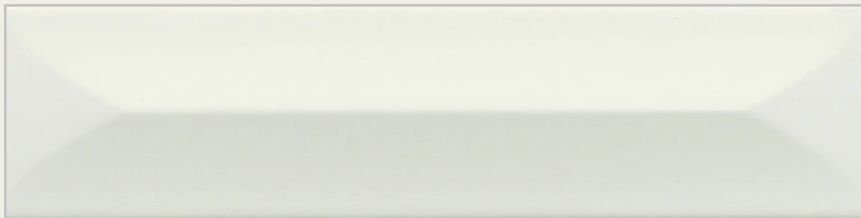
2



3



4



5



7

6



1. FAUCET - DELTA CASSIDY - CHAMPAGNE BRONZE
2. SINK - KOHLER FARM SINK - WHITE CAST IRON
3. PENDANT LIGHTS - KATE 1-LIGHT SPHERES SATIN BRASS (X2)
4. COUNTERTOPS- QUARTZ - MIAMI ORO
5. BACKSPLASH - CATCH 3X12 - ICE GLOSSY (EXTENDED TO CEILING AT HOOD)
6. CABINET HARDWARE - RADIANT PULL
7. CABINETS - TIMBERLAKE BARNETT - PERIMETER: PAINTED LINEN / ISLAND: PAINTED NAVY

APPLIANCES

1



2



3



4



1. HOOD - GE - JYW5361SJSS - STAINLESS STEEL
2. GAS COOKTOP - GE PROFILE - PGP7036SLSS - STAINLESS STEEL
3. WALL OVEN - GE - JT3800SHSS - STAINLESS STEEL
4. DISHWASHER - GE - GDT635HSRSS - STAINLESS STEEL

PRIMARY BATHROOM



1

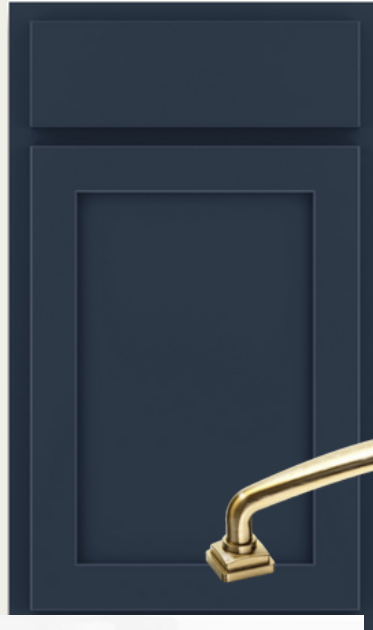


3



2

4

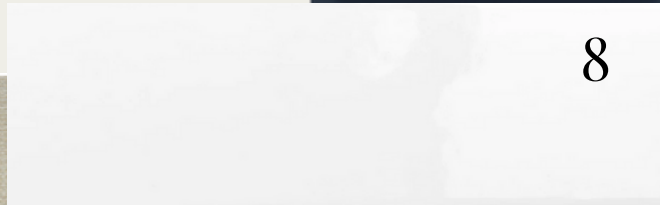


5

6

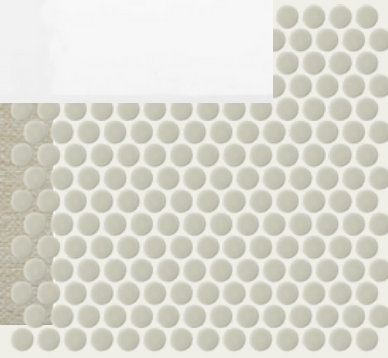


11



8

9



10



7



1. FAUCET- DELTA CASSIDY -CHAMPAGNE BRONZE - WIDESPREAD (X2)
2. SINK-RECTANGULAR BASIN (X2)
3. BATHROOM LIGHTING - HARTLEY 2-LIGHT (X2) - BURNISHED BRASS
4. CABINETS-TIMBERLAKE BARNETT - PAINTED NAVY
5. COUNTERTOPS- QUARTZ - BLANCO MAPLE
6. HARDWARE- RADIANT PULL
7. BATHROOM FLOOR- JUTE 12X24 - IVORY
8. SHOWER WALLS - CATCH 4X16 - ICE GLOSSY
9. SHOWER FLOOR - SAVVY PENNIES - OAT
10. SHOWER FIXTURE - DELTA CASSIDY
11. SHOWER ENCLOSURE - FRAMELESS

BATHROOM TWO



1



3



2



4



5



6



7



9

8

- 1. FAUCET- DELTA CASSIDY - SINGLE
- 2. SINK - RECTANGULAR BASIN
- 3. BATHROOM LIGHTING - HARTLEY 2-LIGHT - BURNISHED BRASS
- 4. CABINETS - TIMBERLAKE BARNETT - PAINTED LINEN
- 5. COUNTERTOPS- QUARTZ - BLANCO MAPLEI
- 6. HARDWARE - RADIANT PULL
- 7. BATHROOM FLOOR - JUTE 12X24 - IVORY
- 8. TUB/SHOWER FIXTURE - DELTA CASSIDY
- 9. TUB- VIKRELL TUB

POWDER ROOM

1



2



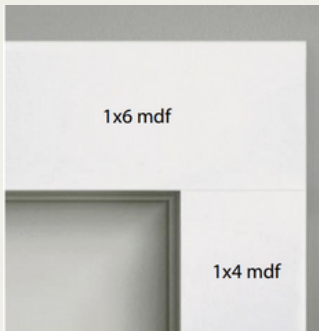
3



1. FAUCET- DELTA CASSIDY - SINGLE
2. BATHROOM LIGHTING - EMILE MEDIUM
VANITY LIGHT - SATIN BRASS
3. PEDESTAL SINK - SACRAMENTO -
WHITE

TRIMWORK & OTHER SELECTIONS

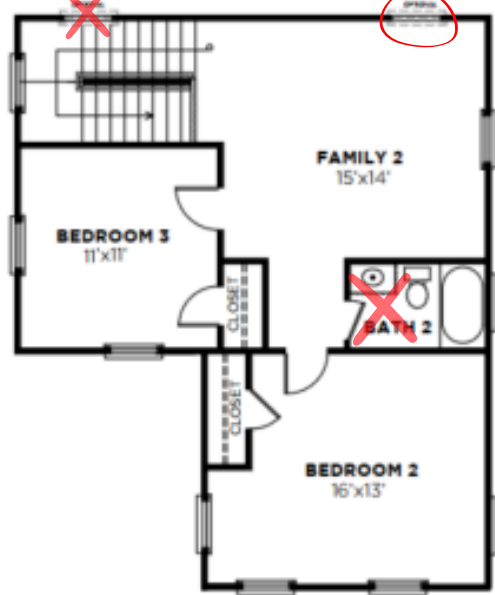
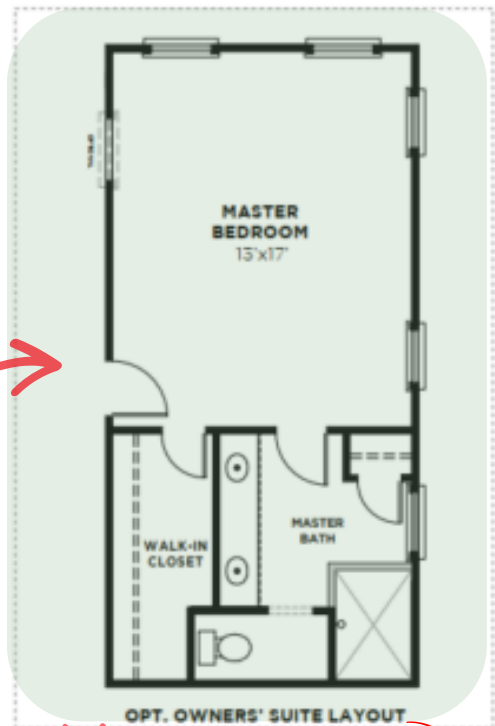
- BASEBOARDS - OPTIONAL 1X6
- WINDOW CASINGS - OPTIONAL
1X4 LEGS, 1X6 HEADS W/ SILL



- DOOR CASINGS - STANDARD
1X4 LEGS, 1X6 HEADS
- STAIRS - STAINED OAK TREADS
W/ PAINTED RISERS
- OPTIONAL EXPANDED BATH 2
(W/ 2ND SINK)

- ALT 1ST FLOOR PRIMARY
BEDROOM LAYOUT
- GOURMET KITCHEN LAYOUT
- OPTIONAL KITCHEN ISLAND
- LAUNDRY DROP-ZONE BENCH





SECOND FLOOR 2247N-THE BANBURY 05/06/22

reverse