

LOT 84  
1587 SAYEBROOK PKWY

 SAUSSY BURBANK

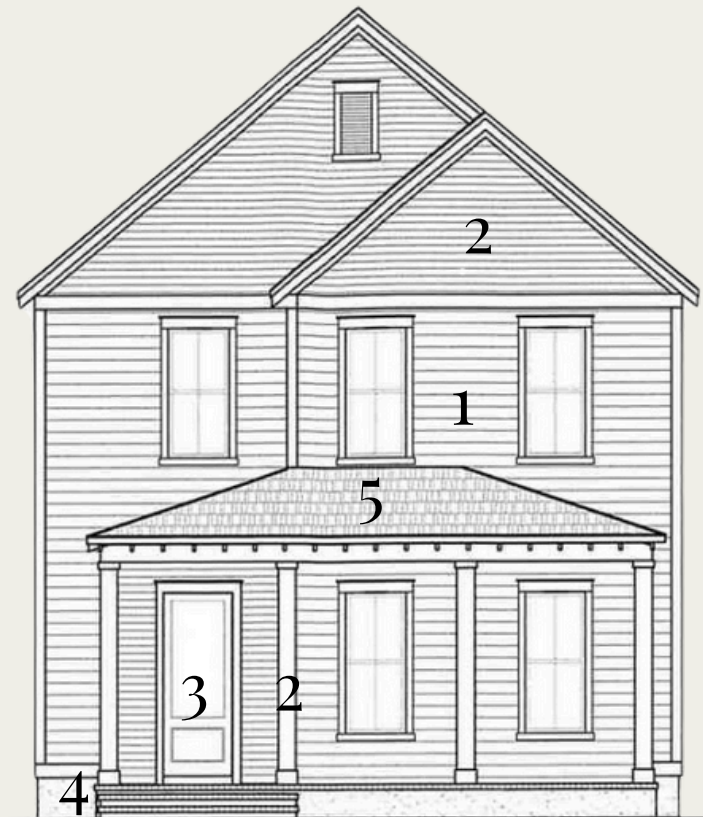
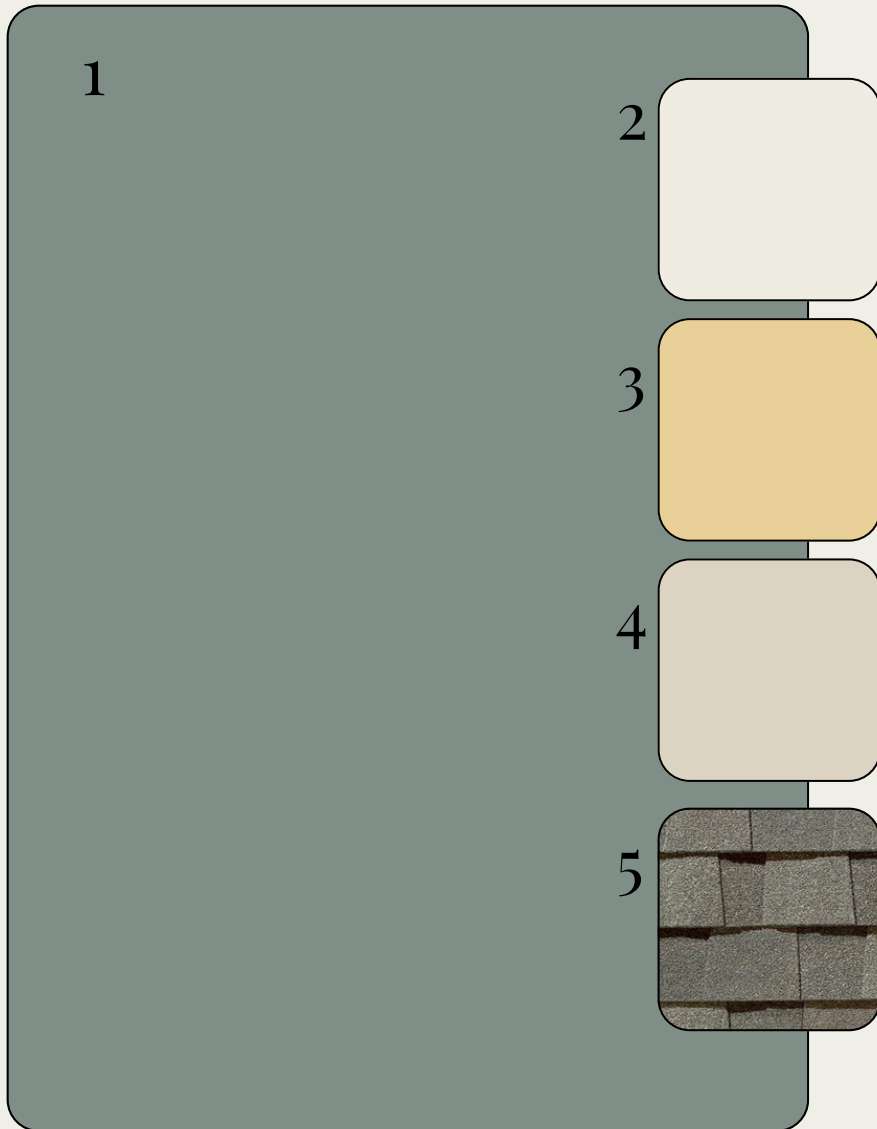


\*OPTIONAL UPGRADES MAY BE SHOWN ON ARTIST'S RENDERING. SEE AGENT FOR DETAILS

BANBURY-NR

# EXTERIOR SELECTIONS

1. SIDING - UNDERSEAS (SW6214)
2. TRIM- GREEK VILLA (SW7551)
3. FRONT DOOR- PEACE YELLOW (SW2857)
4. FOUNDATION - NATURAL LINEN (SW9109)
5. ROOF- WEATHERED WOOD



\*colors may vary on screen or printed versions

# EXTERIOR HARDWARE & LIGHTING

1



2



3



1. FRONT DOOR HARDWARE - SUTTON - BLACK
2. INTERIOR DOOR HARDWARE - STRATUS KNOB - BLACK
3. REAR DOOR KEYLESS - TOUCH CENTURY - BLACK
4. FRONT DOOR - GALENA MEDIUM WALL LANTERN - BLACK
5. REAR PORCH - GALENA SMALL WALL LANTERN - BLACK
6. GARAGE DOORS - BARN LIGHT LARGE - BLACK

4



5



6



# INTERIOR SELECTIONS

1

2

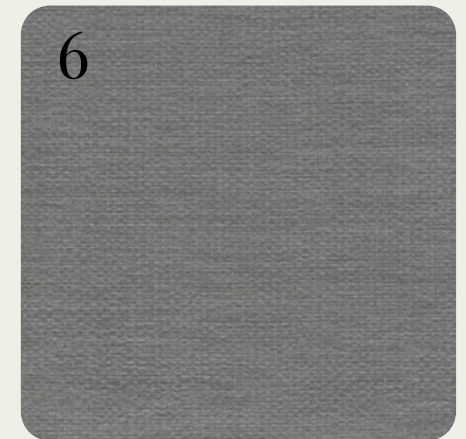
3

4

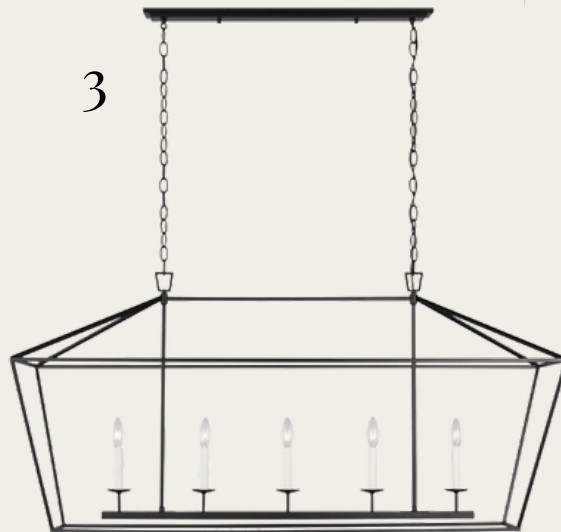
5

6

1. WALL PAINT- PURE WHITE (SW7005)
2. TRIM PAINT - PURE WHITE (SW7005)
3. FLOORING - ENGINEERED HARDWOOD -MOHAWK - CASPIAN SHORES - SANDALWOOD OAK (1ST FLOOR LIVING AREAS, ALT PRIMARY BED, 2ND FLOOR HALL/LOFT)
4. CARPET -MOHAWK - CHARMING TONES - GREIGE (BED 2 & 3)
5. STAIR STAIN - AMBER PINE (MW433)
6. LAUNDRY FLOOR TILE - JUTE 12X24 - GREY



# INTERIOR LIGHTING



1. FAMILY ROOM, PRIMARY BEDROOM - JOVIE 52" CEILING FAN - WHITE / 2ND FLOOR FAMILY - 44" JOVIE
2. FOYER - DIANNA 4-LIGHT MEDIUM LANTERN - BLACK
3. DINING ROOM - DIANNA MEDIUM LINEAR - BLACK
4. CLOSETS - ROUND CEILING MOUNT - WHITE
5. BED 2 & 3 - ASHER FLUSH MOUNT - BLACK
6. LAUNDRY - VANDER MEDIUM FLUSH MOUNT - BLACK
7. REAR HALLWAY - GEREON 2-LIGHT SEMI-FLUSH CONVERTIBLE PENDANT - BLACK

# KITCHEN



1



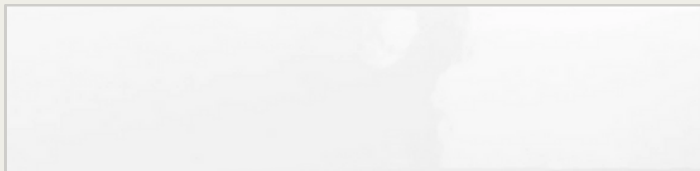
2



3



4



5

1. FAUCET - DELTA MONROVIA - MATTE BLACK
2. SINK - KOHLER FARM SINK - WHITE CAST IRON
3. PENDANT LIGHTS - KATE 1-LIGHT SPHERES - BLACK (X2)
4. COUNTERTOPS- QUARTZ - CARRARA MARMI
5. BACKSPLASH - CATCH 3X12 - ICE GLOSSY (EXTENDED TO CEILING AT HOOD)
6. CABINET HARDWARE - ANTIC PULL & KNOB
7. CABINETS - TIMBERLAKE BARNETT - PAINTED LINEN



6



7

# APPLIANCES

1



2



3

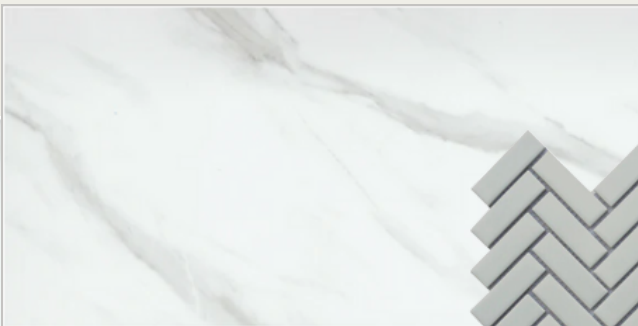


4



1. HOOD - GE - JYW5361SJSS - STAINLESS STEEL
2. GAS COOKTOP - GE PROFILE - PGP7036SLSS - STAINLESS STEEL
3. WALL OVEN - GE - JT3800SHSS - STAINLESS STEEL
4. DISHWASHER - GE - GDT635HSRSS - STAINLESS STEEL

# PRIMARY BATHROOM



1. FAUCET- DELTA SAYLOR - MATTE BLACK - WIDESPREAD (X2)
2. SINK-RECTANGULAR BASIN (X2)
3. BATHROOM LIGHTING - SAYWARD 2-LIGHT (X2) - BLACK
4. CABINETS-TIMBERLAKE BARNETT - PAINTED LINEN
5. COUNTERTOPS- QUARTZ - CARRARA MARMI
6. HARDWARE- ANTIC PULL
7. BATHROOM FLOOR- NOBLEZA 12X24 - ASTORGA MATTE
8. SHOWER WALLS - NOBLEZA 12X24 - ASTORGA POLISHED
9. SHOWER FLOOR - IMPACT HERRINGBONE - GREY
10. SHOWER FIXTURE - DELTA SAYLOR
11. SHOWER ENCLOSURE - FRAMELESS

# BATHROOM TWO

- 1. FAUCET- DELTA SAYLOR - CENTERSET
- 2. SINK - RECTANGULAR BASIN
- 3. BATHROOM LIGHTING - SAYWARD 2-LIGHT - BLACK
- 4. CABINETS - TIMBERLAKE BARNETT - PAINTED LINEN
- 5. COUNTERTOPS- QUARTZ - CARRARA MARMI
- 6. HARDWARE - ANTIC PULL
- 7. BATHROOM FLOOR - NOBLEZA 12X24 - ASTORGA MATTE
- 8. TUB/SHOWER FIXTURE - DELTA SAYLOR
- 9. TUB- VIKRELL TUB



1



3



2



4



5



6



7



9



8



# POWDER ROOM

1



2



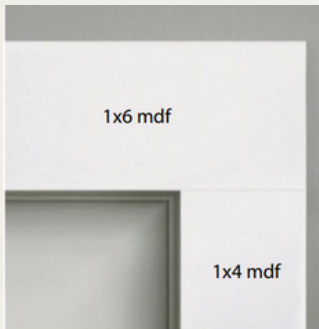
3



1. FAUCET- DELTA SAYLOR - SINGLE
2. BATHROOM LIGHTING - MARIETTA 2-LIGHT - BLACK
3. PEDESTAL SINK - SACRAMENTO - WHITE

# TRIMWORK & OTHER SELECTIONS

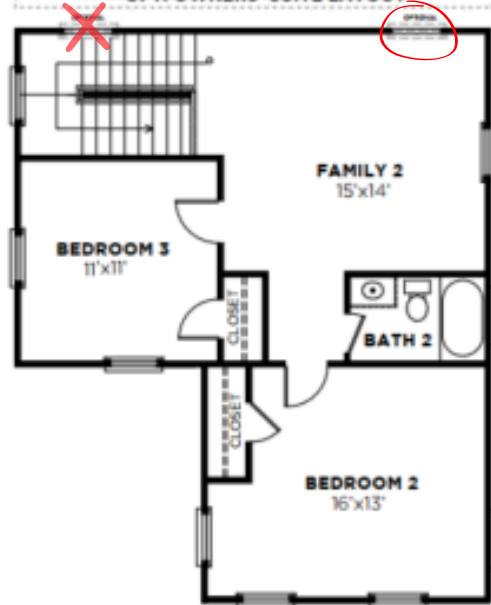
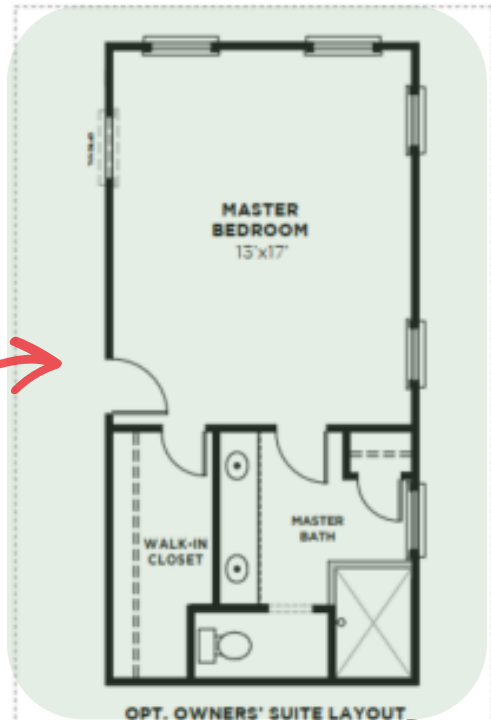
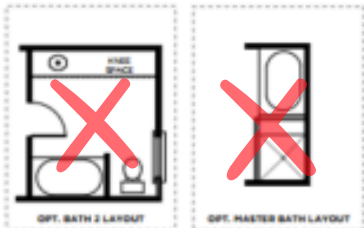
- BASEBOARDS - OPTIONAL 1X6
- WINDOW CASINGS - OPTIONAL  
1X4 LEGS, 1X6 HEADS W/ SILL



- DOOR CASINGS - STANDARD  
1X4 LEGS, 1X6 HEADS
- 5" COVE CROWN MOLDING 1ST FLOOR
- STAIRS - STAINED OAK TREADS  
W/ PAINTED RISERS

- ALT 1ST FLOOR PRIMARY  
BEDROOM LAYOUT
- GOURMET KITCHEN LAYOUT
- OPTIONAL KITCHEN ISLAND
- LAUNDRY DROP-ZONE BENCH





SECOND FLOOR 2247N-THE BANBURY  
05/06/22

reverse