

LOT 1670
525 IVY GREEN LANE

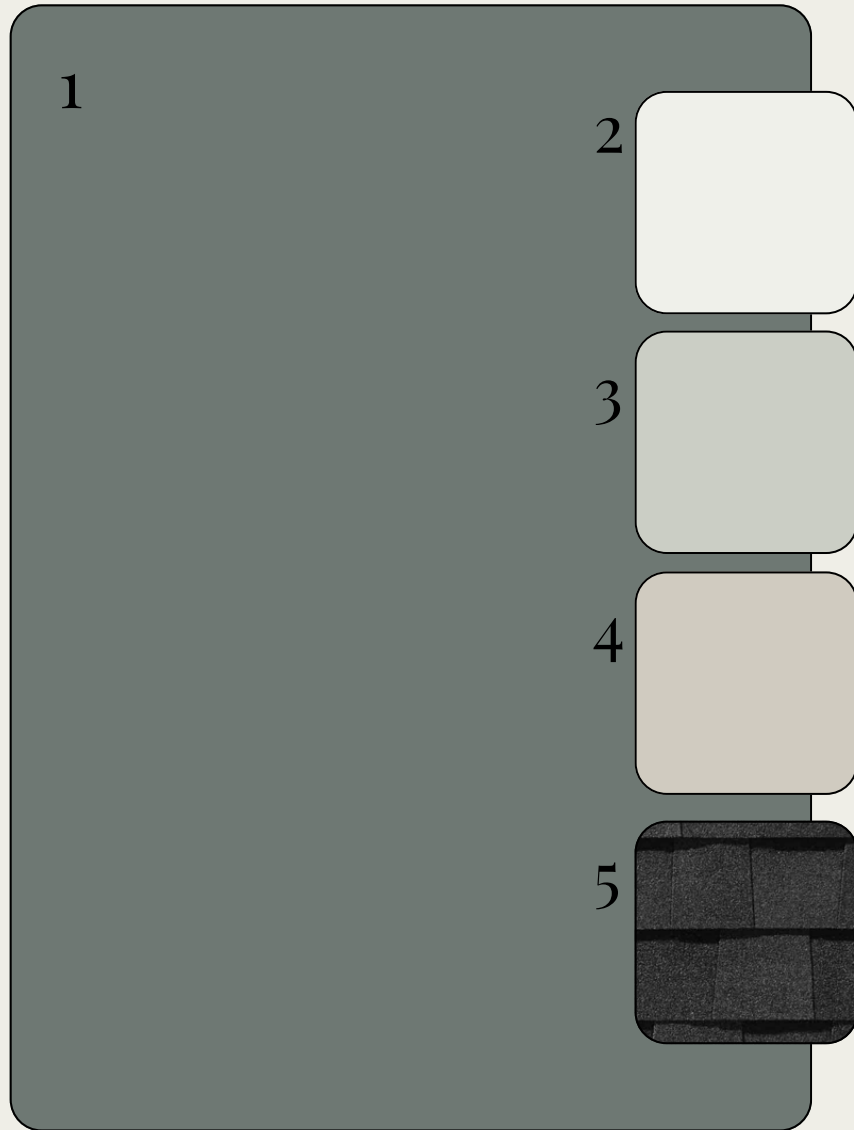
 SAUSSY BURBANK



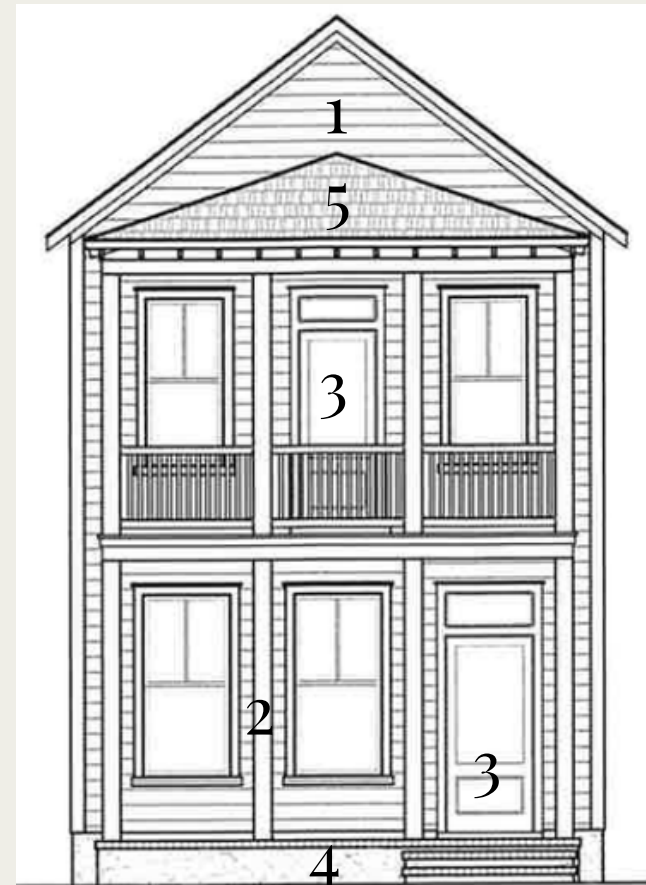
*OPTIONAL UPGRADES MAY BE SHOWN ON ARTIST'S RENDERING. SEE AGENT FOR DETAILS

GRACE-P

EXTERIOR SELECTIONS



1. SIDING - PEACOCK BLUE (DCR082)
2. TRIM - CHARLESTON WHITE (DCR100)
3. FRONT DOORS - PEARL GREY (SW0052)
4. FOUNDATION - AGREEABLE GREY (SW7029)
5. ROOF - MOIRE BLACK



IMAGES SHOWN IN DESIGN BOOK & SAMPLES WILL APPEAR DIFFERENTLY ACROSS VARIOUS SCREENS, AND WHEN INSTALLED IN YOUR HOME UNDER DIFFERENT LIGHTING CONDITIONS.

EXTERIOR HARDWARE & LIGHTING

1



2



3



4



5



1. FRONT DOOR HARDWARE - SUTTON - BLACK
2. INTERIOR DOOR HARDWARE - STRATUS KNOB - BLACK
3. REAR DOOR KEYLESS - TOUCH CENTURY - BLACK
4. FRONT & REAR PORCHES - GALENA LANTERN - COPPER
5. GARAGE DOORS - FREDRICKSBURG LANTERN - COPPER

INTERIOR SELECTIONS

1

2

3

4

1. WALL PAINT- ALABASTER
(SW7008)
2. TRIM PAINT - PURE WHITE
(SW7005)
3. FLOORING - LVP -MOHAWK -
LAKEMOOR BANKS - ELLIS
(1ST FLOOR LIVING AREAS, LAUNDRY, 2ND
FLOOR HALL)
4. CARPET -MOHAWK - LASTING
HARMONY - ISLAND TAUPE
(PRIMARY BEDROOM, BED 2 & 3)

INTERIOR LIGHTING

1



2



3



1. FAMILY ROOM & PRIMARY BEDROOM - ERA 52" LED - WHITE
2. BED 2 & 3 - LARSON FLUSH MOUNT - MATTE WHITE
3. CLOSETS, FOYER, LAUNDRY - ROUND CEILING MOUNT - WHITE

KITCHEN



1



2

3



4



5



7



6



1. FAUCET/AIRSWITCH BUTTON - DELTA TRINSIC - CHAMPAGNE BRONZE
2. STAINLESS STEEL UNDERMOUNT SINK
3. PENDANT LIGHTS - HANKS MINI PENDANTS - SATIN BRASS (X2)
4. COUNTERTOPS- QUARTZ - PEARL JASMINE
5. BACKSPLASH - RAKU 3X12 - WHITE GLOSSY
6. CABINET HARDWARE - TEMPO PULL
7. CABINETS - TIMBERLAKE BARNETT - PAINTED LINEN

APPLIANCES

1

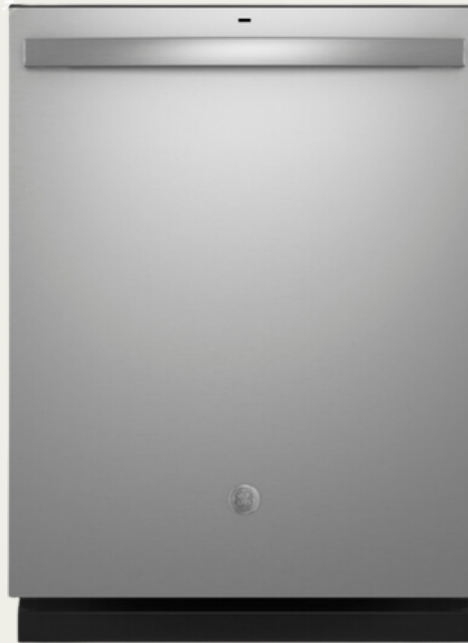


1. MICROWAVE (OVER RANGE) - GE - JVM3162RJSS - STAINLESS
2. GAS RANGE - GE - GGS500SVSS - STAINLESS STEEL
3. DISHWASHER- GE - GDT635HSRSS - STAINLESS STEEL

2



3



PRIMARY BATHROOM

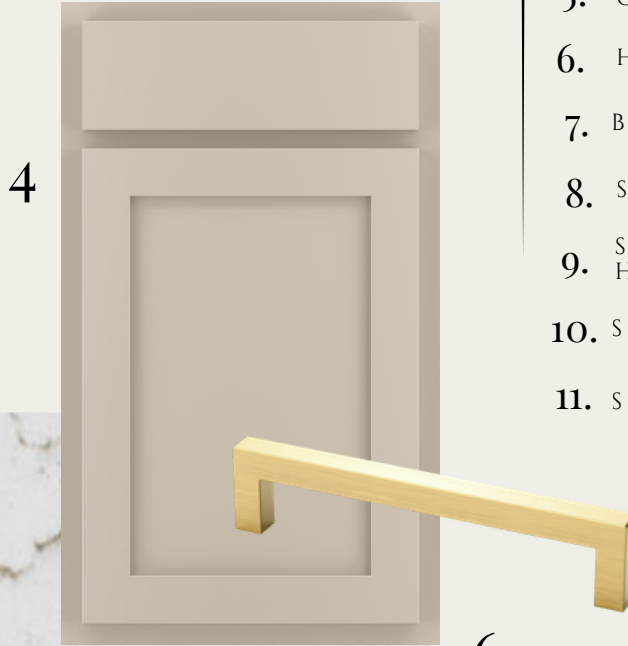


1

2



3



4

6

1. FAUCET- DELTA TRINSIC - WIDESPREAD (X2)
2. SINK-RECTANGULAR BASIN (X2)
3. BATHROOM LIGHT FIXTURE - CROFTON 2-LIGHT - BRUSHED NICKEL (X2)
4. CABINETS-TIMBERLAKE BARNETT - PAINTED OAT
5. COUNTERTOPS- QUARTZ - CARRARA BREVE
6. HARDWARE - TEMPO PULL
7. BATHROOM FLOOR- JUTE 12X24 - LINEN
8. SHOWER WALLS - CATCH 4X10 - ICE GLOSSY
9. SHOWER FLOOR TILE - IMPACT HERRINGBONE - WHITE MATTE
10. SHOWER FIXTURE - DELTA TRINSIC
11. SHOWER ENCLOSURE - FRAMELESS

5



7



8



9



10

11



BATHROOM TWO



1

3



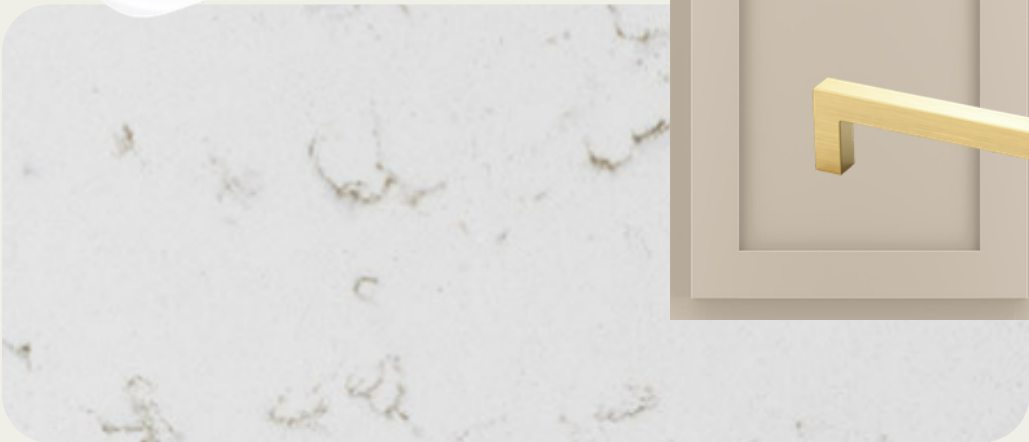
2



4



5



6



7



8



9



- 1. FAUCET- DELTA TRINSIC - CENTERSET (X1)
- 2. SINK-RECTANGULAR BASIN (X1)
- 3. BATHROOM LIGHTING - CROFTON 2-LIGHT (X1)
- 4. CABINETS - TIMBERLAKE BARNETT - PAINTED OAT
- 5. COUNTERTOPS - QUARTZ - CARRARA BREVE
- 6. HARDWARE - TEMPO PULL
- 7. BATHROOM FLOOR - JUTE 12X24 - LINEN
- 8. TUB/SHOWER FIXTURE - DELTA TRINSIC
- 9. TUB- VIKRELL TUB

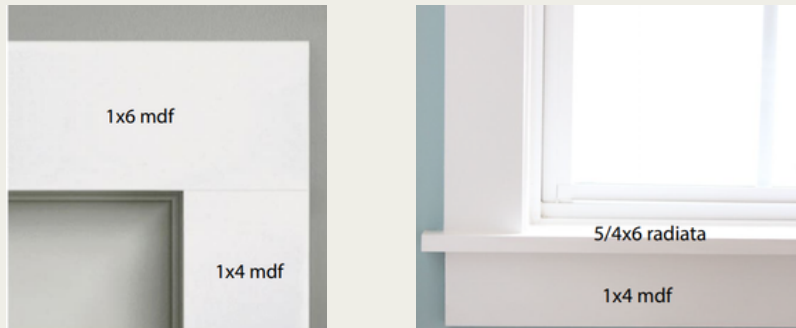
POWDER ROOM



1. FAUCET- DELTA TRINSIC - CENTERSET
2. BATHROOM LIGHTING - CROFTON 2-LIGHT (X1)
3. PEDESTAL SINK - SACRAMENTO - WHITE

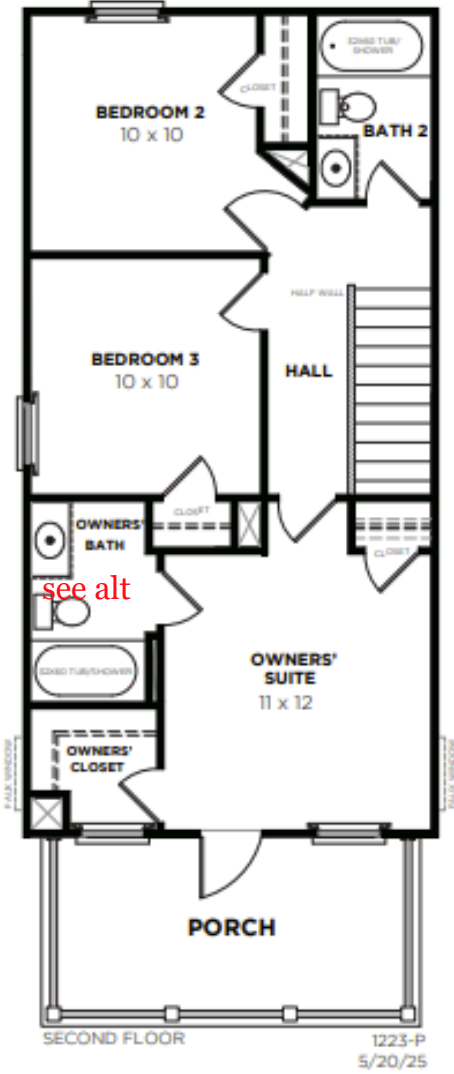
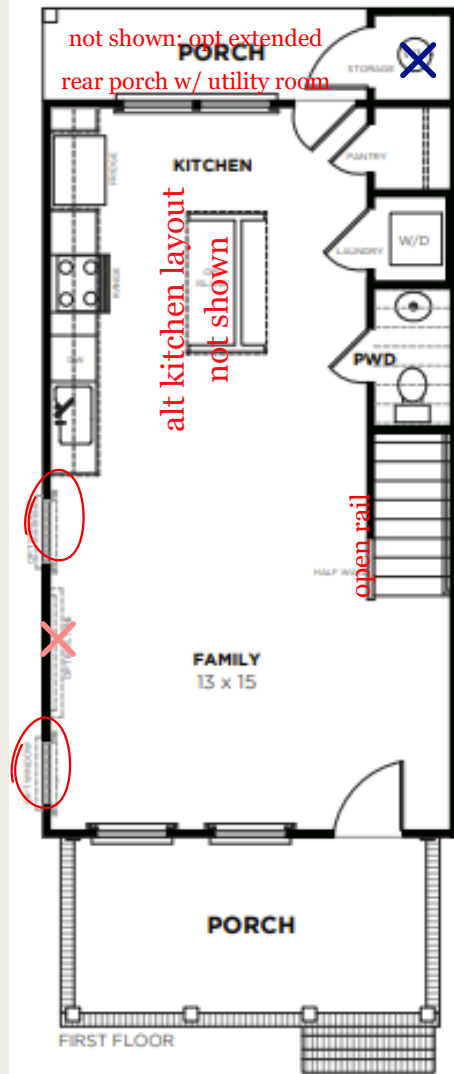
TRIMWORK & OTHER SELECTIONS

- BASEBOARDS - OPTIONAL 1X6
- WINDOW CASINGS - OPTIONAL
1X4 LEGS, 1X6 HEADS W/ SILL



- CASED OPENINGS - OPTIONAL
1X4 LEGS, 1X6 HEADS
- DOOR CASINGS - STANDARD
1X4 LEGS, 1X6 HEADS
- STAIRS - STAINED OAK TREADS
W/ PAINTED RISERS

- OPTIONAL EXTENDED REAR
PORCH W/ UTILITY ROOM
- OPTIONAL ALTERNATE
KITCHEN LAYOUT W/ SINK IN
ISLAND
- OPTIONAL PRIMARY BATH
DOUBLE VANITY
- OPTIONAL PRIMARY BATH
SHOWER TILE PAN W/ BENCH
& TILE WALLS
- OPTIONAL WINDOWS IN
FAMILY ROOM
- OPTIONAL $\frac{3}{4}$ LITE FIBERGLASS
FRONT DOORS
- SHIPLAP TRIM ON BACK OF
KITCHEN ISLAND



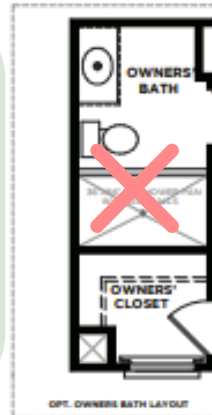
OPT. MASTER VANITY



OPT. MASTER VANITY w/ DUAL SINKS



OPT. OWNERS BATH LAYOUT



OPT. OWNERS BATH LAYOUT