

LOT 1702  
624 JUNE BERRY LN

 SAUSSY BURBANK



\*OPTIONAL UPGRADES MAY BE SHOWN ON ARTIST'S RENDERING. SEE AGENT FOR DETAILS

WANDO-N

# EXTERIOR SELECTIONS



1. SIDING - MOUNTAIN AIR (SW6224)
2. TRIM- PURE WHITE (SW7005)
3. FRONT DOOR- STAIN - SAWYER (MW429)
4. SHUTTERS - DELFT (SW9134)
5. FOUNDATION - REPOSE GREY (SW7005)
6. ROOF- MOIRE BLACK



# EXTERIOR HARDWARE & LIGHTING

1



2



3



3



4



1. FRONT DOOR HARDWARE - SUTTON - BLACK
2. INTERIOR DOOR HARDWARE - STRATUS KNOB - BLACK
3. KEYLESS ENTRY - FRONT DOOR - CONNECT CENTURY
4. FRONT DOOR, REAR PORCH, GARAGE ENTRY - VADO WALL LANTERN - BLACK (SIZES VARY)
5. GARAGE DOORS - FREDRICKSBURG 10" WALL LANTERN - BLACK

# INTERIOR SELECTIONS

1

2

3

4

1. WALL/CEILING PAINT - SNOWBOUND (SW7004)
2. TRIM PAINT - PURE WHITE (SW7005)
3. FLOORING - LVP - MOHAWK - NOTTINGHAM SHADES - FINLEY (1ST FLOOR LIVING AREAS, LOFT/HALL, BED 2 & CLOSET)
4. CARPET - MOHAWK - LASTING HARMONY - ISLAND TAUPE (MASTER BED, BED 3, 4, 5 & CLOSETS)

# INTERIOR LIGHTING

1



2



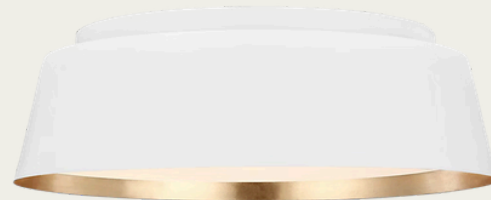
3



4



5

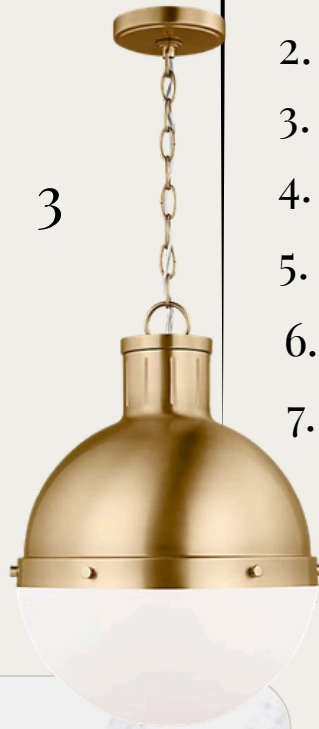


6

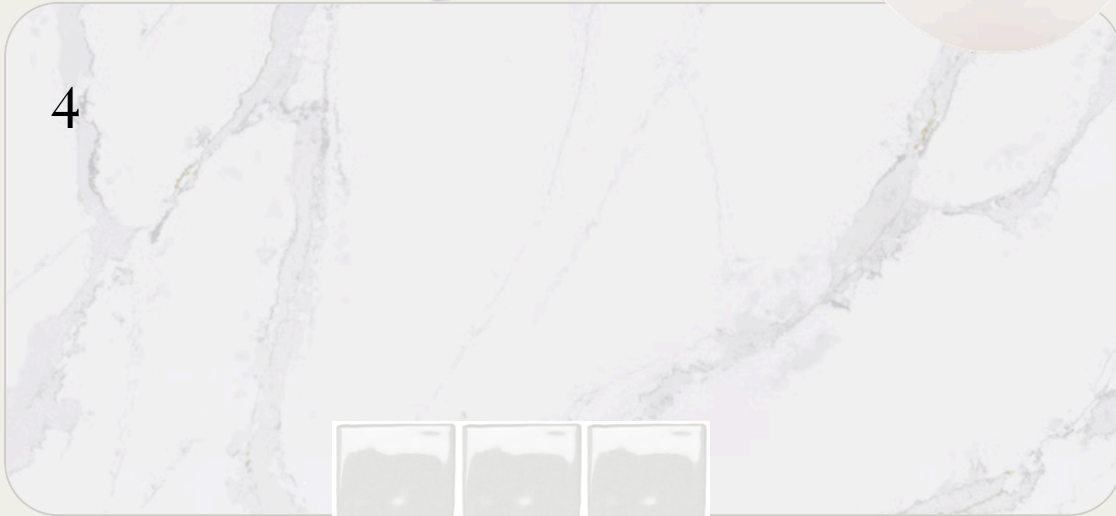


1. FAMILY ROOM & MASTER BED - AVILA 54" LED FAN - SATIN BRASS/WHITE
2. FOYER - DIANNA SMALL LANTERN - SATIN BRASS
3. DINING ROOM - THURLO LARGE HANGING SHADE - SATIN BRASS
4. STUDY - LARSON MEDIUM FLUSH MOUNT - MATTE WHITE
5. BEDS 2, 3 & 4 - ASHER MEDIUM FLUSH MOUNT - WHITE
6. LOFT & BED 5 - AVILA COASTAL 54" LED FAN - WHITE

# KITCHEN



1. FAUCET/AIRSWITCH BUTTON - DELTA MONROVIA - CHAMPAGNE BRONZE
2. FARM SINK - KOHLER WHITEHAVEN CAST IRON
3. PENDANT LIGHTS - HANKS MEDIUM PENDANTS - SATIN BRASS (X2)
4. COUNTERTOPS- QUARTZ - CALACATTA GOLD
5. BACKSPLASH - PASSION 3X8 - BLANCO GLOSSY (EXTENDED TO CEILING AT HOOD)
6. CABINETS - TIMBERLAKE SONOMA - HARBOR PAINTED PERIMETER / SAGE PAINTED ISLAND
7. CABINET HARDWARE - TEMPO PULL



# APPLIANCES

1



1. HOOD - TIMBERLAKE CABINET WOOD  
HOOD - HARBOR PAINTED FINISH
2. COOKTOP 36" - GE - JGP3036SLSS  
- STAINLESS STEEL
3. COMBO OVEN - GE - JT3800SHSS  
- STAINLESS STEEL
4. DISHWASHER- GE - GDT670SYVFS  
- STAINLESS STEEL

2



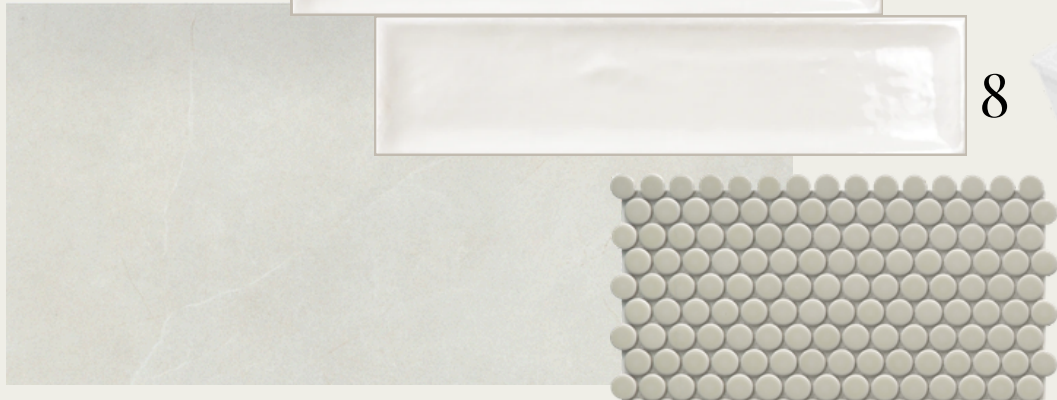
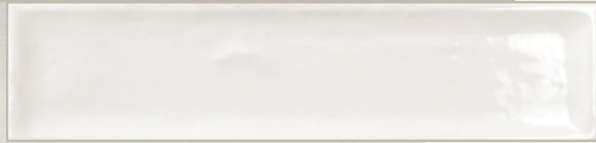
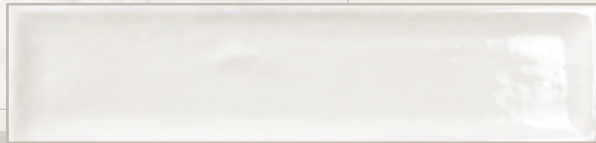
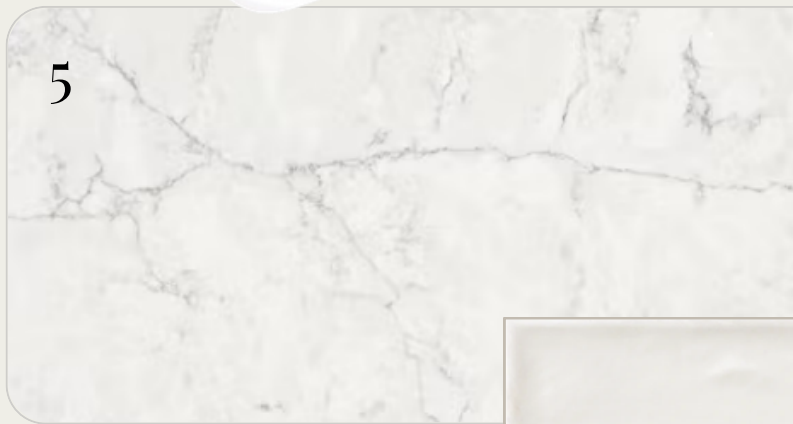
3



4



# PRIMARY BATHROOM



1. FAUCET- DELTA KAYRA - CHAMPAGNE BRONZE - WIDESPREAD (X2)
2. SINK-RECTANGULAR BASIN (X2)
3. BATHROOM LIGHTING - NUBE 3-LIGHT (X2) - SATIN BRASS
4. CABINETS-TIMBERLAKE SONOMA - MAPLE LATTE
5. COUNTERTOPS- QUARTZ - PEARL JASMINE
6. HARDWARE- TEMPO PULL
7. BATHROOM FLOOR - SOLARA 12X24 - FIRENZA (HERRINGBONE PATTERN)
8. SHOWER WALLS - RAKU 3X12 - WHITE GLOSSY
9. SHOWER FLOOR TILE - SAVVY PENNIES - OAT
10. SHOWER & TUB FIXTURE - DELTA KAYRA
11. SHOWER ENCLOSURE - FRAMELESS
12. FREESTANDING TUB - KOHLER STARGAZE

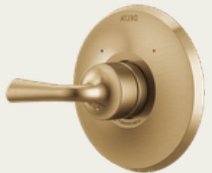
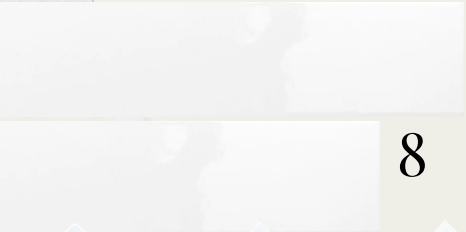


layout may differ by plan

12

# BATHROOM TWO

- 1. FAUCET- DELTA KAYRA - CENTERSET (X2)
- 2. SINK-RECTANGULAR BASIN (X2)
- 3. BATHROOM LIGHTING - EMILE 3-LIGHT - SATIN BRASS
- 4. CABINETS - TIMBERLAKE SONOMA - HARBOR PAINTED
- 5. COUNTERTOPS- QUARTZ - CARRARA BREVE
- 6. HARDWARE - TEMPO PULL
- 7. BATHROOM FLOOR TILE - NOBLEZA 12X24 - LUGO MATTE
- 8. SHOWER WALL TILE - CATCH 4X10 - ICE GLOSSY
- 9. SHOWER FLOOR TILE - IMPACT HERRINGBONE - WHITE
- 10. SHOWER FIXTURE - DELTA KAYRA
- 11. SHOWER ENCLOSURE - FRAMELESS

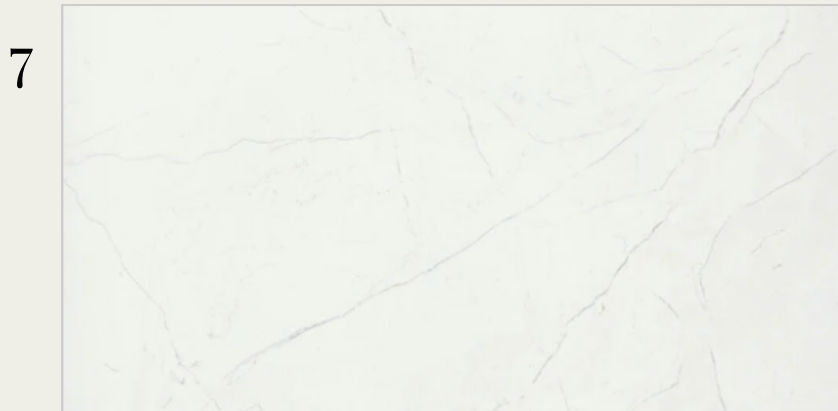
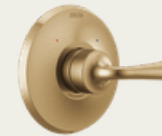
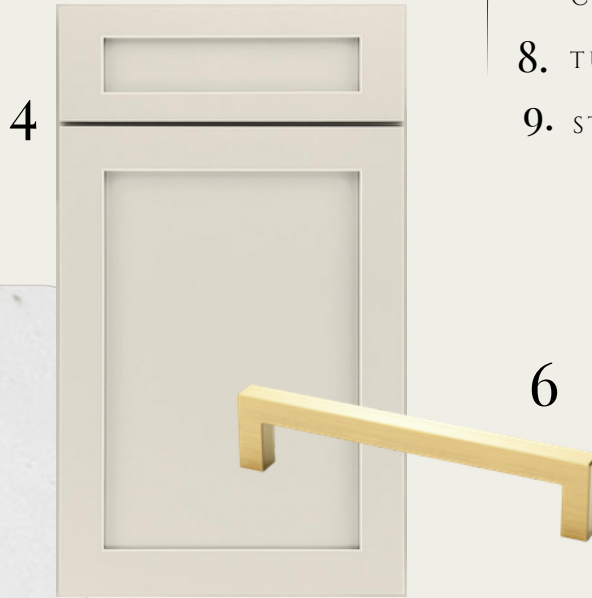


layout may differ by plan

# BATHROOM THREE



1. FAUCET- DELTA KAYRA - CENTERSET (X2)
2. SINK-RECTANGULAR BASIN (X2)
3. BATHROOM LIGHTING - EMILE 3-LIGHT - SATIN BRASS
4. CABINETS - TIMBERLAKE SONOMA - HARBOR PAINTED
5. COUNTERTOPS- QUARTZ - CARRARA BREVE
6. HARDWARE - TEMPO PULL
7. BATHROOM FLOOR TILE - SOLARA 12X24 - CABRIO
8. TUB/SHOWER FIXTURE - DELTA KAYRA
9. STERLING MEDLEY FG TUB/WALL SET



9

# BATHROOM FOUR

1



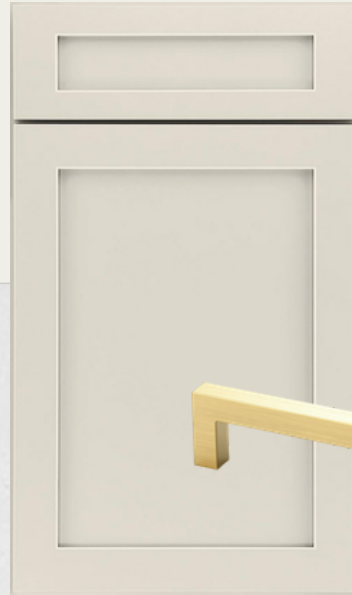
3



2



4



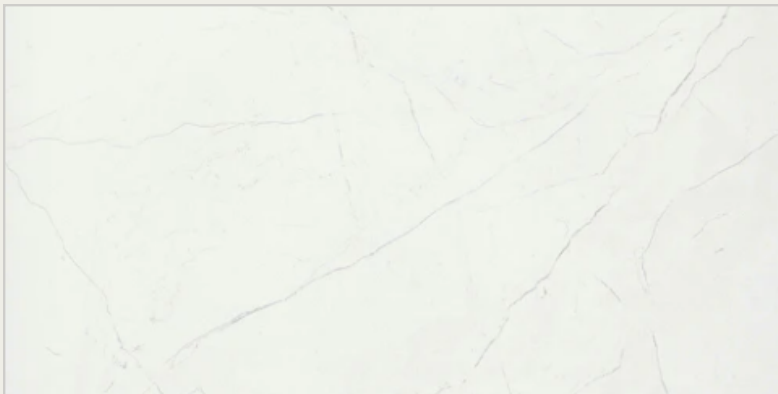
5



6



7



8



9



1. FAUCET- DELTA KAYRA - SINGLE
2. SINK-RECTANGULAR BASIN
3. BATHROOM LIGHTING - EMILE 2-LIGHT - SATIN BRASS
4. CABINETS - TIMBERLAKE SONOMA - HARBOR PAINTED
5. COUNTERTOPS- QUARTZ - CARRARA BREVE
6. HARDWARE - TEMPO PULL
7. BATHROOM FLOOR TILE - SOLARA 12X24 - CABRIO
8. TUB/SHOWER FIXTURE - DELTA KAYRA
9. STERLING MEDLEY FG TUB/WALL SET

# POWDER ROOM

1



2

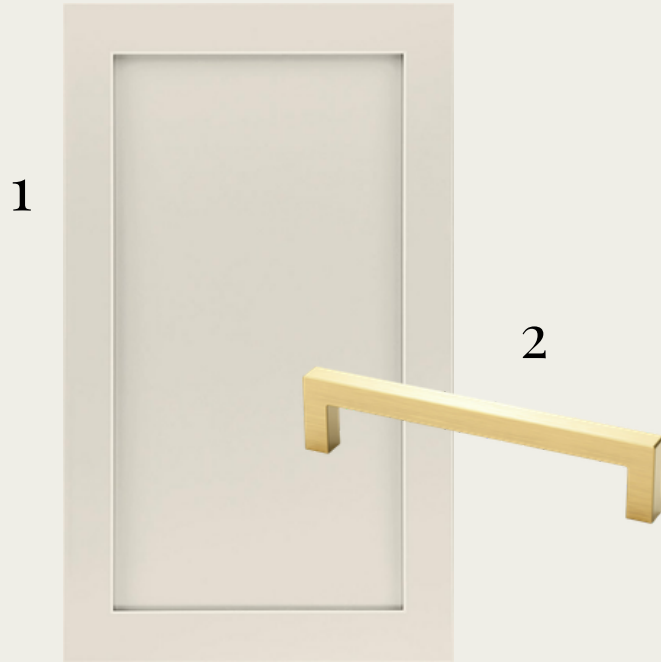


3



1. FAUCET- DELTA KAYRA - CENTERSET
2. BATHROOM LIGHTING - NUBE 2-LIGHT - SATIN BRASS
3. PEDESTAL SINK - KOHLER ARCHER

# LAUNDRY ROOM

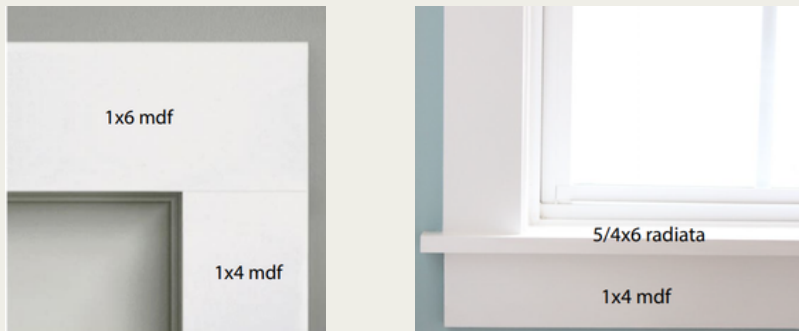


1. WALL CABINETS - TIMBERLAKE  
SONOMA - HARBOR PAINTED
2. CABINET HARDWARE - TEMPO PULL
3. FLOOR TILE - NOSTALGIA 18X18 -  
LEGEND



# TRIMWORK & OTHER SELECTIONS

- BASEBOARDS - 1X6
- WINDOW CASINGS - 1X4 LEGS, 1X6 HEADS W/ SILL



- DOOR CASINGS - 1X4 LEGS, 1X6 HEADS
- FAMILY ROOM OPTIONAL COFFERED CEILING
- STAIRS - STAINED OAK TREADS W/ PAINTED RISERS

- FIR WOOD FRONT DOOR W/  $\frac{3}{4}$  GLASS
- OPTIONAL SLIDING GLASS REAR DOOR
- OPT. FREESTANDING TUB IN PRIMARY BATH
- OPT. 2ND SINK & SHOWER ILO TUB IN BATH 2
- OPTIONAL WINDOWS ADDED IN FAMILY ROOM, PRIMARY BEDROOM, BED 2, BED 3, & BED 4
- OPTIONAL FRENCH DOORS ON STUDY

