

LOT 1608
743 BLUEWAY AVE

 SAUSSY BURBANK

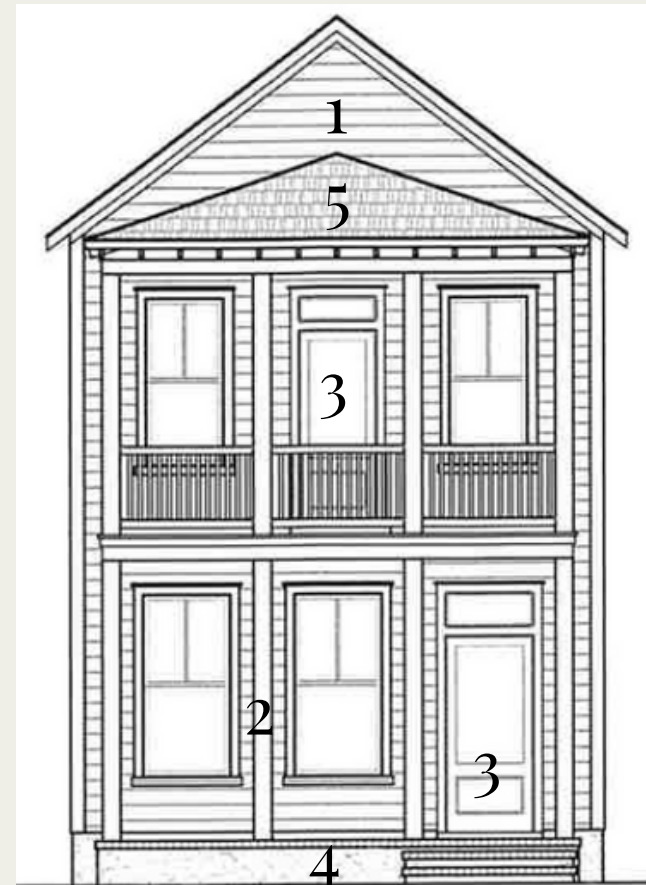
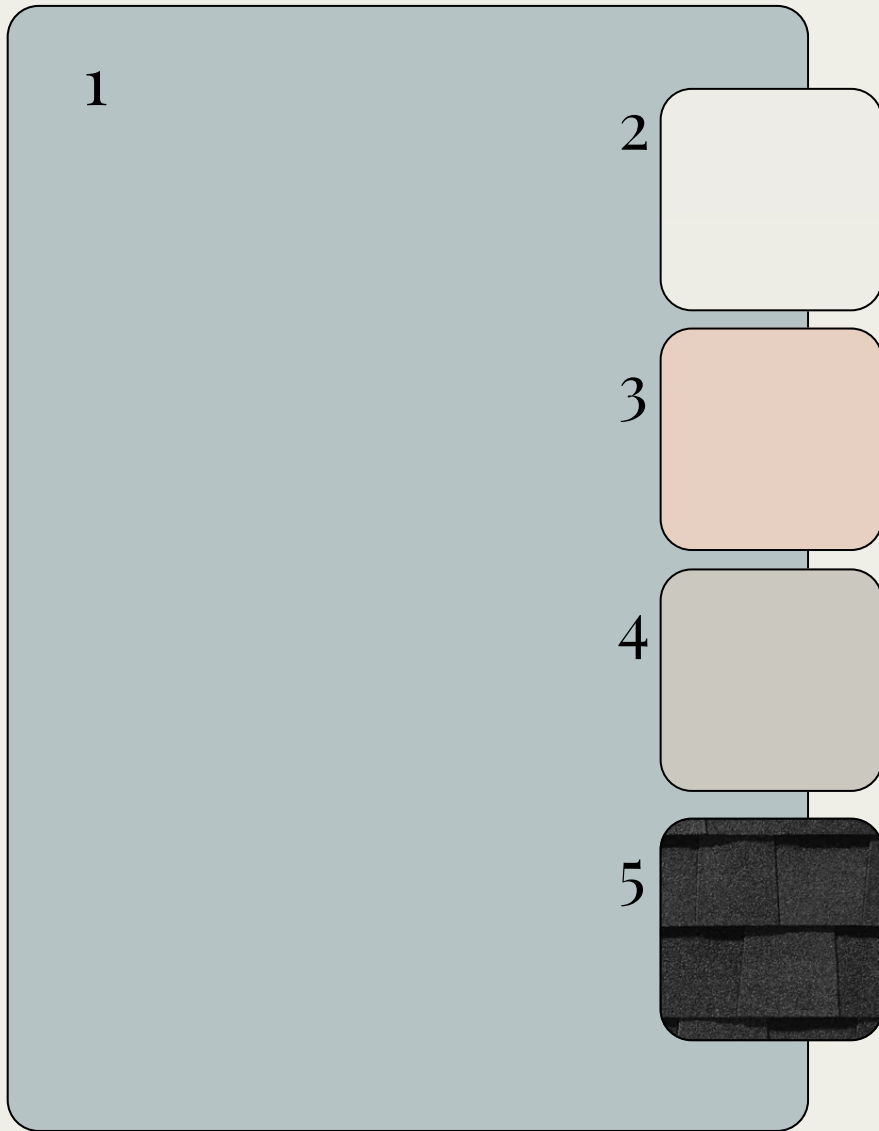


*OPTIONAL UPGRADES MAY BE SHOWN ON ARTIST'S RENDERING. SEE AGENT FOR DETAILS

ROWAN-P

EXTERIOR SELECTIONS

1. SIDING - NIEBLA AZUL (SW9137)
2. TRIM - PURE WHITE (SW7005)
3. FRONT DOORS - ROMANCE (SW6323)
4. FOUNDATION - REPOSE GREY (SW7015)
5. ROOF - MOIRE BLACK



IMAGES SHOWN IN DESIGN BOOK & SAMPLES WILL APPEAR DIFFERENTLY ACROSS VARIOUS SCREENS, AND WHEN INSTALLED IN YOUR HOME UNDER DIFFERENT LIGHTING CONDITIONS.

EXTERIOR HARDWARE & LIGHTING

1



2



3



4

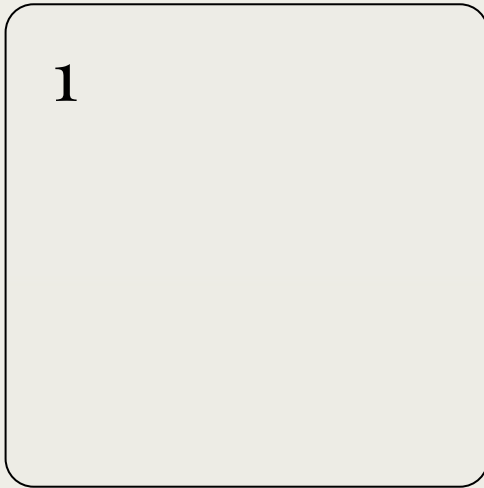


5



1. FRONT DOOR HARDWARE - SUTTON - SATIN NICKEL
2. INTERIOR DOOR HARDWARE - STRATUS KNOB - SATIN NICKEL
3. REAR DOOR KEYLESS - TOUCH CENTURY - SATIN NICKEL
4. FRONT & REAR PORCHES - WARREN SMALL LANTERN - BLACK
5. GARAGE DOOR - BARN LIGHT LARGE - BLACK

INTERIOR SELECTIONS



1. WALL & TRIM PAINT- PURE WHITE (SW7005)
2. FLOORING - LVP -MOHAWK - LAKEMOOR BANKS - ELLIS (1ST FLOOR LIVING AREAS, LAUNDRY, 2ND FLOOR HALL)
3. CARPET -MOHAWK - LASTING HARMONY - ISLAND TAUPE (PRIMARY BEDROOM, BED 2 & 3)



INTERIOR LIGHTING



1. FAMILY ROOM & PRIMARY BEDROOM - ERA 52" LED
2. DINING ROOM - THURLO MEDIUM HANGING SHADE
3. CLOSETS, FOYER, LAUNDRY - ROUND CEILING MOUNT
4. BED 2 & 3 - RHETT FLUSH MOUNT - BRUSHED NICKEL

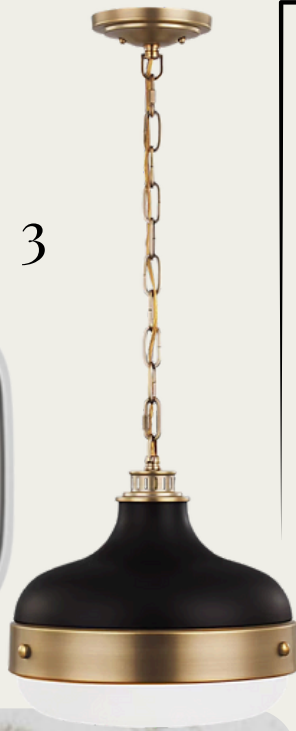
KITCHEN



1

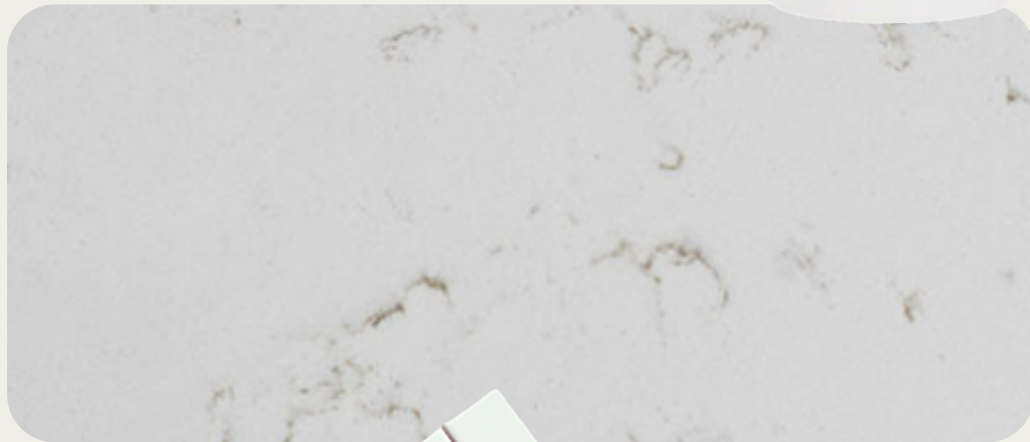


2



3

1. FAUCET/AIRSWITCH BUTTON - DELTA MONROVIA - CHAMPAGNE BRONZE
2. STAINLESS STEEL UNDERMOUNT SINK
3. PENDANT LIGHTS - CADENCE 2-LIGHT PENDANTS = ANTIQUE BRASS (X2)
4. COUNTERTOPS- QUARTZ - CARRARA BREVE
5. BACKSPLASH - COGNITO HERRINGBONE - ICE GLOSSY
6. CABINET HARDWARE - TEMPO PULL
7. CABINETS - TIMBERLAKE BARNETT - PAINTED LINEN (PERIMETER) & MAPLE LATTE (ISLAND)



4

5



6

7



APPLIANCES

1

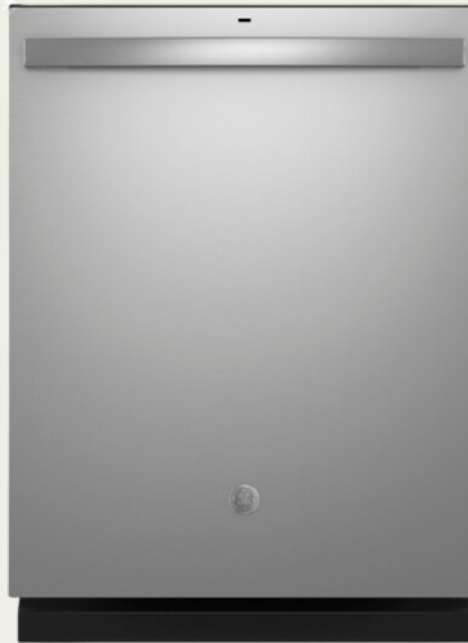


1. MICROWAVE (OVER RANGE) - GE - JVM3162RJSS - STAINLESS
2. GAS RANGE - GE - GGS500SVSS - STAINLESS STEEL
3. DISHWASHER - GE - GDT635HSRSS - STAINLESS STEEL

2



3



PRIMARY BATHROOM



1



3



2



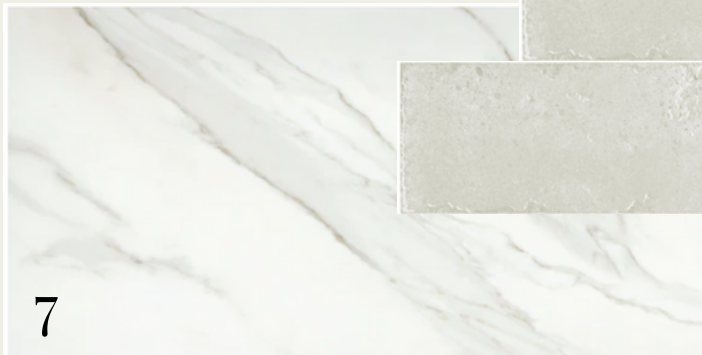
4



5



6



7



8



9

1. FAUCET- DELTA SAYLOR - WIDESPREAD (X2)
2. SINK-RECTANGULAR BASIN (X2)
3. BATHROOM LIGHT FIXTURE - LANDO 2-LIGHT - SATIN BRASS (X2)
4. CABINETS-TIMBERLAKE BARNETT - PAINTED LINEN
5. COUNTERTOPS- QUARTZ - CARRARA BREVE
6. HARDWARE- TEMPO PULL
7. BATHROOM FLOOR - NOBLEZA 12X24 - LUGO MATTE
8. SHOWER WALLS - INHALE 4X12 - BLANCO
9. SHOWER FLOOR - SAVVY 2" HEX - WHITE
10. SHOWER FIXTURE - DELTA SAYLOR
11. SHOWER ENCLOSURE - FRAMELESS



10



11



BATHROOM TWO



1



3



2



4

6



5



7



8



9

- 1. FAUCET- DELTA SAYLOR - SINGLE (X1)
- 2. SINK-RECTANGULAR BASIN (X1)
- 3. BATHROOM LIGHTING - LANDO 2-LIGHT (X1)
- 4. CABINETS - TIMBERLAKE BARNETT - PAINTED LINEN
- 5. COUNTERTOPS - QUARTZ - CARRARA BREVE
- 6. HARDWARE - TEMPO PULL
- 7. BATHROOM FLOOR - NOBLEZA 12X24 - LUGO MATTE
- 8. TUB/SHOWER FIXTURE - DELTA SAYLOR
- 9. TUB- VIKRELL TUB

POWDER ROOM

1



2



3



1. FAUCET- DELTA SAYLOR - SINGLE
2. BATHROOM LIGHTING - CAFE 2-LIGHT (XI)
3. PEDESTAL SINK - SACRAMENTO - WHITE

TRIMWORK & OTHER SELECTIONS

- BASEBOARDS - OPTIONAL 1X6
- WINDOW CASINGS - OPTIONAL
1X4 LEGS, 1X6 HEADS W/ SILL



- CASED OPENINGS - OPTIONAL
1X4 LEGS, 1X6 HEADS
- DOOR CASINGS - STANDARD
1X4 LEGS, 1X6 HEADS
- STAIRS - STAINED OAK TREADS
W/ PAINTED RISERS

